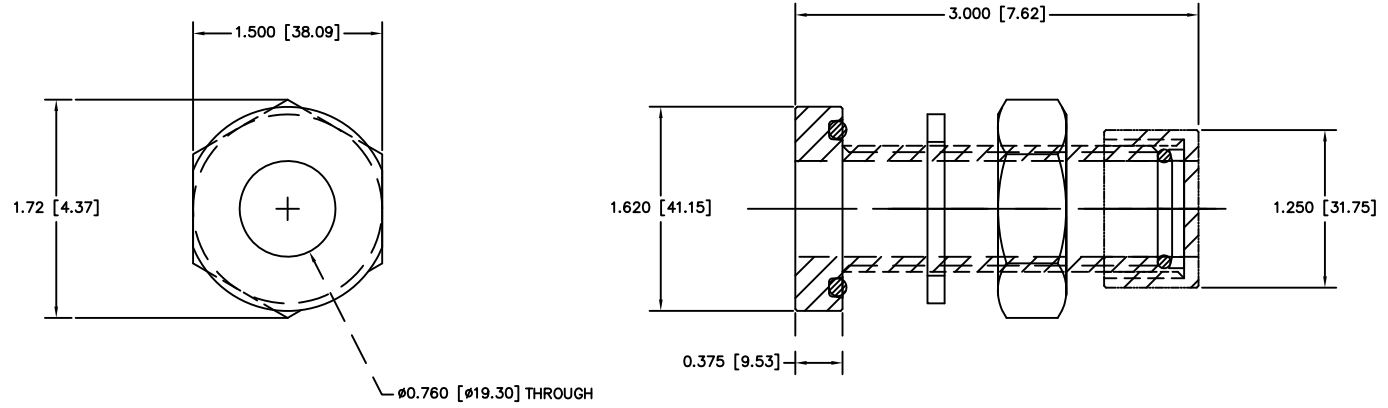


NOTES: UNLESS OTHERWISE SPECIFIED

1. INTERPRET DIMENSIONS AND TOLERANCING IAW ANSI Y14.5M - 1982.
2. BREAK SHARP EDGES .002-.015.
3. INTERPRET ABBREVIATIONS IAW MIL-STD-12.
4. ELECTROPOLISH AFTER MACHINING. DO NOT DAMAGE THREADS.

ZONE		REV	DESCRIPTION	REVISION	DATE	APPROVED
-		-	INITIAL RELEASE		050413	



-1		00000446	1" BASEPLATE TO 3/4" OD TUBE FEEDTHRU ASSY			1
QUANTITY PER ASSEMBLY	CAGE CODE	PART OR IDENTIFYING NO.	NOMENCLATURE OR DESCRIPTION		MATERIAL SPECIFICATION	ZONE
			PARTS LIST			ITEM NO
		DRAWN J. MILLER 06/04/13		MATERIALS SCIENCE, INC. Vacuum and Thin Film Technology www.ms-science.com		
		UNLESS OTHERWISE SPECIFIED DIMENSIONS ARE IN INCHES TOLERANCES ARE: DECIMALS .005 .010 .015 FRACTIONS 1/32 1/16 3/32 HIDDEN SURFACES UNLESS OTHERWISE SPECIFIED USE		THIS DRAWING CONTAINS PROPRIETARY INFORMATION AND ANY REPRODUCTION, DISCLOSURE OR USE OF THIS DRAWING WITHOUT WRITTEN PERMISSION FROM MATERIALS SCIENCE, INC. IS EXPRESSLY PROHIBITED.		
NEXT ASSEMBLY		USED ON		SIZE D DATE CODE 00000446 REV - SCALE 1/1 IN. SHEET 1 OF 1		
APPLICATION		DO NOT SCALE DRAWING				

00000446