

- NOTES: UNLESS OTHERWISE SPECIFIED
- INTERPRET DRAWING IAW THE GLOBAL PROFESSIONAL PUBLICATIONS "DRAWING REQUIREMENTS MANUAL", EIGHTH EDITION.
  - INTERPRET DIMENSIONS AND TOLERANCES IAW ANSI Y14.5M - 1982.
  - INTERPRET ABBREVIATIONS IAW MIL-STD-12.

**WARNING:**  
WATER FITTINGS HAVE A CLEAR ID OF .375 INCHES. USING A SLEEVE OR SIMILAR DEVICE INSIDE THE WATER HOSE MAY CAUSE FLUID RESTRICTIONS AND INTERFERENCE WITH THE NORMAL OPERATION OF THE CATHODE AND THEREFORE IS NOT RECOMMENDED.

**WARNING:**  
WATER CHANNELS ARE SYMMETRICAL THROUGHOUT. ORIENTATION OF WATER INLET OR OUTLET IS NOT CRITICAL.

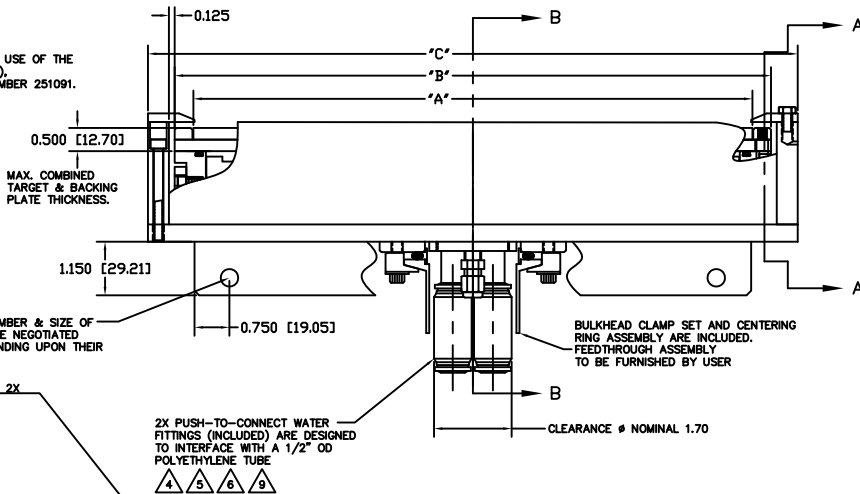
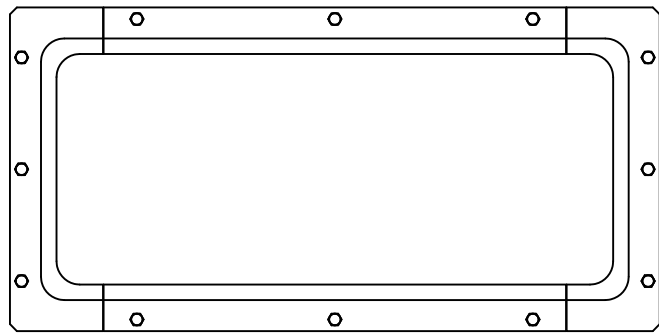
**WARNING:**  
MINIMUM HOSE LENGTH OF 60" IS REQUIRED TO ENSURE RESISTIVITY RELATIVE TO ELECTRICAL GROUND WITHIN 50 KILO OHMS. TEST CABLE WITH AN OHM METER OR OTHER SUITABLE DEVICE BEFORE USE.

**MULTI-CONTACT-USA:**  
5560 SKYLANE BLVD.  
SANTA ROSA, CA 95403  
VOICE: (707) 575-7575  
FAX: (707) 575-7373  
INTERNET: WWW.MULTI-CONTACT-USA.COM

FOR PROPER INSTALLATION, OPERATION, AND USE OF THE SUNSOURCE PLANAR MAGNETRON CATHODE(S), SEE MATERIALS SCIENCE, INC. DOCUMENT NUMBER 251091.

P/N 88040-08 IS AVAILABLE FROM:  
**ALPHA TECHNOLOGIES**  
320 PREMIER COURT, SUITE 222  
FRANKLIN, TN 37067  
TEL: (615) 771-6650  
HTTP://WWW.ALPHAFITTINGS.COM

ALL FASTENERS ARE METRIC.



Ø .375" TYPICAL. NUMBER & SIZE OF THROUGH HOLES TO BE NEGOTIATED WITH CUSTOMER DEPENDING UPON THEIR REQUIREMENTS.

MOUNTING BARS 2X

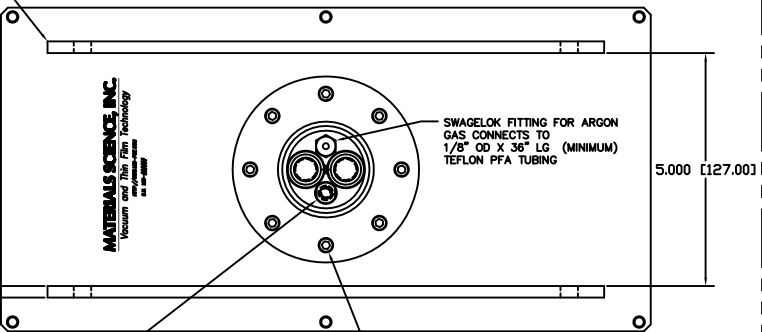
2X PUSH-TO-CONNECT WATER FITTINGS (INCLUDED) ARE DESIGNED TO INTERFACE WITH A 1/2" OD POLYETHYLENE TUBE

4 5 6 9

TARGET LENGTH	"A" DIMENSION	"B" DIMENSION	"C" DIMENSION
8	8.000 [203,2]	8.80 [223,5]	9.95 [252,7]
10	10.000 [254,0]	10.80 [274,3]	11.95 [303,5]
12	12.000 [304,8]	12.80 [325,1]	14.95 [379,7]
15	15.000 [381,0]	15.80 [401,3]	16.95 [430,5]
20	20.000 [508,0]	20.80 [428,3]	21.95 [557,5]

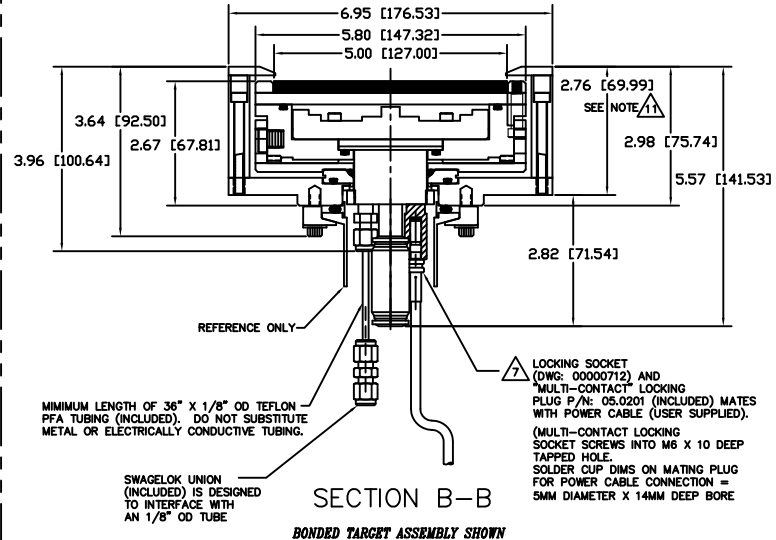
- NOTES:
- TARGET DIMENSIONS NOTED IN TABLE ARE FOR COMMON SIZES.
  - OTHER TARGET LENGTHS CAN BE ACCOMMODATED.
  - LINEAR DIMENSIONS IN TABLE SCALE EXACTLY.

**WARNING:**  
ADD .100 [2.54] WHEN CLAMPED TARGETS ARE USED. A TALLER SET OF SIDE ANODE/GROUND SHIELDS ARE REQUIRED TO MAINTAIN THE PROPER DARK SPACE GAP WHEN CLAMPED TARGETS ARE USED. BONDED AND DIRECTLY WATER COOLED TARGETS USE THE STANDARD SIDE SHIELDS SHOWN AND DIMENSIONED.



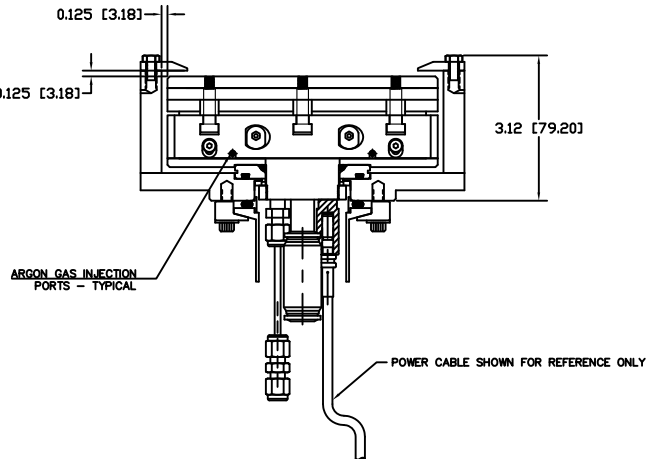
(MULTI-CONTACT LOCKING SOCKET SCREWS INTO M6 X 10 DEEP TAPPED HOLE. SOLDER CUP DIMS ON MATING PLUG FOR POWER CABLE CONNECTION = 5mm DIAMETER X 14mm DEEP BORE

6X .M6-1.0 FASTENERS ON A Ø3.250 BOLT CIRCLE. (DESIGNED TO INTERFACE WITH A STANDARD KF-50 BULKHEAD FLANGE)



LOCKING SOCKET (DWG: 00000712) AND "MULTI-CONTACT" LOCKING PLUG P/N: 05.0201 (INCLUDED) MATES WITH POWER CABLE (USER SUPPLIED). (MULTI-CONTACT LOCKING SOCKET SCREWS INTO M6 X 10 DEEP TAPPED HOLE. SOLDER CUP DIMS ON MATING PLUG FOR POWER CABLE CONNECTION = 5MM DIAMETER X 14MM DEEP BORE

SWAGelok UNION (INCLUDED) IS DESIGNED TO INTERFACE WITH AN 1/8" OD TUBE



ARGON GAS INJECTION PORTS - TYPICAL

POWER CABLE SHOWN FOR REFERENCE ONLY

## SECTION A-A INSTALLATION CONTROL DRAWING

QUANTITY FOR ASSEMBLY	CAGE CODE	PART OR IDENTIFYING NO.	NOMENCLATURE OR DESCRIPTION	MATERIAL SPECIFICATION	ZONE	ITEM NO
			PARTS LIST			
			DATE: J. MILLER 09/04/18			
			MATERIALS SCIENCE INC. Vacuum and Thin Film Technology			
			SUNSOURCE, 5" WIDE INTERNAL, KAMLOK STYLE, ICD			
			DATE: E	00000961		
			SCALE: 1/1			
			APPLICATION: DO NOT SCALE DRAWING			