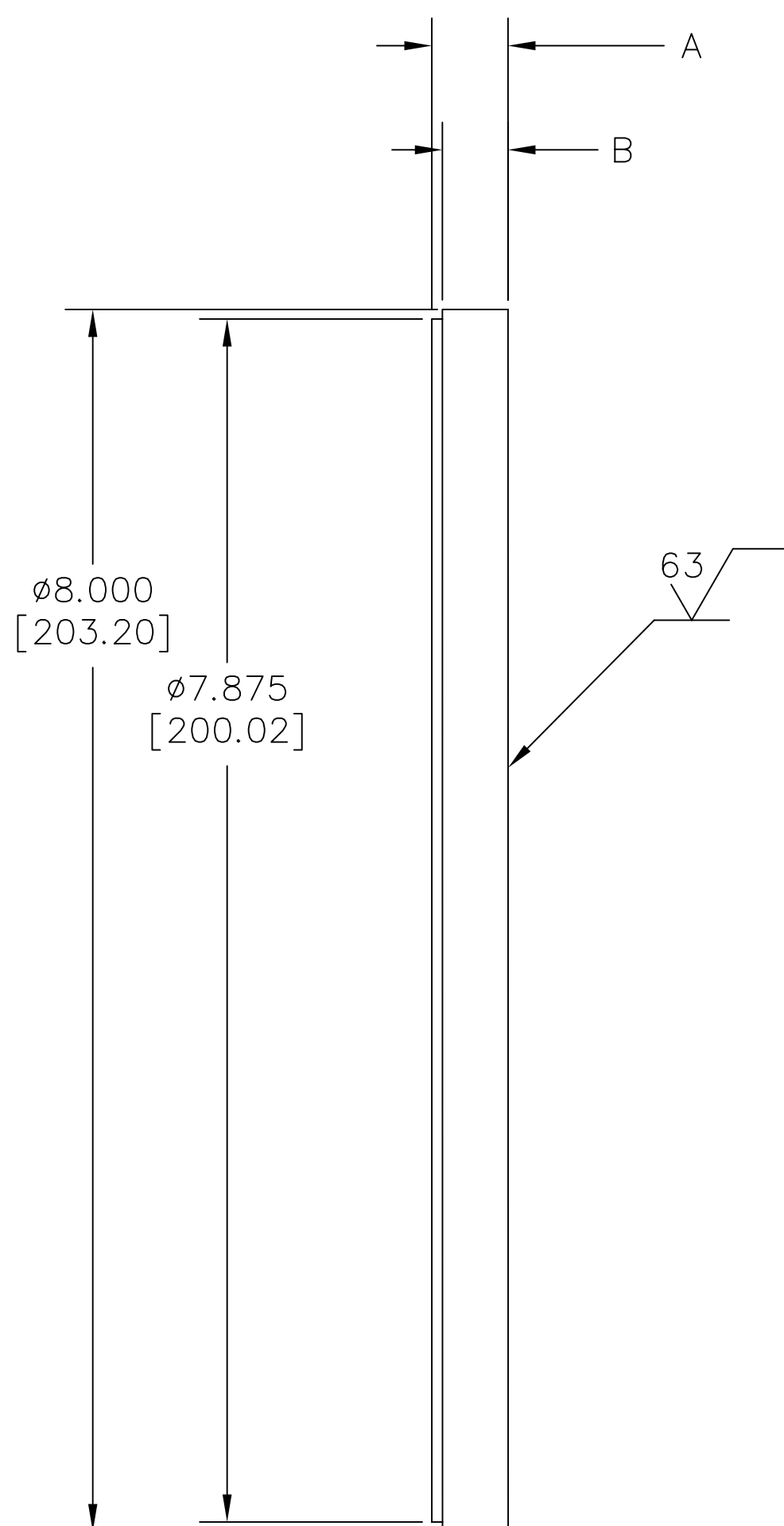


NOTES: UNLESS OTHERWISE SPECIFIED

1. INTERPRET DIMENSIONS AND TOLERANCING IAW ANSI Y14.5M - 1982.
2. BREAK SHARP EDGES .002--.015.
3. INTERPRET ABBREVIATIONS IAW MIL-STD-12.
4. DIMENSIONS IN BRACKETS "[ ]" DENOTE REFERENCE DIMENSIONS IN MILLIMETERS.
5. USE WITH P/N 00000121 TARGET CLAMP
6. FOR FURTHER FABRICATION REQUIREMENTS, SEE MATERIALS SCIENCE, INC. SPECIFICATION NO. 10000000.

| REVISION |     |                 |        |
|----------|-----|-----------------|--------|
| ZONE     | REV | DESCRIPTION     | DATE   |
|          | -   | INITIAL RELEASE | 980212 |



| DASH NO | DIM A         | DIM B         |
|---------|---------------|---------------|
| -1      | .625 [15.875] | .525 [13.335] |
| -2      | .500 [12.700] | .400 [10.160] |
| -3      | .375 [9.525]  | .275 [6.985]  |

| QUANTITY PER ASSEMBLY | CAGE CODE | PART OR IDENTIFYING NO. | NOMENCLATURE OR DESCRIPTION                  | MATERIAL SPECIFICATION | ZONE | ITEM NO |
|-----------------------|-----------|-------------------------|--|------------------------|------|---------|
|                       |           | 00000149-4              | TARGET, 8 INCH DIAMETER, DIRECT WATER COOLED |                        |      | 4       |
|                       |           | 00000149-3              | TARGET, 8 INCH DIAMETER, DIRECT WATER COOLED |                        |      | 3       |
|                       |           | 00000149-2              | TARGET, 8 INCH DIAMETER, DIRECT WATER COOLED |                        |      | 2       |
|                       |           | 00000149-1              | TARGET, 8 INCH DIAMETER, DIRECT WATER COOLED |                        |      | 1       |

|  |         |  |                         |
|--|---------|--|-------------------------|
| DRAWN <b>C. CERVANTES</b> 98/02/09   |         | <b>MATERIALS SCIENCE, INC.</b><br>Vacuum and Thin Film Technology<br>1662 Los Altos Road, San Diego, CA 92109  |                         |
| APPROVAL - -   |         | TARGET, DIRECT WATER COOLED, 8 INCH DIAMETER   |                         |
| UNLESS OTHERWISE SPECIFIED DIMENSIONS ARE IN INCHES TOLERANCES ARE:<br>DECIMALS .X ± .030 .XX ± .010 .XXX ± .005<br>ANGLES ± 0°30' |         | THIS DRAWING CONTAINS PROPRIETARY INFORMATION AND ANY REPRODUCTION, DISCLOSURE OR USE OF THIS DRAWING WITHOUT WRITTEN PERMISSION FROM MATERIALS SCIENCE, INC. IS EXPRESSLY PROHIBITED. |                         |
| MACHINE SURFACES UNLESS OTHERWISE SPECIFIED $\sqrt{125}$   |         | FINISH   |                         |
| NEXT ASSEMBLY  | USED ON | SIZE <b>D</b>  | CAGE CODE               |
| APPLICATION  |         | DWG. NO. <b>00000321</b>   | REV -                   |
| DO NOT SCALE DRAWING   |         | SCALE: 1/1   | WT: DISP: SHEET: 1 OF 1 |

DWG. NO. 00000321 REV. -