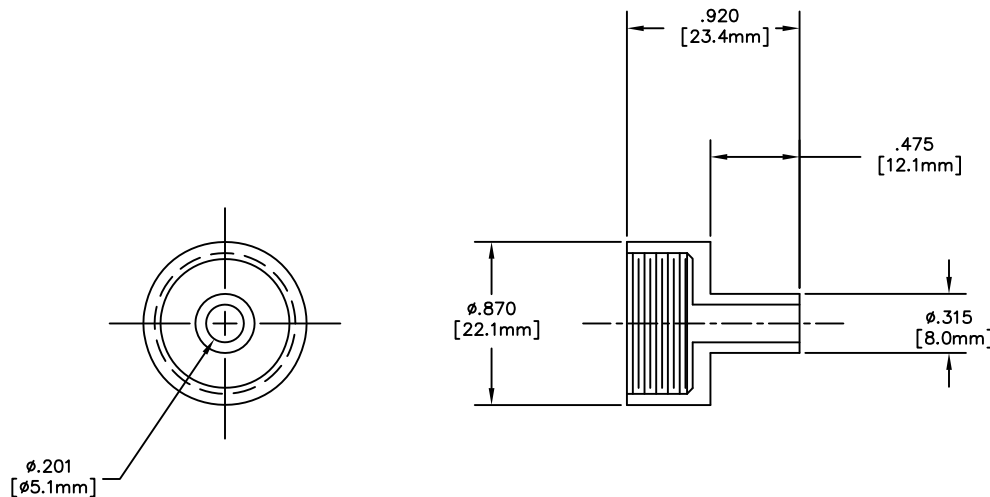


NOTES: UNLESS OTHERWISE SPECIFIED

1. INTERPRET DIMENSIONS AND TOLERANCING IAW ANSI Y14.5M - 1982.
  2. BREAK SHARP EDGES .002-.015.
  3. INTERPRET ABBREVIATIONS IAW MIL-STD-12.
  4. DIMENSIONS IN BRACKETS "[ ]" DENOTE REFERENCE DIMENSIONS IN MILLIMETERS.
- 5 MATERIAL:  
25 PERCENT GLASS FILLED TEFLON. COLOR: WHITE.

REVISION				
ZONE	REV	DESCRIPTION	DATE	APPROVED
	-	INITIAL RELEASE	960429	
	A	CH'D THREAD DEPTH	050511	J.MILLER



			00000028-1	INSULATOR, .190 MACHINE SCREW	5		1
	-1	CAGE CODE	PART OR IDENTIFYING NO.	NOMENCLATURE OR DESCRIPTION	MATERIAL SPECIFICATION	ZONE	ITEM NO.
QUANTITY PER ASSEMBLY		PARTS LIST					
		DRAWN: G. CERVANTES		96/04/29		MATERIALS SCIENCE, INC. Vacuum and Thin Film Technology www.msinc.com	
		UNLESS OTHERWISE SPECIFIED DIMENSIONS ARE IN INCHES TOLERANCES ARE: DECIMALS ANGLES X .000 .0000 X .000 .0000 X .000 .0000		APPROVAL		INSULATOR, .190 MACHINE SCREW	
		MACHINE SURFACES UNLESS OTHERWISE SPECIFIED 120		THE DRAWING CONTAINS PROPRIETARY INFORMATION AND IS UNCLASSIFIED AS OF THIS DATE. RELEASE TO THE PUBLIC IS PROHIBITED UNLESS OTHERWISE NOTED BY SPECIAL INSTRUCTIONS.			
NEXT ASSEMBLY		USED ON		FINISH		SIZE C	REV A
APPLICATION		DO NOT SCALE DRAWING		SCALE: 1/1		DWG. NO. 00000028	SHEET: 1 OF 1

DWG NO. 00000028 REV A