

4

3

2

1

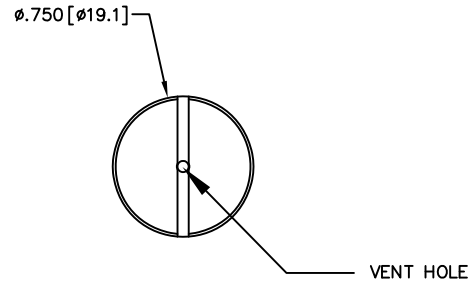
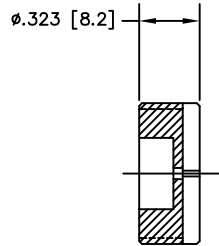
NOTES: UNLESS OTHERWISE SPECIFIED

- 1. INTERPRET DIMENSIONS AND TOLERANCING IAW ANSI Y14.5M - 1982.
- 2. BREAK SHARP EDGES .002-.015.
- 3. INTERPRET ABBREVIATIONS IAW MIL-STD-12.
- 4. DIMENSIONS IN BRACKETS "[]" DENOTE REFERENCE DIMENSIONS IN MILLIMETERS.



MATERIAL: VIRGIN ELECTRICAL GRADE PTFE TEFLON. COLOR: WHITE.

REVISION				
ZONE	REV	DESCRIPTION	DATE	APPROVED
	-	INITIAL RELEASE	960429	



	<input checked="" type="checkbox"/>	00000029-1	INSULATOR CAP, .190 MACHINE SCREW	$\triangle 5$		1	
	-1	CAGE CODE	PART OR IDENTIFYING NO.	NOMENCLATURE OR DESCRIPTION	MATERIAL SPECIFICATION	ZONE	ITEM NO.
QUANTITY PER ASSEMBLY		PARTS LIST					
				DRAWN: G. CERYANTES 96/04/29 APPROVAL:	MATERIALS SCIENCE, INC. Vacuum and Thin Film Technology <small>1000/10000-0000</small>		
				UNLESS OTHERWISE SPECIFIED DIMENSIONS ARE IN INCHES TOLERANCES ARE: DECIMALS ANGLES .X ± .030 ± 0°30' .XX ± .010 ± 0°00' .XXX ± .005	INSULATOR-CAP, .190 MACHINE SCREW		
				MACHINED SURFACES UNLESS OTHERWISE SPECIFIED 125			
				THE BUYER ASSUMES RESPONSIBILITY FOR THE USE OF THIS DRAWING UNLESS THE BUYER HAS BEEN ADVISED TO THE CONTRARY BY THE DRAWING ENGINEER	SIZE C SCALE: 1/1 WT:	DWG. NO. 00000029 REV -	SHEET 1 OF 1
				NEXT ASSEMBLY USED ON APPLICATION DO NOT SCALE DRAWING			

DWG NO. 00000029 REV -

4

3

2

1

D

D

C

C

B

A

A