

4

3

2

1

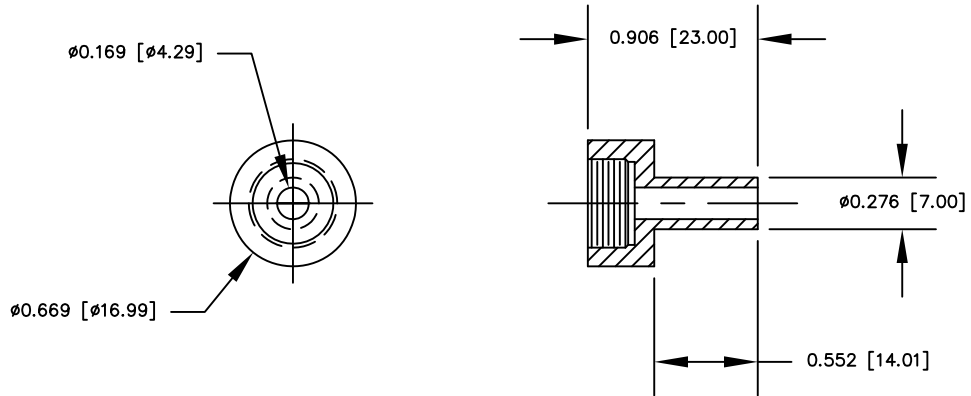
NOTES: UNLESS OTHERWISE SPECIFIED

- 1. INTERPRET DIMENSIONS AND TOLERANCING IAW ANSI Y14.5M - 1982.
- 2. BREAK SHARP EDGES .002-.015.
- 3. INTERPRET ABBREVIATIONS IAW MIL-STD-12.



MATERIAL:
25 PERCENT GLASS FILLED TEFLON.

REVISION				
ZONE	REV	DESCRIPTION	DATE	APPROVED
	-	INITIAL RELEASE	971098	



<input checked="" type="checkbox"/>		00000271-1	INSULATOR, .138 MACHINE SCREW			1
	CAGE CODE	PART OR IDENTIFYING NO.	NOMENCLATURE OR DESCRIPTION	MATERIAL SPECIFICATION	ZONE	ITEM NO.
QUANTITY PER ASSEMBLY	PARTS LIST					
			DRAWN: G. CERVANTES 97/10/08	MATERIALS SCIENCE, INC. Vacuum and Thin Film Technology <small>www.msinc.com</small>		
			UNLESS OTHERWISE SPECIFIED DIMENSIONS ARE IN INCHES TOLERANCES ARE: DIMENSIONS FINISHES X .000 .000 X .000 .000 X .000 .000 X .000 .000	INSULATOR, .138 MACHINE SCREW		
			MACHINE SURFACES UNLESS OTHERWISE SPECIFIED 120 <input checked="" type="checkbox"/>			
NEXT ASSEMBLY	USED ON		FINISH	SCALE: 1/1	WT:	DISP:
APPLICATION			DO NOT SCALE DRAWING	SIZE: C	CAGE CODE:	DWG. NO. 00000271
						REV: -
						SHEET: 1 OF 1

DWG NO. 00000271 REV -

4

3

2

1

D

C

B

A

D

C

A