

4

3

2

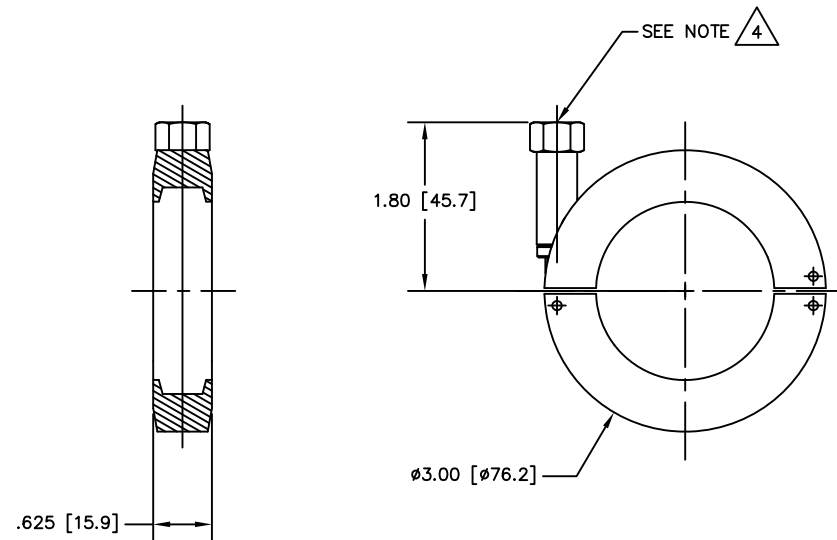
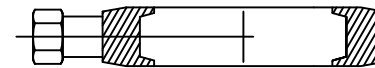
1

NOTES: UNLESS OTHERWISE SPECIFIED

- 1. INTERPRET DIMENSIONS AND TOLERANCING IAW ANSI Y14.5M - 1982.
- 2. BREAK SHARP EDGES .002-.015.
- 3. INTERPRET ABBREVIATIONS IAW MIL-STD-12.

4.  COATED WITH PROPRIETARY UHV COMPATIBLE ANTI-GALLING AND SEIZURE COATING.

REVISION				
ZONE	REV	DESCRIPTION	DATE	APPROVED
	-	INITIAL RELEASE	110323	



DWG NO. 0000099

		0000099	CLAMP, SWING, KF-40	304 CRES		1	
		CAGE CODE	PART OR IDENTIFYING NO.	NOMENCLATURE OR DESCRIPTION	MATERIAL SPECIFICATION	ZONE	ITEM NO.
QUANTITY PER ASSEMBLY		PARTS LIST					
			UNLESS OTHERWISE SPECIFIED DIMENSIONS ARE IN INCHES TOLERANCES ARE: DECIMALS ANGLES X .000 .0000 JUL 2 2000 JUL 2 2000	DRAWN J. MILLER 11/9/23	MATERIALS SCIENCE, INC. Vacuum and Thin Film Technology <small>www.msinc.com</small>		
			MACHINE SURFACES UNLESS OTHERWISE SPECIFIED 120	APPROVAL	CLAMP, SWING, KF-40		
			FINISH		SIZE C	CAGE CODE	DWG. NO. 0000099
			NEXT ASSEMBLY	USED ON	SCALE: 1/1	WR	DISP
			APPLICATION	DO NOT SCALE DRAWING	SHEET: 1 OF 1		

4

3

2

1

D

D

C

C

B

A

A