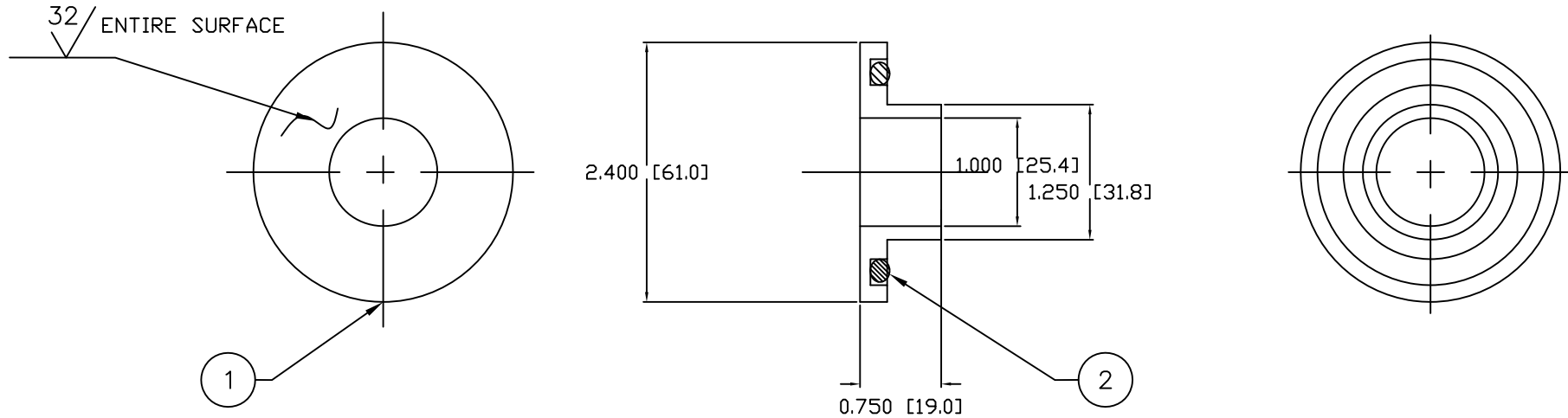


NOTES: UNLESS OTHERWISE SPECIFIED

1. INTERPRET DIMENSIONS AND TOLERANCING IAW ANSI Y14.5M - 1982.
2. BREAK SHARP EDGES .002-.015.
3. INTERPRET ABBREVIATIONS IAW MIL-STD-12.
4. ELECTROPOLISH AFTER FABRICATION.

REVISION				
ZONE	REV	DESCRIPTION	DATE	APPROVED
	—	ORIGINAL RELEASE	060203	



QUANTITY PER ASSEMBLY	CAGE CODE	PART OR IDENTIFYING NO.	NOMECLATURE OR DESCRIPTION	MATERIAL SPECIFICATION	ZONE	ITEM NO.
1		00000153-2326	O-RING	VITON		2
1		00000581-1	BASEPLATE ADPATOR, 32.5MM TO 1"	CRES 304		1



QUANTITY PER ASSEMBLY		PARTS LIST			
		UNLESS OTHERWISE SPECIFIED DIMENSIONS ARE IN INCHES TOLERANCES ARE: DECIMALS .X ± .030 .XX ± .010 .XXX ± .005	DRAWN <i>J. MILLER</i>	06/02/03	MATERIALS SCIENCE, INC. <i>Vacuum and Thin Film Technology</i> http://www.msi-pse.com
		MACHINE SURFACES UNLESS OTHERWISE SPECIFIED 125 ✓	APPROVAL		
NEXT ASSEMBLY	USED ON	FINISH	THIS DRAWING CONTAINS PROPRIETARY INFORMATION AND ANY REPRODUCTION, DISCLOSURE OR USE OF THIS DRAWING WITHOUT WRITTEN PERMISSION FROM MATERIALS SCIENCE, INC. IS EXPRESSLY PROHIBITED		BASEPLATE ADAPTOR ASSY, 32.5MM TO 1"
APPLICATION		DO NOT SCALE DRAWING	SIZE B	CAGE CODE	DWG. NO. 00000581
			SCALE: 1/1	WT:	DISP:
					SHEET: 1 OF 1