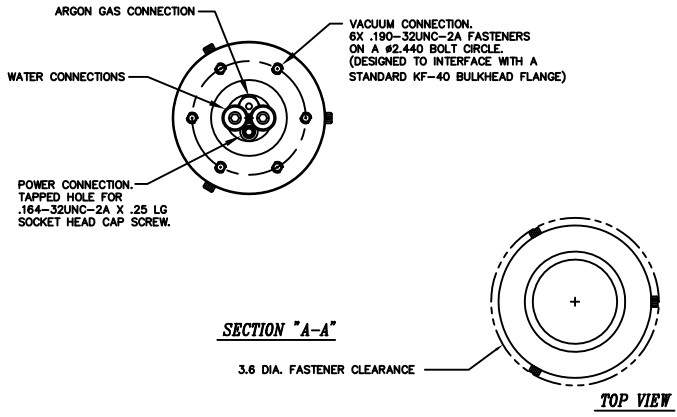
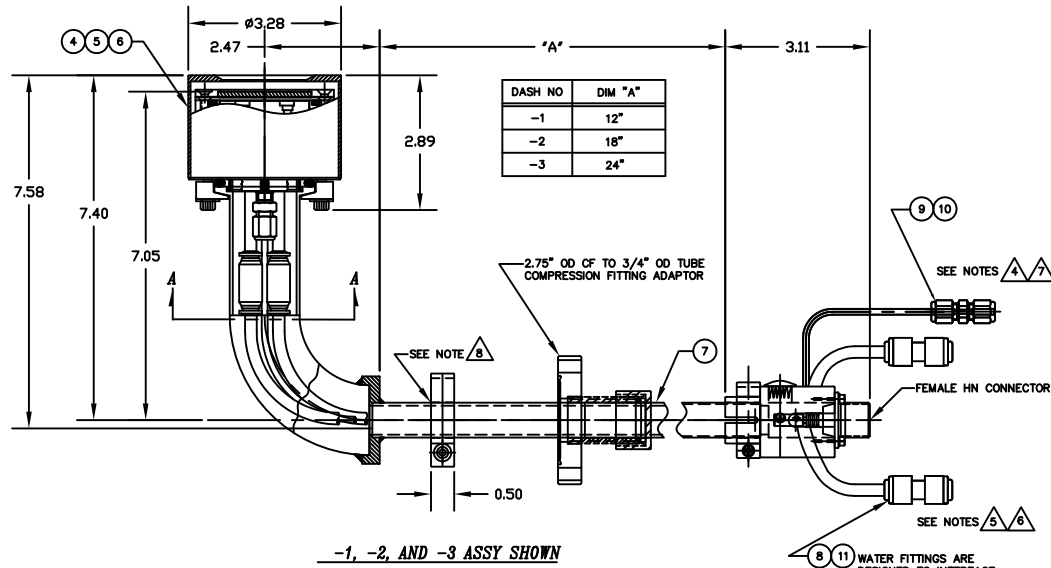


REV	DATE	DESCRIPTION	BY	APP'D
INITIAL RELEASE	080703			

- NOTES: UNLESS OTHERWISE SPECIFIED
- INTERPRET DRAWING IAW THE GLOBAL PROFESSIONAL PUBLICATIONS "DRAWING REQUIREMENTS MANUAL", EIGHTH EDITION.
  - INTERPRET DIMENSIONS AND TOLERANCES IAW ANSI Y14.5M - 1982.
  - INTERPRET ABBREVIATIONS IAW MIL-STD-12.
  - △** GAS FITTING (INCLUDED), SWAGelok (ITEM 6) IS AVAILABLE FROM: [HTTP://WWW.SWAGelok.COM](http://www.swagelok.com)
  - △** MINIMUM 60" LONG POLYETHYLENE LINES REQUIRED FOR SAFE OPERATION. USER MUST SUPPLY ADDITIONAL 42" LONG POLYETHYLENE WATER LINES TO MEET THIS REQUIREMENT. DO NOT SUBSTITUTE METAL WATER FITTINGS FOR ITEM 8.
  - △** WATER LINE CONNECTORS (INCLUDED, ITEM 8) ARE AVAILABLE FROM: [HTTP://WWW.JOHNGUEST.COM](http://www.johnguest.com)
  - △** MINIMUM 36" LONG TEFLON PFA LINE REQUIRED (36" INCLUDED WITH SOURCE) FOR SAFE OPERATION. DO NOT USE METAL GAS LINES TO MEET THIS REQUIREMENT - ELECTRICAL ISOLATION IS NECESSARY.
  - △** WRAP TUBE WHERE CLAMP WILL BE LOCATED WITH TEFLON TAPE PRIOR TO TIGHTENING COMPRESSION CLAMP. TAKE CARE NOT TO DING, SCRATCH OR GOUGE POLISHED SURFACE.
  - SEE MATERIALS SCIENCE, INC. DOCUMENT NO. 251011 FOR PROPER INSTALLATION, OPERATION AND USE OF POLARIS SPUTTERING SOURCES.
  - MASS OF SPUTTERING SOURCE FULLY ASSEMBLED IS 8 LBS., DRY.



INSTALLATION CONTROL DRAWING

QTY	UNIT	ASSEMBLY	DESCRIPTION	MATERIAL	ZONE	ITEM NO	
1	1	1	7	00000074-1	TUBING, 1/4" OD X .170" ID X 18"	POLYETHYLENE	11
1	1	1	<b>△</b> 9	00000038-1	TUBING, 1/8" OD X 1/16" ID X 36" MINIMUM	TEFLON PFA	10
1	1	1	<b>△</b> 6	00000316	FITTING, SWAGelok, SS-200-6	316 CRES	9
2	2	2		00000281-1	1/4 INCH OD COUPLING, QUICK CONNECT	P/N C1040BW	8
1	1	1	<b>△</b> 5	00000349	3/4 INCH TUBE FEEDTHROUGH ASSEMBLY	304 CRES	7
1				00000778-3	2 INCH INTERNAL CATHODE (CLAMPED TARGET)		6
1				00000778-2	2 INCH INT CATHODE (DIRECT WATER COOLED TGT)		5
1				00000778-1	2 INCH INTERNAL CATHODE (BONDED TARGET)		4
				00000336-3	2" POLARIS SOURCE, 3/4" OD TUBE RT ANGLE ASSY		3
				00000336-2	2" POLARIS SOURCE, 3/4" OD TUBE RT ANGLE ASSY		2
				00000336-1	2" POLARIS SOURCE, 3/4" OD TUBE RT ANGLE ASSY		1

QUANTITY FOR ASSEMBLY	-3	-2	-1	CAGE CODE	PART OR IDENTIFYING NO.	NOMENCLATURE OR DESCRIPTION	MATERIAL SPECIFICATION	ZONE	ITEM NO
PARTS LIST						MATERIALS SCIENCE, INC. Vacuum and Thin Film Technology			
NEXT ASSEMBLY						2" POLARIS, RT ANGLE, 3/4" OD TUBE, RF/DC FEEDTHRU ASSY			
APPLICATION						DO NOT SCALE DRAWING			
DATE						DATE			
BY						BY			
CHECKED						CHECKED			
DATE						DATE			
SCALE						SCALE			
REV						REV			
1/1						00000336			