

ZONE	REV	DESCRIPTION	DATE	APPROVED
-	-	INITIAL RELEASE	980212	
A ADD PWR CONN. & NOTES 030725				

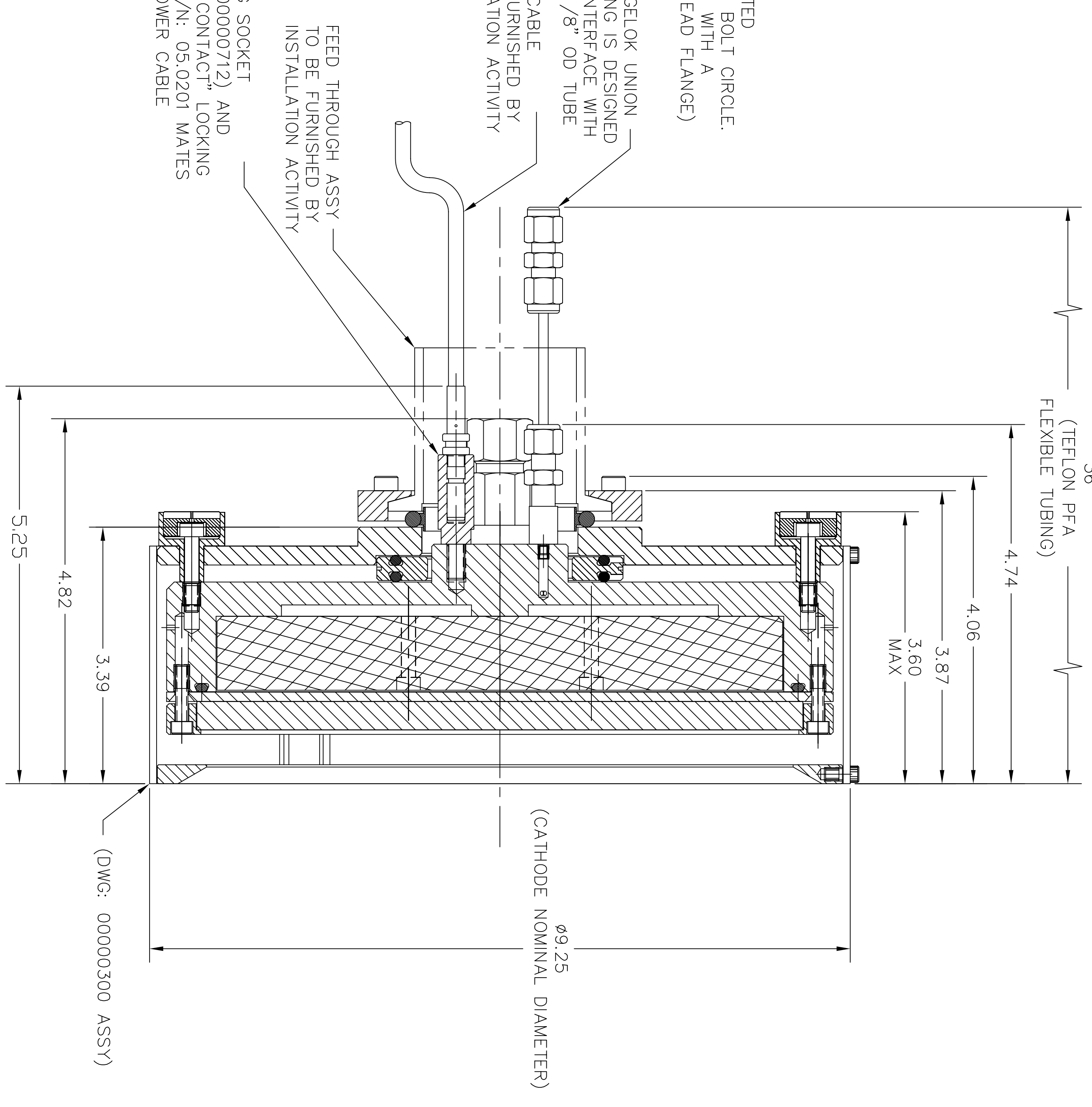
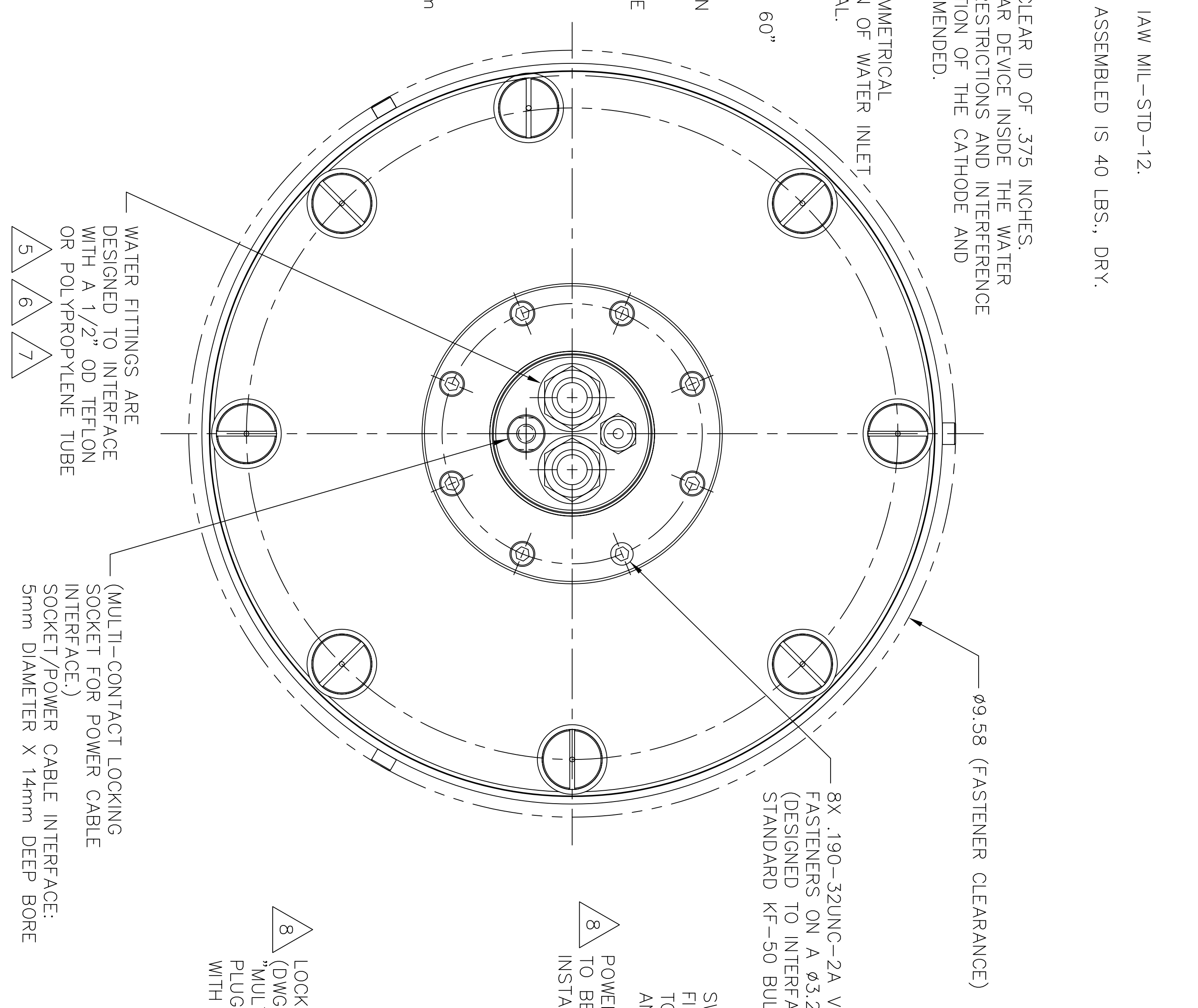
- NOTES: UNLESS OTHERWISE SPECIFIED
- INTERPRET DRAWING IAW THE GLOBAL PROFESSIONAL PUBLICATIONS "DRAWING REQUIREMENTS MANUAL", EIGHTH EDITION.
 - INTERPRET DIMENSIONS AND TOLERANCES IAW ANSI Y14.5M - 1982.
 - INTERPRET ABBREVIATIONS IAW MIL-STD-12.
 - MASS OF CATHODE FULLY ASSEMBLED IS 40 LBS., DRY.
- FOR PROPER INSTALLATION, OPERATION, AND USE OF THE SUNSOURCE PLANAR MAGNETRON CATHODE(S), SEE MATERIALS SCIENCE, INC. DOCUMENT NUMBER 251070.

5 WARNING: WATER FITTINGS HAVE A CLEAR ID OF .375 INCHES. USING A SLEEVE OR SIMILAR DEVICE INSIDE THE WATER HOSE MAY CAUSE FLUID RESTRICTIONS AND INTERFERENCE WITH THE NORMAL OPERATION OF THE CATHODE AND THEREFORE IS NOT RECOMMENDED.

6 WATER CHANNELS ARE SYMMETRICAL THROUGHOUT, ORIENTATION OF WATER INLET OR OUTLET IS NOT CRITICAL.

7 WARNING: MINIMUM HOSE LENGTH OF 60" IS REQUIRED TO ENSURE RESISTIVITY RELATIVE TO ELECTRICAL GROUND WITHIN 50 KILOHMS. TEST CABLE WITH AN OHM METER OR OTHER SUITABLE DEVICE BEFORE USE.

8 MULTI-CONTACT-USA:
5560 SKYLANE BLVD.
SANTA ROSA, CA 95403
VOICE: (707) 575-7575
FAX: (707) 575-7373
INTERNET:
www.multi-contact-usa.com



INSTALLATION CONTROL DRAWING

QUANTITY PER ASSEMBLY	CAGE CODE	PART OR IDENTIFYING NO.	NOMENCLATURE OR DESCRIPTION	MATERIAL SPECIFICATION	ZONE	ITEM NO
			PARTS LIST			

UNLESS OTHERWISE SPECIFIED DIMENSIONS ARE IN INCHES	APPROVALS	DRAWN G. CERVANTES 98/02/12
ANGLES ±0.50		
DECIMALS ARE:		
X 1.000		
XXX 1.000		
MACHINE SURFACES SPECIFIED UNLESS OTHERWISE NOTED		
FINISH		

THIS DRAWING CONTAINS PROPRIETARY INFORMATION AND IS THE PROPERTY OF MATERIALS SCIENCE, INC. DISSEMINATION OR REPRODUCTION WITHOUT WRITTEN PERMISSION FROM MATERIALS SCIENCE, INC. IS EXPRESSLY PROHIBITED.	SIZE D	CAGE CODE	DWG. NO.	00000416	REV A
	SCALE: 1/1	WT:	DSR:		SHEET 1 OF 1

APPLICATION	USED ON	DO NOT SCALE DRAWING		