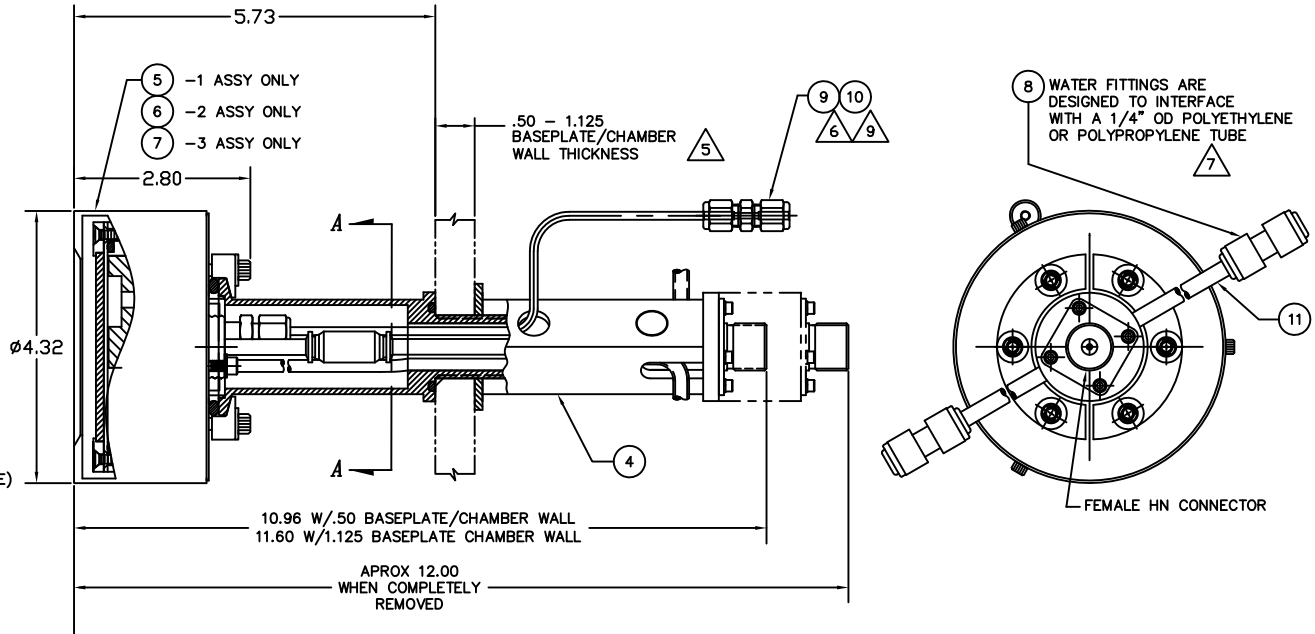
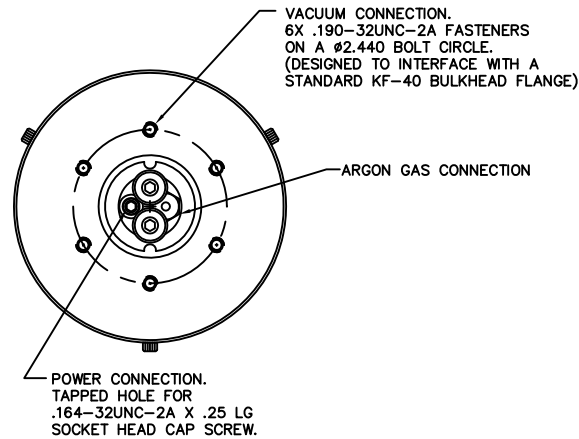


NOTES: UNLESS OTHERWISE SPECIFIED

1. INTERPRET DRAWING IAW THE GLOBAL PROFESSIONAL PUBLICATIONS "DRAWING REQUIREMENTS MANUAL", EIGHTH EDITION.
2. INTERPRET DIMENSIONS AND TOLERANCES IAW ANSI Y14.5M - 1982.
3. BREAK SHARP EDGES .002-015.
4. INTERPRET ABBREVIATIONS IAW MIL-STD-12.
5. LENGTH OF POWER CENTER CONDUCTOR CABLE ASSY (PART OF ITEM 4) IS FOR A STANDARD 1 1/2" BASEPLATE/CHAMBER WALL CONFIGURATION. PLEASE SPECIFY CHAMBER WALL THICKNESS WHEN ORDERING TO ENSURE PROPER CABLE LENGTH AT TIME OF ASSY.
6. GAS FITTING (INCLUDED), SWAGelok (ITEM 9) IS AVAILABLE FROM: [HTTP://WWW.SWAGELOK.COM](http://www.swagelok.com)
7. MINIMUM 60" LONG POLYETHYLENE LINES REQUIRED FOR SAFE OPERATION. USER MUST SUPPLY ADDITIONAL 42" LONG POLYETHYLENE WATER LINES TO MEET THIS REQUIREMENT. DO NOT SUBSTITUTE METAL WATER FITTINGS FOR ITEM 8.
8. WATER LINE CONNECTORS (INCLUDED, ITEM 8) ARE AVAILABLE FROM: [HTTP://WWW.JOHNQUEST.COM](http://www.johnguest.com)
9. MINIMUM 36" LONG TEFLON PFA LINE REQUIRED (36" INCLUDED WITH SOURCE) FOR SAFE OPERATION. DO NOT USE METAL GAS LINES TO MEET THIS REQUIREMENT - ELECTRICAL ISOLATION IS NECESSARY.
10. SEE MATERIALS SCIENCE, INC. DOCUMENT NO. 251011 FOR PROPER INSTALLATION, OPERATION AND USE OF POLARIS SPUTTERING SOURCES.
11. MASS OF SPUTTERING SOURCE FULLY ASSEMBLED IS 5 LBS., DRY.



-1, -2, AND -3 ASSY SHOWN



SECTION "A-A"

4.60 DIA. FASTENER CLEARANCE

INSTALLATION CONTROL DRAWING

QTY	REV	DESCRIPTION	MATERIAL SPECIFICATION	ZONE	ITEM NO			
1	1	1	7	00000074-1	TUBING, 1/4" OD X .170" ID X 18"	POLYETHYLENE	11	
1	1	1	9	00000038-1	TUBING, 1/8" OD X 1/16" ID X 36" MINIMUM	TEFLON PFA	10	
1	1	1	6	00000316	FITTING, SWAGelok, SS-200-6	316 CRES	9	
2	2	2	8	00000281-1	1/4 INCH OD COUPLING, QUICK CONNECT	P/N C10408W	8	
1				00000697-3	3 INCH INTERNAL CATHODE ASSY		7	
	1			00000697-2	3 INCH INTERNAL CATHODE ASSY		6	
		1		00000697-1	3 INCH INTERNAL CATHODE ASSY		5	
1	1	1		00000787-1	RF FEEDTHROUGH ASSY, KF-40 /1" BASEPLATE		4	
				00000719-3	3 INCH INTERNAL CATHODE (CLAMPED TARGET)		3	
				00000719-2	3 INCH INT CATHODE (DIRECT WATER COOLED TGT)		2	
				00000719-1	3 INCH INTERNAL CATHODE (BONDED TARGET)		1	
QTY PER ASSEMBLY	REV	DESCRIPTION	CAGE CODE	PART OR IDENTIFYING NO.	NOMENCLATURE OR DESCRIPTION	MATERIAL SPECIFICATION	ZONE	ITEM NO
-3	-2	-1						

UNLESS OTHERWISE SPECIFIED DIMENSIONS ARE IN INCHES TOLERANCES ARE: DECIMALS .0005 FRACTIONS 1/32 HOLE POSITION .005 HOLE SIZE .0015 UNLESS OTHERWISE SPECIFIED		DRAWN: J. MILLER 07/08/26 APPROVAL: _____	MATERIALS SCIENCE, INC. Vacuum and Thin Film Technology www.ms-science.com
THIS DRAWING CONTAINS PROPRIETARY INFORMATION AND ANY REPRODUCTION, DISCLOSURE OR USE OF THIS DRAWING WITHOUT WRITTEN PERMISSION FROM MATERIALS SCIENCE, INC. IS EXPRESSLY PROHIBITED.		3 INCH INT POLARIS, 1" BASE-PLATE RF/DC FEEDTHROUGH	
NEXT ASSEMBLY: _____ APPLICATION: _____	USED ON: _____	SIZE: D SCALE: 1/1 DO NOT SCALE DRAWING	SHEET: 1 OF 1