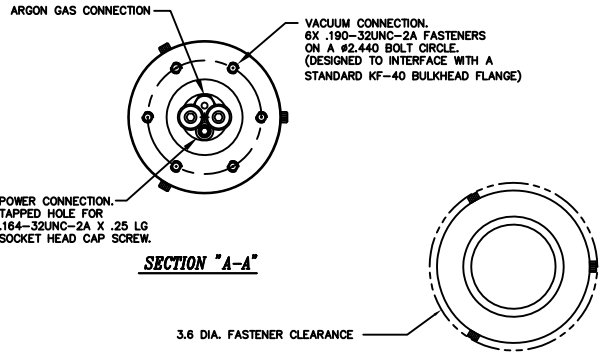
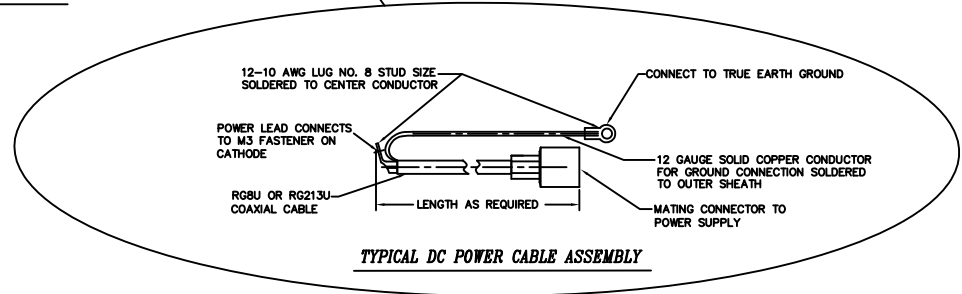
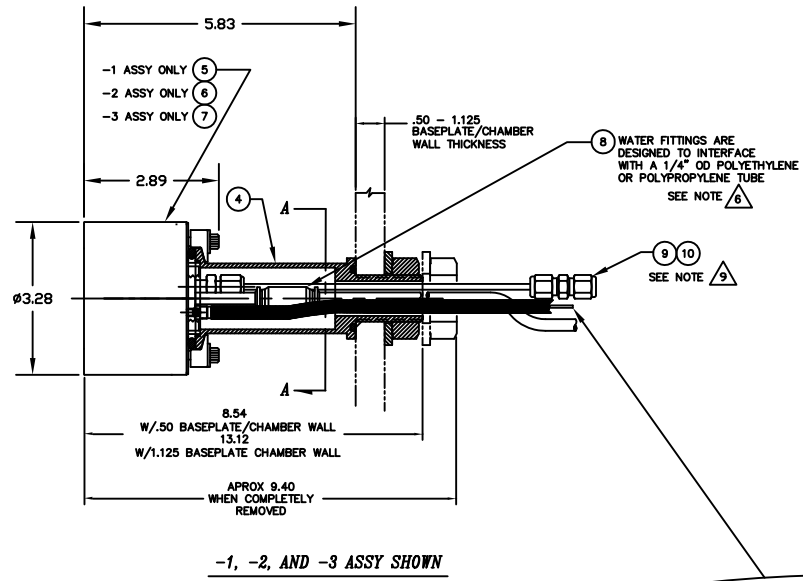


REV	DESCRIPTION	DATE	APPROVED
1	INITIAL RELEASE	070918	

- NOTES: UNLESS OTHERWISE SPECIFIED
- INTERPRET DRAWING IAW THE GLOBAL PROFESSIONAL PUBLICATIONS "DRAWING REQUIREMENTS MANUAL", EIGHTH EDITION.
 - INTERPRET DIMENSIONS AND TOLERANCES IAW ANSI Y14.5M - 1982.
 - INTERPRET ABBREVIATIONS IAW MIL-STD-12.
- ▲ GAS FITTING (INCLUDED), SWAGelok (ITEM 9) IS ALSO AVAILABLE FROM: [HTTP://WWW.SWAGELOK.COM](http://www.swagelok.com)
- ▲ MINIMUM 60" LONG POLYETHYLENE LINES REQUIRED FOR SAFE OPERATION. USER MUST SUPPLY POLYETHYLENE WATER LINES TO MEET THIS REQUIREMENT. USE OF METAL WATER FITTINGS ON SHORTER LENGTHS IS DANGEROUS!
- ▲ WATER LINE TUBE UNIONS. (ITEM 8) ARE INCLUDED WITH SOURCE. DO NOT USE ON WATER LINES SHORTER THAN 60 INCHES. THEY ARE ALSO AVAILABLE FROM: ALPHA TECHNOLOGIES ALPHA PART NUMBER 88040-04 [HTTP://WWW.ALPHAFITTINGS.COM](http://www.alpha fittings.com)
7. SEE MATERIALS SCIENCE, INC. DOCUMENT NO. 251011 FOR PROPER INSTALLATION, OPERATION AND USE OF POLARIS SPUTTERING SOURCES.
8. MASS OF SPUTTERING SOURCE FULLY ASSEMBLED IS 5 LBS, 7 OZS, DRY
- ▲ MINIMUM 36" LONG TEFLON PFA LINE REQUIRED (36" INCLUDED WITH SOURCE) FOR SAFE OPERATION. DO NOT USE METAL GAS LINES TO MEET THIS REQUIREMENT - ELECTRICAL ISOLATION IS NECESSARY.



INSTALLATION CONTROL DRAWING

QTY	REV	DESCRIPTION	MATERIAL SPECIFICATION	ZONE	ITEM NO			
1	1	1	▲ 00000074-1 TUBING, 1/4" OD X .170" ID X 18"	POLYETHYLENE	11			
1	1	1	00000038-1 TUBING, 1/8" OD X 1/16" ID X 36" MINIMUM	TEFLON PFA	10			
1	1	1	▲ 000000316 FITTING, SWAGelok, SS-200-6	316 CRES	9			
2	2	2	▲ 00000658-2 1/4 INCH OD COUPLING, QUICK CONNECT		8			
1			00000778-3 2 INCH INTERNAL CATHODE ASSY		7			
1			00000778-2 2 INCH INTERNAL CATHODE ASSY		6			
		1	00000778-1 2 INCH INTERNAL CATHODE ASSY		5			
1	1	1	00000788 DC FEEDTHROUGH ASSY, KF-40/1" BASEPLATE		4			
			00000786-3 2 INCH INTERNAL CATHODE (CLAMPED TARGET)		3			
			00000786-2 2 INCH INT CATHODE (DIRECT WATER COOLED TGT)		2			
			00000786-1 2 INCH INTERNAL CATHODE (BONDED TARGET)		1			
-3	-2	-1	CAGE CODE	PART OR IDENTIFYING NO.	NOMENCLATURE OR DESCRIPTION	MATERIAL SPECIFICATION	ZONE	ITEM NO

APPROVED	DATE	BY	DATE
		J. MILLER	07/09/18
NEXT ASSEMBLY		USED ON	DO NOT SCALE DRAWING
APPLICATION		SCALE	1/1

00000786

2 INCH INTERNAL POLARIS, 1" BASEPLATE FEEDTHROUGH

00000786