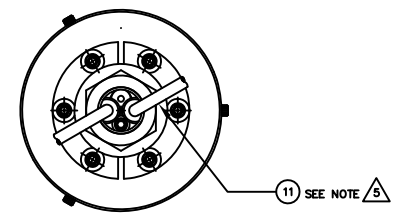
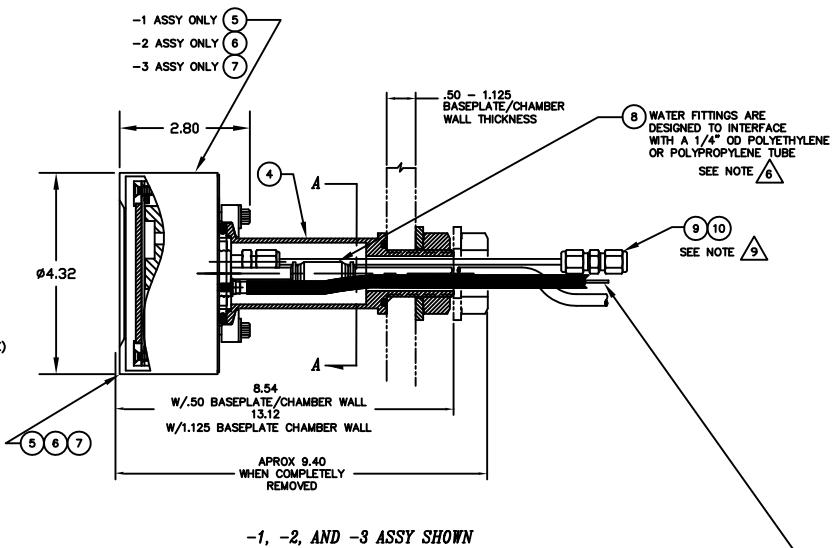


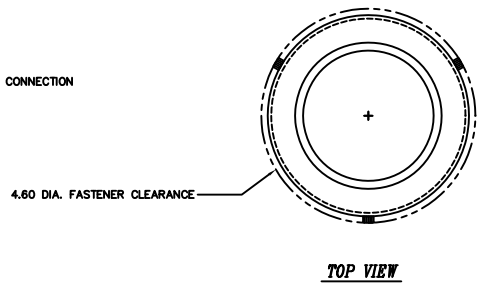
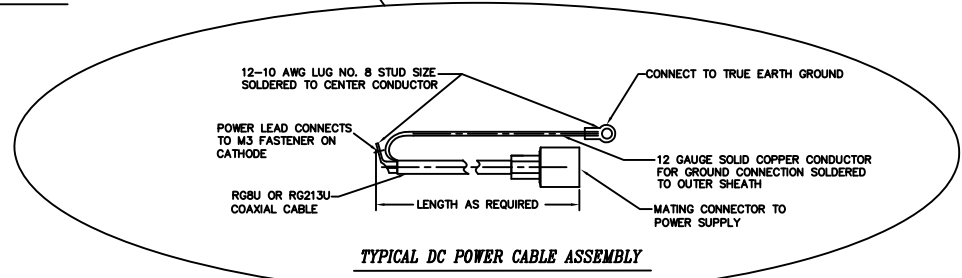
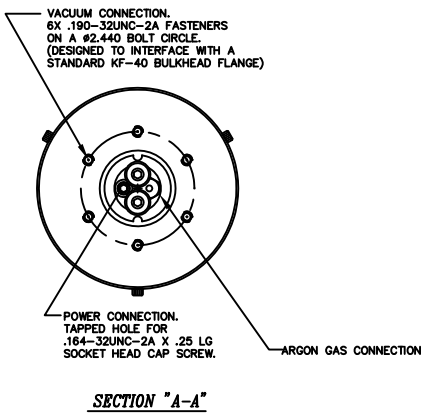
REV	DATE	DESCRIPTION	BY	APP'D
1		INITIAL RELEASE	070926	

- NOTES: UNLESS OTHERWISE SPECIFIED
- INTERPRET DRAWING IAW THE GLOBAL PROFESSIONAL PUBLICATIONS "DRAWING REQUIREMENTS MANUAL", EIGHTH EDITION.
 - INTERPRET DIMENSIONS AND TOLERANCES IAW ANSI Y14.5M - 1982.
 - INTERPRET ABBREVIATIONS IAW MIL-STD-12.

- GAS FITTING (INCLUDED), SWAGelok (ITEM 9) IS ALSO AVAILABLE FROM: [HTTP://WWW.SWAGELOK.COM](http://www.swagelok.com)
- MINIMUM 60" LONG POLYETHYLENE LINES REQUIRED FOR SAFE OPERATION. USER MUST SUPPLY POLYETHYLENE WATER LINES TO MEET THIS REQUIREMENT. USE OF METAL WATER FITTINGS ON SHORTER LENGTHS IS DANGEROUS!
- WATER LINE TUBE UNIONS. (ITEM 8) ARE INCLUDED WITH SOURCE. DO NOT USE ON WATER LINES SHORTER THAN 60 INCHES. THEY ARE ALSO AVAILABLE FROM: ALPHA TECHNOLOGIES ALPHA PART NUMBER 88040-04 [HTTP://WWW.ALPHAFITTINGS.COM](http://www.alpha fittings.com)
- SEE MATERIALS SCIENCE, INC. DOCUMENT NO. 251011 FOR PROPER INSTALLATION, OPERATION AND USE OF POLARIS SPUTTERING SOURCES.
- MASS OF SPUTTERING SOURCE FULLY ASSEMBLED IS 5 LBS, 7 OZS, DRY.
- MINIMUM 36" LONG TEFLON PFA LINE REQUIRED (36" INCLUDED WITH SOURCE) FOR SAFE OPERATION. DO NOT USE METAL GAS LINES TO MEET THIS REQUIREMENT - ELECTRICAL ISOLATION IS NECESSARY.



-1, -2, AND -3 ASSY SHOWN



INSTALLATION CONTROL DRAWING

QTY	REV	DESCRIPTION	MATERIAL	ZONE	ITEM NO		
1	1	1	△	00000074-1	TUBING, 1/4" OD X .170" ID X 18"	POLYETHYLENE	11
1	1	1	△	00000038-1	TUBING, 1/8" OD X 1/16" ID X 36" MINIMUM	TEFLON PFA	10
1	1	1	△	000000316	FITTING, SWAGelok, SS-200-6	316 CRES	9
2	2	2	△	00000658-2	1/4 INCH OD COUPLING, QUICK CONNECT		8
1				00000697-3	3 INCH INTERNAL CATHODE ASSY		7
1				00000697-2	3 INCH INTERNAL CATHODE ASSY		6
				00000697-1	3 INCH INTERNAL CATHODE ASSY		5
1	1	1		00000788	DC FEEDTHROUGH ASSY, KF-40/1" BASEPLATE		4
				00000792-3	3 INCH INTERNAL CATHODE (CLAMPED TARGET)		3
				00000792-2	3 INCH INT CATHODE (DIRECT WATER COOLED TGT)		2
				00000792-1	3 INCH INTERNAL CATHODE (BONDED TARGET)		1

PARTS LIST NOMENCLATURE OR DESCRIPTION MATERIAL SPECIFICATION ZONE ITEM NO	3 INCH INTERNAL POLARIS, 1" BASEPLATE FEEDTHROUGH 00000792 1/1
--	--