

- NOTES: UNLESS OTHERWISE SPECIFIED
- INTERPRET DRAWING IAW THE GLOBAL PROFESSIONAL PUBLICATIONS "DRAWING REQUIREMENTS MANUAL", EIGHTH EDITION.
 - INTERPRET DIMENSIONS AND TOLERANCES IAW ANSI Y14.5M - 1982.
 - INTERPRET ABBREVIATIONS IAW MIL-STD-12.

4 WARNING:
WATER FITTINGS HAVE A CLEAR ID OF .375 INCHES. USING A SLEEVE OR SIMILAR DEVICE INSIDE THE WATER HOSE MAY CAUSE FLUID RESTRICTIONS AND INTERFERENCE WITH THE NORMAL OPERATION OF THE CATHODE AND THEREFORE IS NOT RECOMMENDED.

5 WATER CHANNELS ARE SYMMETRICAL THROUGHOUT. ORIENTATION OF WATER INLET OR OUTLET IS NOT CRITICAL.

6 WARNING:
MINIMUM HOSE LENGTH OF 60" IS REQUIRED TO ENSURE RESISTIVITY RELATIVE TO ELECTRICAL GROUND WITHIN 50 KILO OHMS. TEST CABLE WITH AN OHM METER OR OTHER SUITABLE DEVICE BEFORE USE.

7 MULTI-CONTACT-USA:
5560 SKYLANE BLVD.
SANTA ROSA, CA 95403
VOICE: (707) 575-7575
FAX: (707) 575-7373
INTERNET:
www.multi-contact-usa.com

8 FOR PROPER INSTALLATION, OPERATION, AND USE OF THE SUNSOURCE PLASMA METER(S) SEE MATERIALS SCIENCE, INC. DOCUMENT NUMBER 251091.

9 P/N 88040-08 IS AVAILABLE FROM:
ALPHA TECHNOLOGIES
320 PREMIER COURT, SUITE 222
FRANKLIN, TN 37067
TEL: (615) 771-6650
HTTP://WWW.ALPHAFITTINGS.COM

10 ALL FASTENERS ARE METRIC.

11 DIMENSIONS IN BRACKETS "[]" DENOTE REFERENCE DIMENSIONS IN MILLIMETERS.

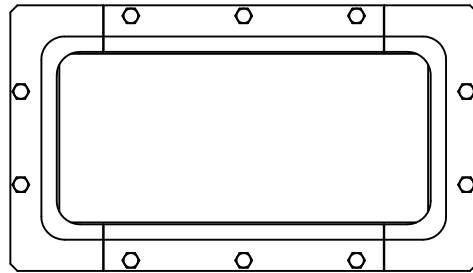
12 TARGET UTILIZATION IS HIGHEST FOR BONDED & CLAMPED TARGETS. DIRECTLY WATER COOLED TARGETS MUST BE SLIGHTLY LONGER & WIDER - THIS EXTRA AREA IS NOT SPUTTERED. THEREFORE TARGET UTILIZATION IS LOWER - BY DEFINITION.

13 ADD .100 [2.54] WHEN CLAMPED TARGETS ARE USED. A TALLER SET OF SIDE ANODE/GROUND SHIELDS ARE REQUIRED TO MAINTAIN THE PROPER DARK SPACE GAP WHEN CLAMPED TARGETS ARE USED. BONDED AND DIRECTLY WATER COOLED TARGETS USE THE STANDARD SIDE SHIELDS SHOWN AND DIMENSIONED.

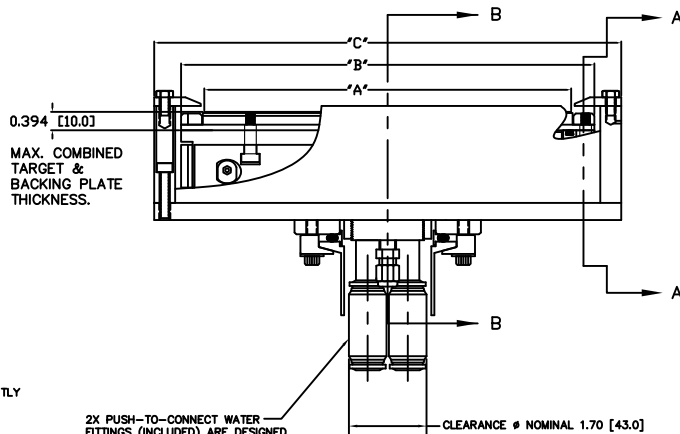
TARGET LENGTH	"A" DIMENSION	"B" DIMENSION	"C" DIMENSION
200MM	7.874 [200]	8.914 [224.4]	10.064 [255.6]
250MM	9.843 [250]	10.847 [275.5]	11.997 [304.7]
300MM	11.811 [300]	12.812 [325.4]	13.962 [354.6]
400MM	15.748 [400]	16.749 [425.4]	17.899 [454.6]
500MM	19.685 [500]	20.686 [525.4]	21.836 [554.6]

NOTES:

- TARGET DIMENSIONS NOTED IN TABLE ARE FOR COMMON SIZES.
- OTHER TARGET LENGTHS CAN BE ACCOMMODATED.
- LINEAR DIMENSIONS IN TABLE SCALE EXACTLY.

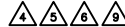


TOP VIEW

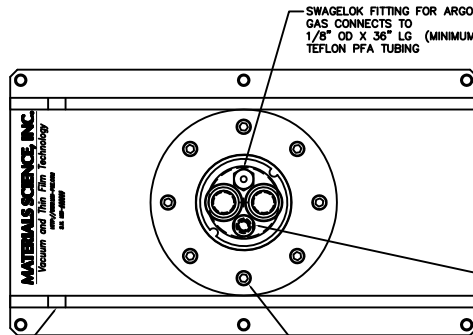


MAX. COMBINED TARGET & BACKING PLATE THICKNESS.

2X PUSH-TO-CONNECT WATER FITTINGS (INCLUDED) ARE DESIGNED TO INTERFACE WITH A .50 OD POLYETHYLENE TUBE



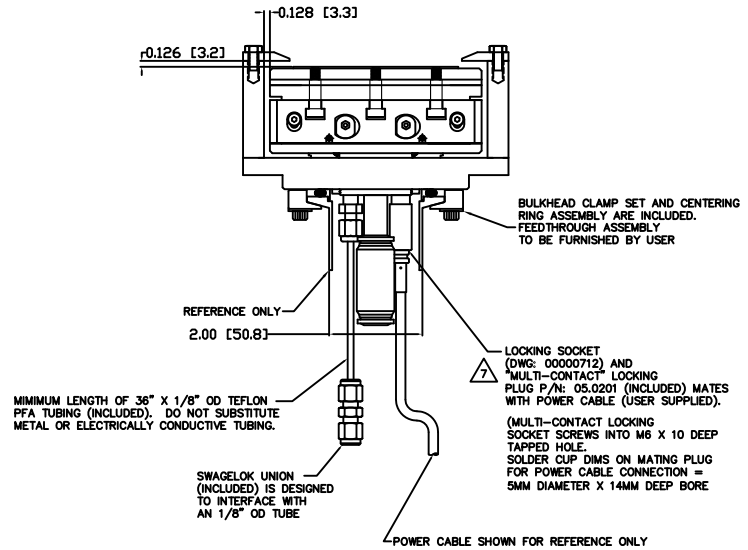
BONDED TARGET ASSEMBLY SHOWN



BOTTOM VIEW

MOUNTING HOLES: THROUGH HOLES, NUMBER AND SIZE AS REQUIRED

6X M5-1.0 FASTENERS ON A #3.250 BOLT CIRCLE. (DESIGNED TO INTERFACE WITH A STANDARD KF-50 BULKHEAD FLANGE)



SECTION A-A

MINIMUM LENGTH OF 36" X 1/8" OD TEFLON PFA TUBING (INCLUDED), DO NOT SUBSTITUTE METAL OR ELECTRICALLY CONDUCTIVE TUBING.

REFERENCE ONLY
2.00 [50.8]

LOCKING SOCKET (P/N: 06000712) AND MULTI-CONTACT LOCKING PLUG P/N: 05.0201 (INCLUDED) MATES WITH POWER CABLE (USER SUPPLIED).

(MULTI-CONTACT LOCKING SOCKET SCREWS INTO M6 X 10 DEEP TAPPED HOLE. SOLDER CUP DIMS ON MATING PLUG FOR POWER CABLE CONNECTION = 5MM DIAMETER X 14MM DEEP BORE

POWER CABLE SHOWN FOR REFERENCE ONLY

BULKHEAD CLAMP SET AND CENTERING RING ASSEMBLY ARE INCLUDED. FEEDTHROUGH ASSEMBLY TO BE FURNISHED BY USER

QUANTITY FOR ASSEMBLY	CAGE CODE	PART OR IDENTIFYING NO.	NOMENCLATURE OR DESCRIPTION	MATERIAL SPECIFICATION	ZONE	ITEM NO
			PARTS LIST			
			DATE: J. MILLER 08/04/08			
			MATERIALS SCIENCE, INC. Vacuum and Thin Film Technology			
			SUNSOURCE, 90MM WIDE, INTERNAL, KAMLOK, 1 FEEDTHRU			
			DATE: E	00000966		E
			APPLICATION	DO NOT SCALE DRAWING		

INSTALLATION CONTROL DRAWING

000000966