

NOTES: UNLESS OTHERWISE SPECIFIED

- INTERPRET DRAWING IAW THE GLOBAL PROFESSIONAL PUBLICATIONS "DRAWING REQUIREMENTS MANUAL", EIGHTH EDITION.
- INTERPRET DIMENSIONS AND TOLERANCES IAW ANSI Y14.5M - 1982.
- INTERPRET ABBREVIATIONS IAW MIL-STD-12.

4 WARNING:
WATER FITTINGS HAVE A CLEAR ID OF .375 INCHES. USING A SLEEVE OR SIMILAR DEVICE INSIDE THE WATER HOSE MAY CAUSE FLUID RESTRICTIONS AND INTERFERENCE WITH THE NORMAL OPERATION OF THE CATHODE AND THEREFORE IS NOT RECOMMENDED.

5 WATER CHANNELS ARE SYMMETRICAL THROUGHOUT. ORIENTATION OF WATER INLET OR OUTLET IS NOT CRITICAL.

6 WARNING:
MINIMUM HOSE LENGTH OF 60" IS REQUIRED TO ENSURE RESISTIVITY RELATIVE TO ELECTRICAL GROUND WITHIN 50 KILO OHMS. TEST CABLE WITH AN OHM METER OR OTHER SUITABLE DEVICE BEFORE USE.

7 MULTI-CONTACT-USA:
5560 SKYLANE BLVD.
SANTA ROSA, CA 95403
VOICE: (707) 575-7575
FAX: (707) 575-7373
INTERNET:
www.multi-contact-usa.com

8 FOR PROPER INSTALLATION, OPERATION, AND USE OF THE SUNSOURCE PLANAR MAGNETRON CATHODE(S), SEE MATERIALS SCIENCE, INC. DOCUMENT NUMBER 251091.

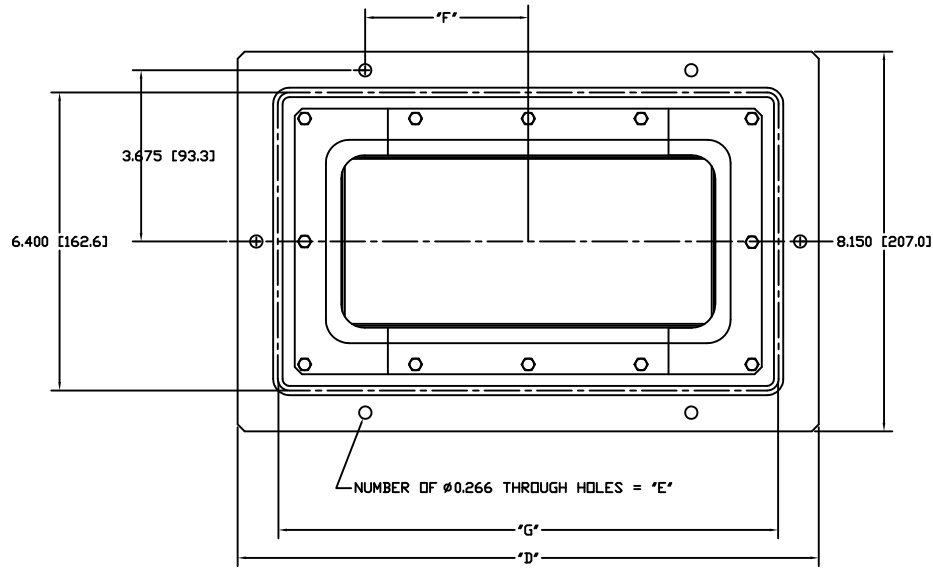
9 P/N 88040-08 IS AVAILABLE FROM:
ALPHA TECHNOLOGIES
320 PREMIER COURT, SUITE 222
FRANKLIN, TN 37067
TEL: (615) 771-6650
HTTP://WWW.ALPHAFITTINGS.COM

10 ALL FASTENERS ARE METRIC.

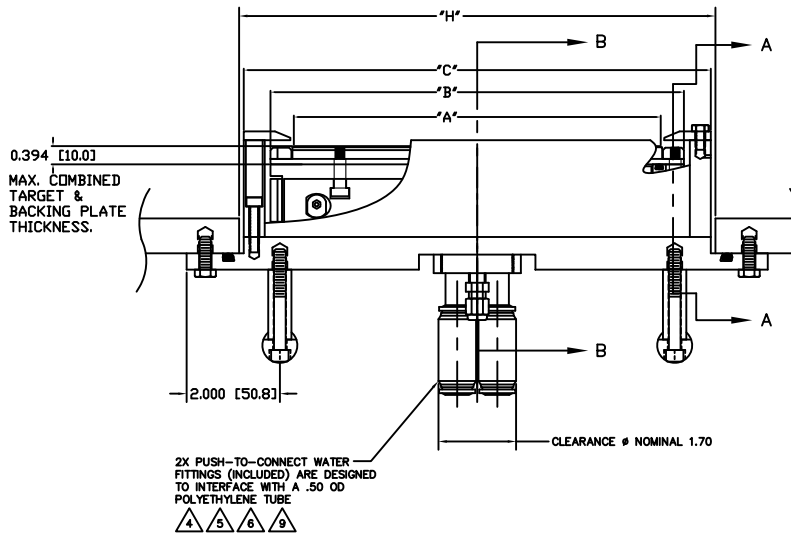
11 DIMENSIONS IN BRACKETS [] DENOTE REFERENCE DIMENSIONS IN MILLIMETERS.

12 TARGET UTILIZATION IS HIGHEST FOR BONDED & CLAMPED TARGETS. DIRECTLY WATER COOLED TARGETS MUST BE SLIGHTLY LONGER & WIDER - THIS EXTRA AREA IS NOT SPUTTERED. THEREFORE TARGET UTILIZATION IS LOWER - BY DEFINITION.

13 ADD .100 [2.54] WHEN CLAMPED TARGETS ARE USED. A TALLER SET OF SIDE ANODE/GROUND SHIELDS ARE REQUIRED TO MAINTAIN THE PROPER DARK SPACE GAP WHEN CLAMPED TARGETS ARE USED. BONDED AND DIRECTLY WATER COOLED TARGETS USE THE STANDARD SIDE SHIELDS SHOWN AND DIMENSIONED.



VACUUM SIDE



REV	DATE	DESCRIPTION	BY	APP'D
C3	A	INITIAL RELEASE	081129	
C3	B	MINOR DIMENSIONAL CHANGES. ADDED DIRECT COOLED TARGET VEW. ADDED NOTE 13.	090811	J. MILLER
C3	B	MINOR DIMENSIONAL CHANGES. NEW DIRECT COOLED TARGET VEW.	100416	J. MILLER

TARGET LENGTH	"A" DIMENSION	"B" DIMENSION	"C" DIMENSION	"D" DIMENSION
200MM	7.874 [200]	8.875 [225,4]	10.025 [254,6]	12.475 [316,9]
250MM	9.846 [250]	10.847 [275,5]	11.997 [304,7]	14.447 [367]
300MM	11.811 [300]	12.712 [325,4]	13.962 [354,6]	16.412 [416,9]
400MM	15.748 [400]	16.749 [425,4]	17.899 [454,6]	20.349 [516,9]
500MM	19.685 [500]	20.586 [522,9]	21.936 [557,2]	24.286 [616,9]

TARGET LENGTH	"E" DIMENSION	"F" DIMENSION	"G" DIMENSION	"H" DIMENSION
200MM	6 EACH	3.500 [88,9]	10.75 [273,1]	"C"+.20 [5,08]
250MM	6 EACH	3.500 [88,9]	12.75 [323,9]	"C"+.20 [5,08]
300MM	8 EACH	6.000 [152,4]	14.75 [374,7]	"C"+.20 [5,08]
400MM	8 EACH	6.000 [152,4]	18.75 [476,3]	"C"+.20 [5,08]
500MM	8 EACH	6.000 [152,4]	22.75 [577,9]	"C"+.20 [5,08]

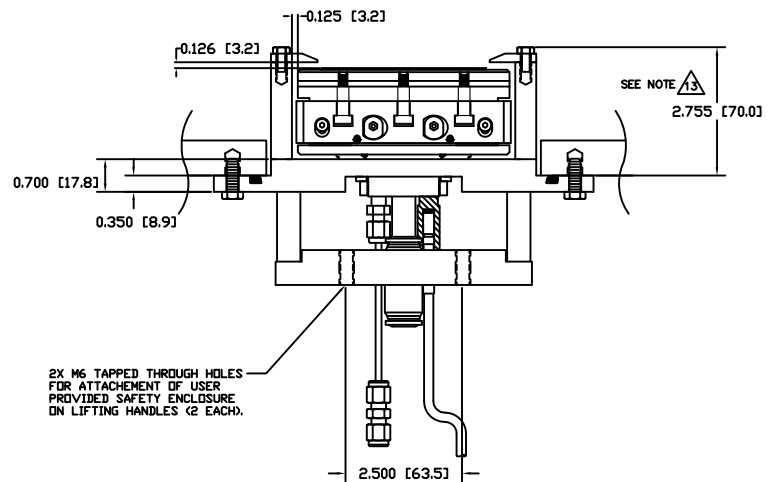
NOTES:

- TARGET DIMENSIONS NOTED IN TABLE ARE FOR COMMON SIZES.
- OTHER TARGET LENGTHS CAN BE ACCOMMODATED.
- LINEAR DIMENSIONS IN TABLE SCALE EXACTLY.

INSTALLATION CONTROL DRAWING

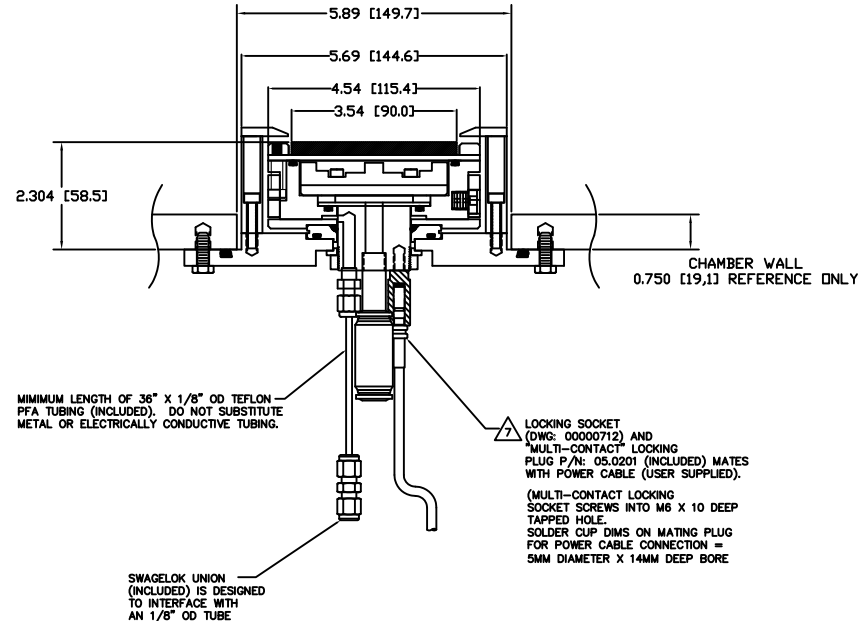
QUANTITY FOR ASSEMBLY	CAGE CODE	PART OR IDENTIFYING NO.	NOMENCLATURE OR DESCRIPTION	MATERIAL SPECIFICATION	ZONE	ITEM NO
			PARTS LIST			
			DATE: J. MILLER 08/11/08			
			MATERIALS SCIENCE, INC. Vacuum and Thin Film Technology			
			SUNSOURCE, 90MM WIDE, FLANGE MOUNT, SHORT			
			DATE: E			
			USED ON			00001047
			APPLICATION	DO NOT SCALE DRAWING	1/1	2

00001047



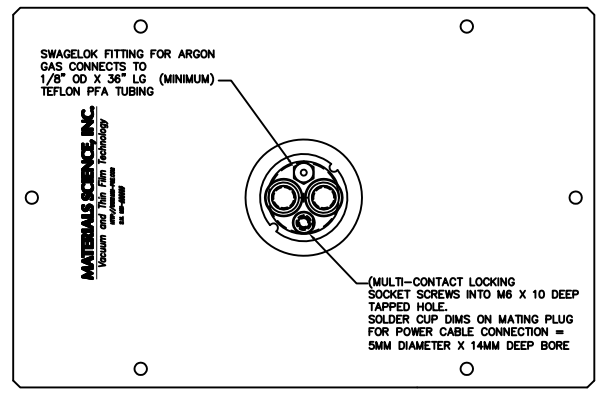
BONDED TARGET ASSEMBLY SHOWN

SECTION A-A

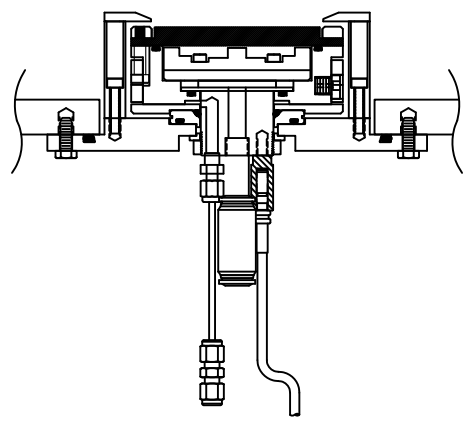


BONDED TARGET ASSEMBLY SHOWN

SECTION B-B



ATMOSPHERE SIDE



DIRECT WATER COOLED TARGET SHOWN