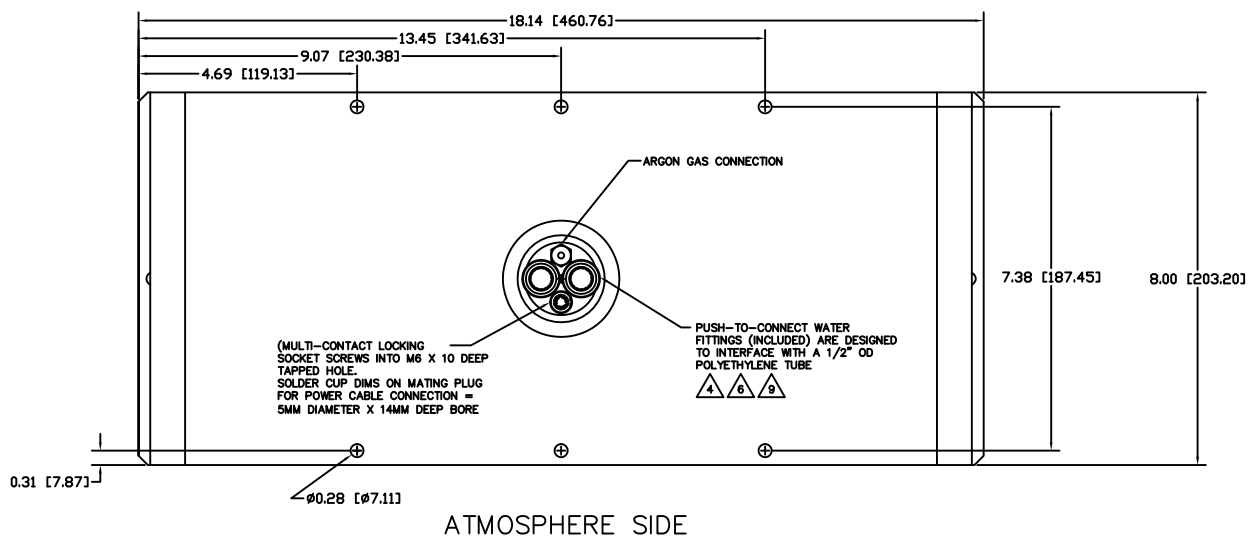


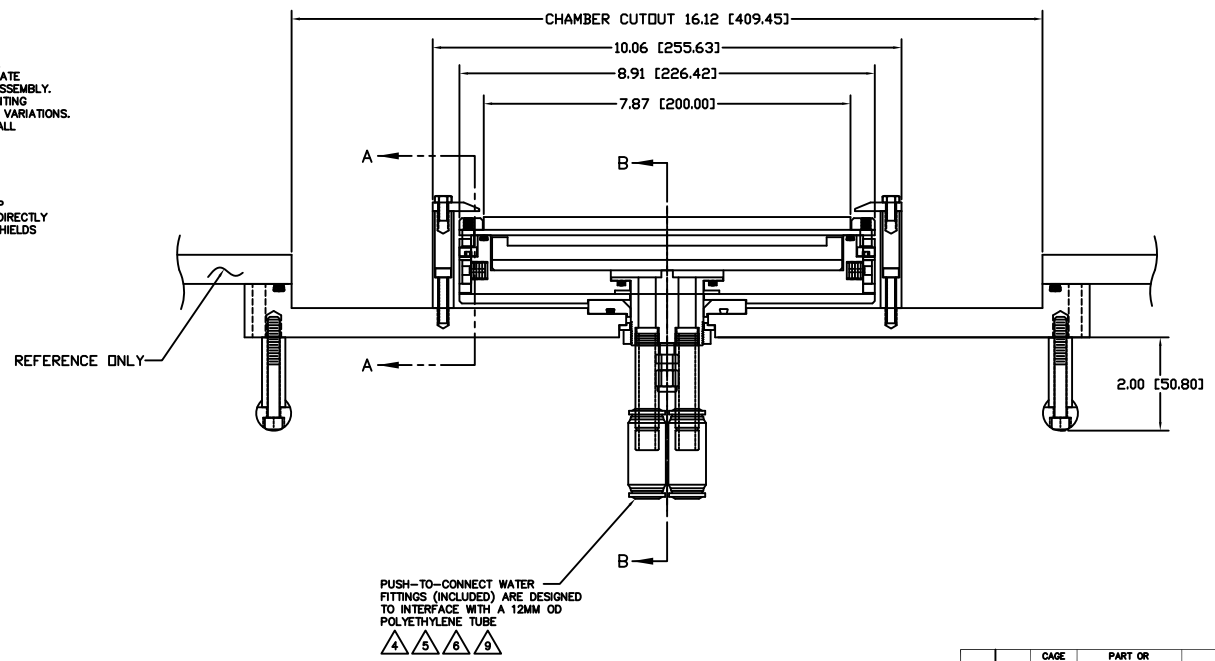
8 7 6 5 4 3 2 1

REVISION		
NO.	REV.	DATE
-	INITIAL RELEASE	090301

- NOTES: UNLESS OTHERWISE SPECIFIED
- INTERPRET DRAWING IAW THE GLOBAL PROFESSIONAL PUBLICATIONS "DRAWING REQUIREMENTS MANUAL", EIGHTH EDITION.
 - INTERPRET DIMENSIONS AND TOLERANCES IAW ANSI Y14.5M - 1982.
 - INTERPRET ABBREVIATIONS IAW MIL-STD-12.
- WARNING:**
 WATER FITTINGS HAVE A CLEAR ID OF .375 INCHES USING A SLEEVE OR SIMILAR DEVICE INSIDE THE WATER HOSE MAY CAUSE FLUID RESTRICTIONS AND INTERFERENCE WITH THE NORMAL OPERATION OF THE CATHODE AND THEREFORE IS NOT RECOMMENDED.
- WARNING:**
 WATER CHANNELS ARE SYMMETRICAL THROUGHOUT, ORIENTATION OF WATER INLET OR OUTLET IS NOT CRITICAL.
- WARNING:**
 MINIMUM HOSE LENGTH OF 60" IS REQUIRED TO ENSURE RESISTIVITY RELATIVE TO ELECTRICAL GROUND WITHIN 50 KILO OHMS. TEST CABLE WITH AN OHM METER OR OTHER SUITABLE DEVICE BEFORE USE.
- MULTI-CONTACT-USA:**
 5560 SKYLANE BLVD.
 SANTA ROSA, CA 95403
 VOICES: (707) 575-7575
 FAX: (707) 575-7373
 INTERNET:
 www.multi-contact-usa.com
- FOR PROPER INSTALLATION, OPERATION, AND USE OF THE SUNSOURCE PLANAR MAGNETRON CATHODE(S), SEE MATERIALS SCIENCE, INC. DOCUMENT NUMBER 251091.
 - P/N 88040-08 IS AVAILABLE FROM:
 ALPHA TECHNOLOGIES
 320 PREMIER COURT, SUITE 222
 FRANKLIN, TN 37067
 TEL: (615) 771-6650
 HTTP://WWW.ALPHAFITTINGS.COM
 - ALL FASTENERS ARE METRIC.



- TO ENSURE A SUCCESSFUL INSTALLATION:
 NOT ALL MRC SYSTEMS ARE CONSTRUCTED THE SAME. BE SURE TO VERIFY THE DESIRED SOURCE TO SUBSTRATE DISTANCE (NOTED AS .81 WITH 10MM THICK TARGET ASSEMBLY. THIS DISTANCE IS CONTROLLED BY VARYING THE MOUNTING FLANGE THICKNESS TO ACCOMMODATE WALL THICKNESS VARIATIONS. THINNER TARGET ASSEMBLIES WILL REDUCE THE OVERALL INSERTION DEPTH PROPORTIONATELY.
- ADD .100 [2.54] WHEN CLAMPED TARGETS ARE USED. A TALLER SET OF SIDE ANODE/GROUND SHIELDS ARE REQUIRED TO MAINTAIN THE PROPER DARK SPACE GAP WHEN CLAMPED TARGETS ARE USED. BONDED AND DIRECTLY WATER COOLED TARGETS USED THE STANDARD SIDE SHIELDS SHOWN AND DIMENSIONED.

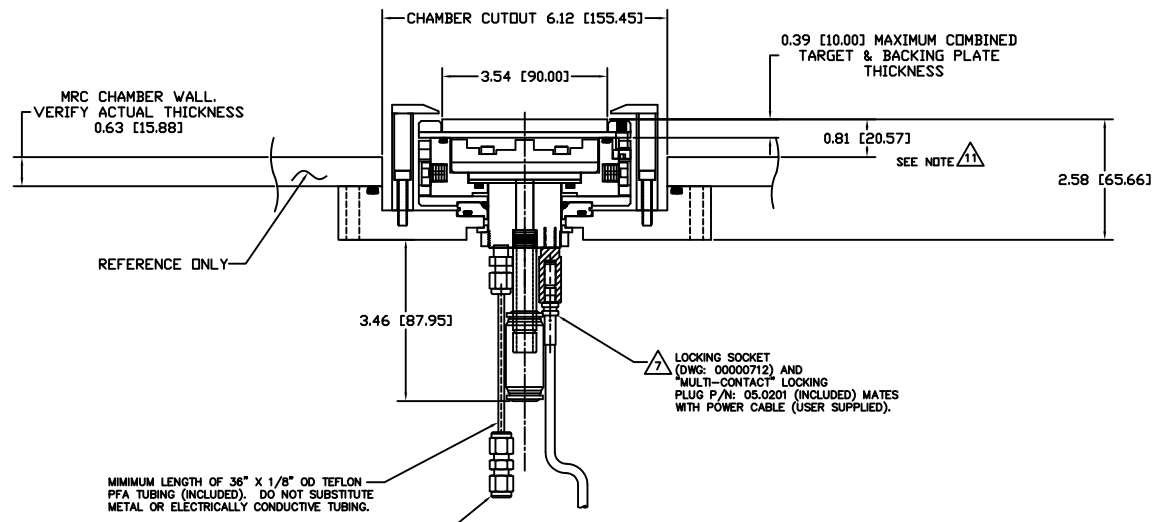


INSTALLATION CONTROL DRAWING

QTY FOR ASSEMBLY	CAGE CODE	PART OR IDENTIFYING NO.	NOMENCLATURE OR DESCRIPTION	MATERIAL SPECIFICATION	ZONE	ITEM NO.
			PARTS LIST			
			JOHN MILLER 09/06/01	MATERIALS SCIENCE, INC. Vacuum and Hot Film Technology		
			SUNSOURCE, 90x200MM KAMLOK STYLE, MRC 600/900 RETROFIT			
						00001084
NEXT ASSEMBLY		USED ON				
APPLICATION			DO NOT SCALE DRAWING			

8 7 6 5 4 3 2 1

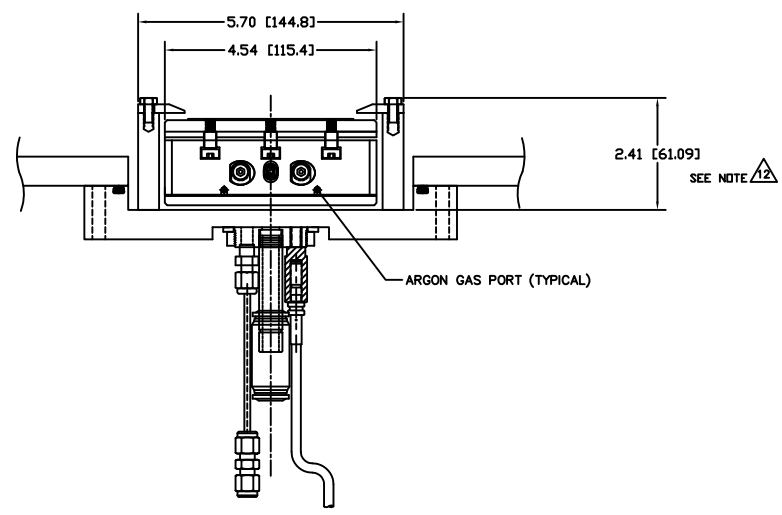
00001084



MINIMUM LENGTH OF 3/8" X 1/8" OD TEFLON PFA TUBING (INCLUDED). DO NOT SUBSTITUTE METAL OR ELECTRICALLY CONDUCTIVE TUBING.

SWAGELOK UNION (INCLUDED) IS DESIGNED TO INTERFACE WITH AN 1/8" OD TUBE

SECTION B-B



SECTION A-A

00001984