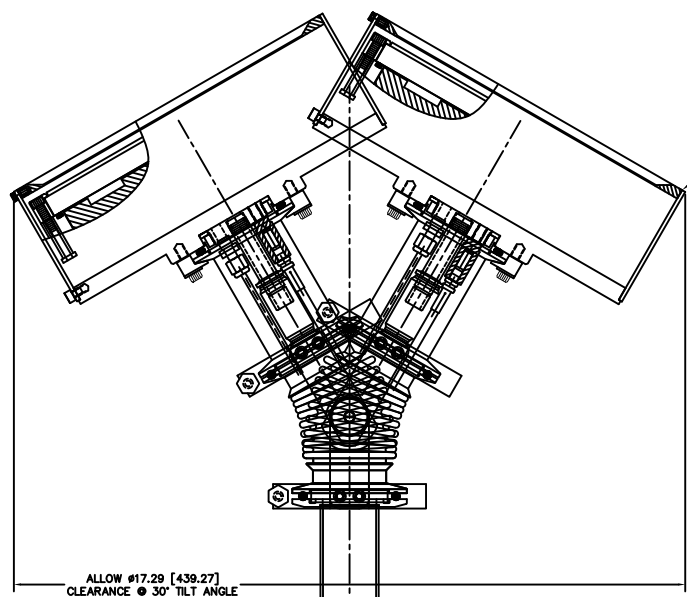


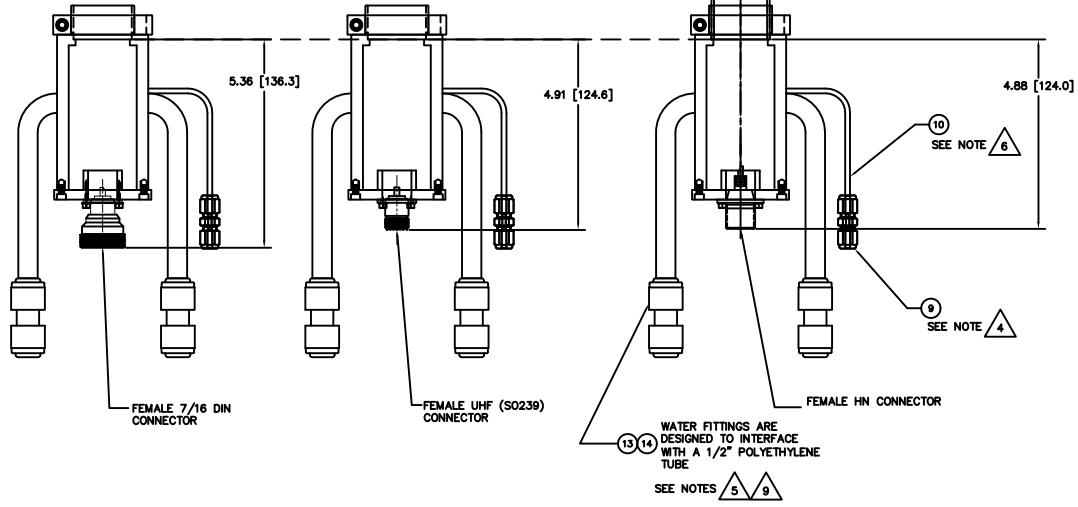
REV	DESCRIPTION	DATE	APP'D
1	INITIAL RELEASE	100826	
A	ADDED UTILITY END CAP 1101027		J. MILLER

- NOTES: UNLESS OTHERWISE SPECIFIED
- INTERPRET DRAWING IAW THE GLOBAL PROFESSIONAL PUBLICATIONS "DRAWING REQUIREMENTS MANUAL", EIGHTH EDITION.
 - INTERPRET DIMENSIONS AND TOLERANCES IAW ANSI Y14.5M - 1982.
 - INTERPRET ABBREVIATIONS IAW MIL-STD-12.
- 4 GAS FITTING (INCLUDED), SWAGELOK (ITEM 9) IS AVAILABLE FROM: [HTTP://WWW.SWAGELOK.COM](http://www.swagelok.com)
- 5 MINIMUM 60" LONG POLYETHYLENE LINES REQUIRED FOR SAFE OPERATION. USER MUST SUPPLY POLYETHYLENE WATER LINES TO MEET THIS REQUIREMENT.
- 6 MINIMUM 36" LONG TEFLON PFA LINE REQUIRED (36" INCLUDED WITH SOURCE) FOR SAFE OPERATION. DO NOT USE METAL GAS LINES TO MEET THIS REQUIREMENT - ELECTRICAL ISOLATION IS NECESSARY.
- 7 TAKE CARE NOT TO DING, SCRATCH OR GOUGE POLISHED SURFACE.
8. SEE MATERIALS SCIENCE, INC. DOCUMENT NO. 251092 FOR PROPER INSTALLATION, OPERATION AND USE OF SUNSOURCE GEN II SPUTTERING SOURCES.
- 9 WATER LINE CONNECTORS (INCLUDED, ITEM 13) ARE AVAILABLE FROM: [HTTP://WWW.JOHNQUEST.COM](http://www.johnguest.com). P/N PP0416W.



4 3 8
SEE DWG 00002144 ASSY FOR TARGET MOUNTING VARIATIONS AND UTILITY CONNECTIONS

ALLOW #17.29 [439.27] CLEARANCE @ 30° TILT ANGLE



FEMALE 7/16 DIN CONNECTOR

FEMALE UHF (S0239) CONNECTOR

FEMALE HN CONNECTOR

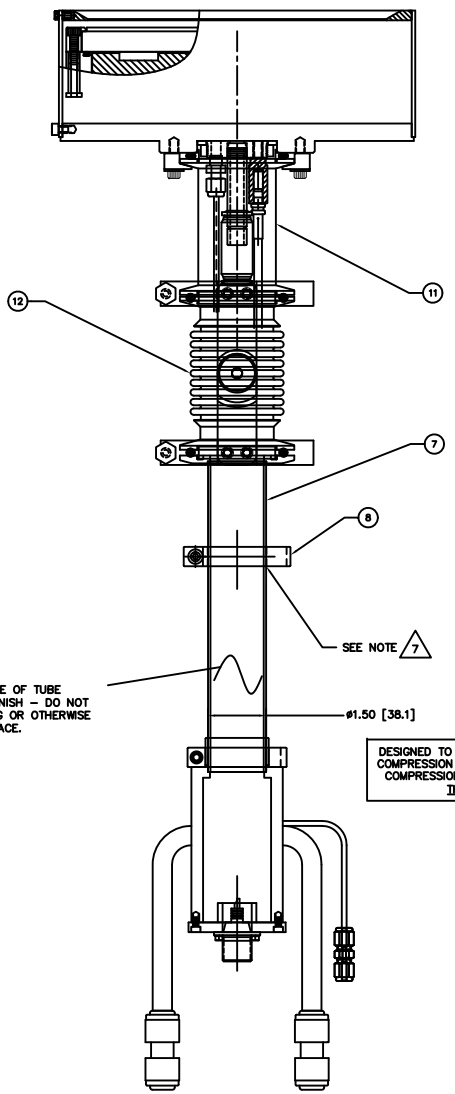
13 14
WATER FITTINGS ARE DESIGNED TO INTERFACE WITH A 1/2" POLYETHYLENE TUBE
SEE NOTES 5 9

QTY	REV	DESCRIPTION	MATERIAL SPECIFICATION	ZONE	ITEM NO	
2	2	2	00000074-2	TUBING, 1/2" OD X 3/8" ID X 18" LONG	POLYETHYLENE	14
2	2	2	00002208	1/2" OD COUPLING, QUICK DISCONNECT	POLYPROPYLENE	13
1	1	1	00002152	TILT MECHANISM ASSEMBLY, KF-50		12
1	1	1	00002156	NIPPLE, KF-50 X 3.50 INCH LONG	304 CRES	11
1	1	1	00000038-1	TUBING, 1/8" OD X 1/16" ID X 36" MINIMUM	TEFLON PFA	10
1	1	1	00000316	FITTING, SWAGELOK, SS-200-6	316 CRES	9
1	1	1	00002155	CLAMP, COMPRESSION, 1.5" TUBE, ASSY		8
1	1	1	00002154	1.5 INCH TUBE FEEDTHROUGH ASSEMBLY	304 CRES	7
1			00002144-3	8" INTERNAL CATHODE (CLAMPED TO MEMBRANE)		6
1			00002144-2	8 INCH INT CATHODE (DIRECT WATER COOLED TGT)		5
		1	00002144-1	8 INCH INTERNAL CATHODE (BONDED TARGET)		4
			00002145-3	8" INTERNAL SOURCE, VARIABLE POSITION & TILT		3
			00002145-2	8" INTERNAL SOURCE, VARIABLE POSITION & TILT		2
			00002145-1	8" INTERNAL SOURCE, VARIABLE POSITION & TILT		1

QTY	REV	DESCRIPTION	MATERIAL SPECIFICATION	ZONE	ITEM NO			
-3	-2	-1	CAGE CODE	PART OR IDENTIFYING NO.	NOMENCLATURE OR DESCRIPTION	MATERIAL SPECIFICATION	ZONE	ITEM NO

APPROVED: J. MILLER 10/08/20
DATE: 10/08/20
SUNSOURCE, 8" DIA. INTERNAL, VARIABLE POSITION & TILT
PARTS LIST
NEXT ASSEMBLY: USED ON: DO NOT SCALE DRAWING
REV: 1/1
00002145
PAGE 2 OF 2

INSTALLATION CONTROL DRAWING



ENTIRE OUTSIDE OF TUBE HAS 32RMS FINISH - DO NOT SCRATCH, DING OR OTHERWISE DAMAGE SURFACE.

DESIGNED TO INTERFACE WITH 1.50" OD TUBE COMPRESSION FITTING ON SYSTEM BASEPLATE. COMPRESSION FITTING MUST HAVE A CLEAR THROUGH ID OF 1.51".

