

REV	DESCRIPTION	DATE	APPROVED
1	INITIAL RELEASE	101223	

- NOTES: UNLESS OTHERWISE SPECIFIED
- INTERPRET DRAWING IAW THE GLOBAL PROFESSIONAL PUBLICATIONS "DRAWING REQUIREMENTS MANUAL", EIGHTH EDITION.
 - INTERPRET DIMENSIONS AND TOLERANCES IAW ANSI Y14.5M - 1982.
 - INTERPRET ABBREVIATIONS IAW MIL-STD-12.
 - METRIC DIMENSIONS NOTED IN BRACKETS " []".

△ TOP AND SIDE GROUND SHIELDS ARE FABRICATED FROM 304 CRES.

△ WARNING:
WATER FITTINGS HAVE A CLEAR ID OF .375 (1/8" OD) OR .50 (3/16" OD) INCHES. USING A SLEEVE OR SIMILAR DEVICE INSIDE THE WATER HOSE MAY CAUSE FLUID RESTRICTIONS AND INTERFERENCE WITH THE NORMAL OPERATION OF THE CATHODE AND THEREFORE IS NOT RECOMMENDED.

△ WATER CHANNELS ARE SYMMETRICAL THROUGHOUT. ORIENTATION OF WATER INLET OR OUTLET IS NOT CRITICAL.

△ WARNING:
MINIMUM HOSE LENGTH OF 60" IS REQUIRED TO ENSURE RESISTIVITY RELATIVE TO ELECTRICAL GROUND WITHIN 50 KΩ OHMS.
TEST CABLE WITH AN OHM METER OR OTHER SUITABLE DEVICE BEFORE USE.

△ MULTI-CONTACT-USA:
2560 SKYLAKE BLVD.
SANTA ROSA, CA 95403
VOICE: (707) 575-7575
FAX: (707) 575-7373
INTERNET:
www.multi-contact-usa.com

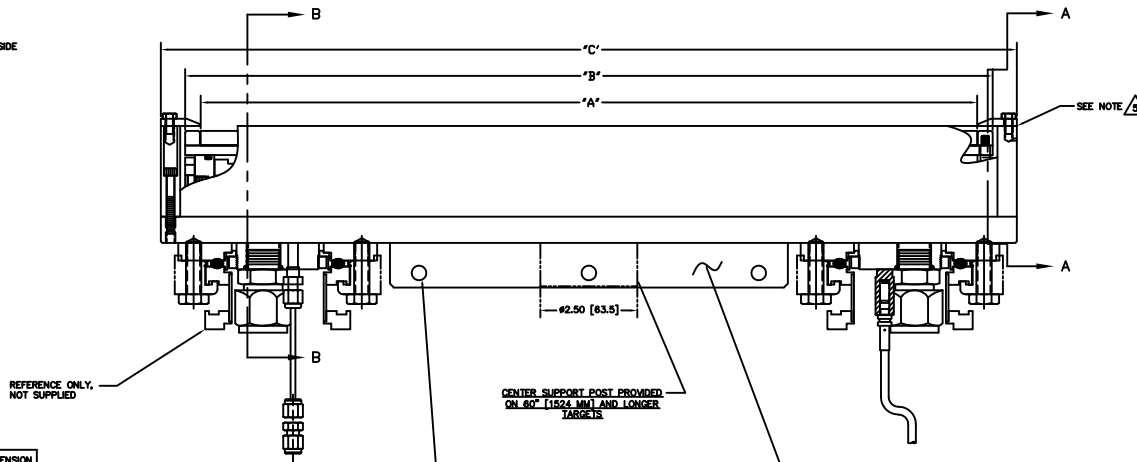
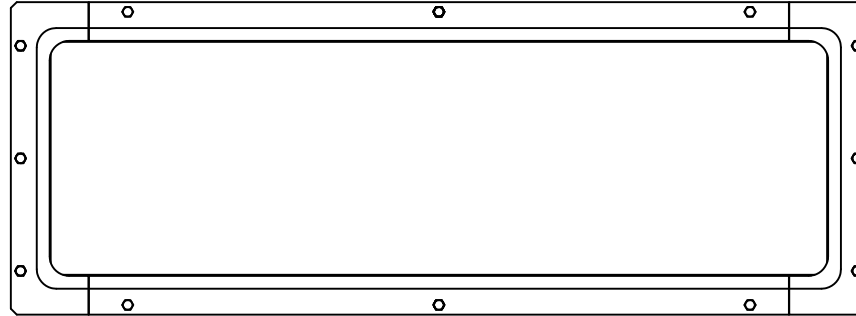
10. FOR PROPER INSTALLATION, OPERATION, AND USE OF THE SUNSOURCE PLANAR MAGNETRON CATHODE(S), SEE MATERIALS SCIENCE, INC. DOCUMENT NUMBER 251091.

△ P/N A100-12-10 IS AVAILABLE FROM:
LENZ, INC.
3301 KLEPINGER ROAD
DAYTON, OH 45406-1842
TEL: (937) 277-8516
HTTP://WWW.LENZINC.COM

12. ALL FASTENERS ARE METRIC.

△ ADD .100 [2.54] WHEN CLAMPED TARGETS ARE USED. A TALLER SET OF SIDE ANODE/GROUND SHIELDS ARE REQUIRED TO MAINTAIN THE PROPER DARK SPACE GAP WHEN CLAMPED TARGETS ARE USED. BONDED AND DIRECTLY WATER COOLED TARGETS USE THE STANDARD SIDE SHIELDS SHOWN AND DIMENSIONED.

14. TARGET UTILIZATION IS HIGHEST FOR BONDED & CLAMPED TARGETS. DIRECTLY WATER COOLED TARGETS MUST BE SLIGHTLY LONGER & WIDER - THIS EXTRA AREA IS NOT SPATTERED. THEREFORE TARGET UTILIZATION IS LOWER - BY DEFINITION.



TARGET LENGTH	"A" DIMENSION	"B" DIMENSION	"C" DIMENSION
15	15.000	15.80	17.05
20	20.000	20.80	22.05
24	24.000	24.80	26.05
30	30.000	30.80	32.05
36	36.000	36.80	38.05
48	48.000	48.80	50.05
60	60.000	60.80	62.05
72	72.000	72.80	74.05

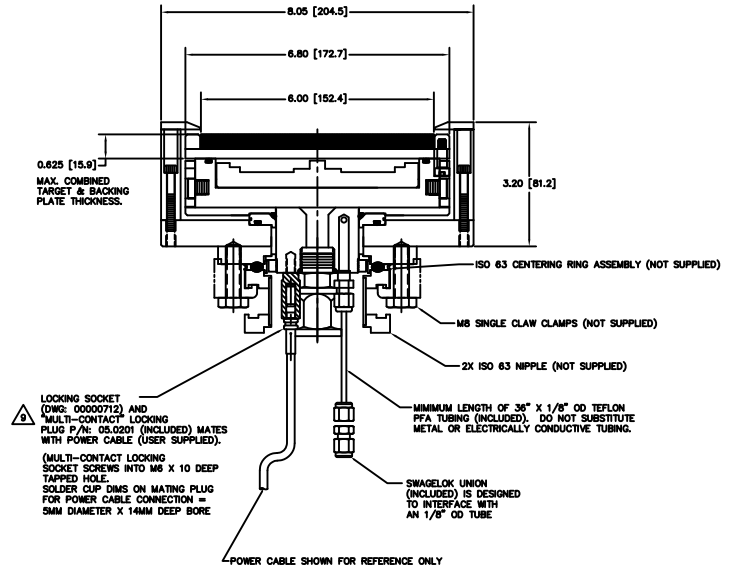
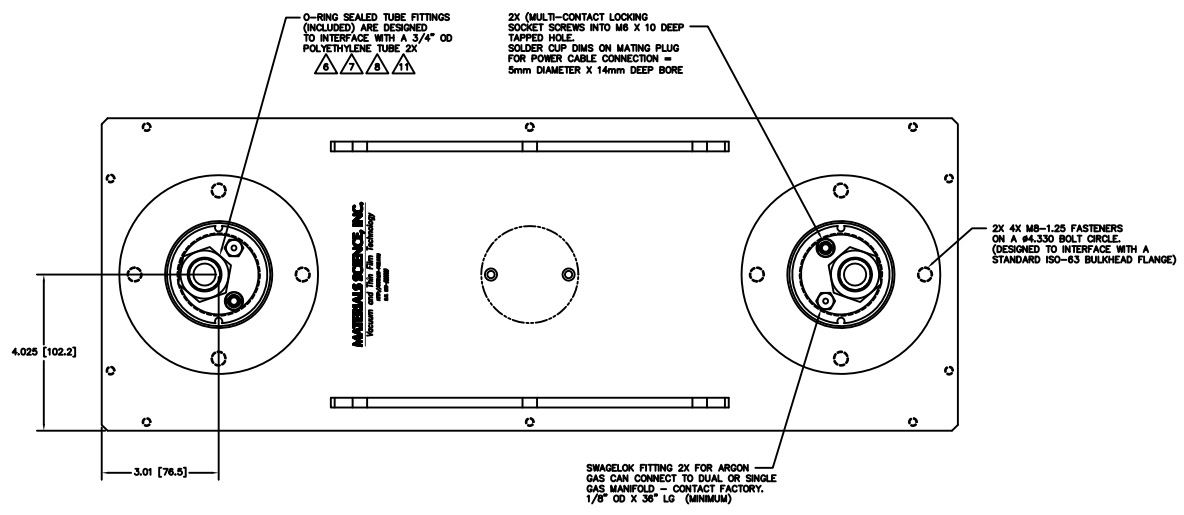
NOTES:
A. TARGET DIMENSIONS NOTED IN TABLE ARE FOR COMMON SIZES.
B. OTHER TARGET LENGTHS CAN BE ACCOMMODATED.
C. LINEAR DIMENSIONS IN TABLE SCALE EXACTLY.

NOTE: FOR LOWER POWER OPERATION - SEE DRAWING 00002625 FOR SOURCES WITH KF-50 FLANGES AND 1/2" OD WATER LINES

INSTALLATION CONTROL DRAWING

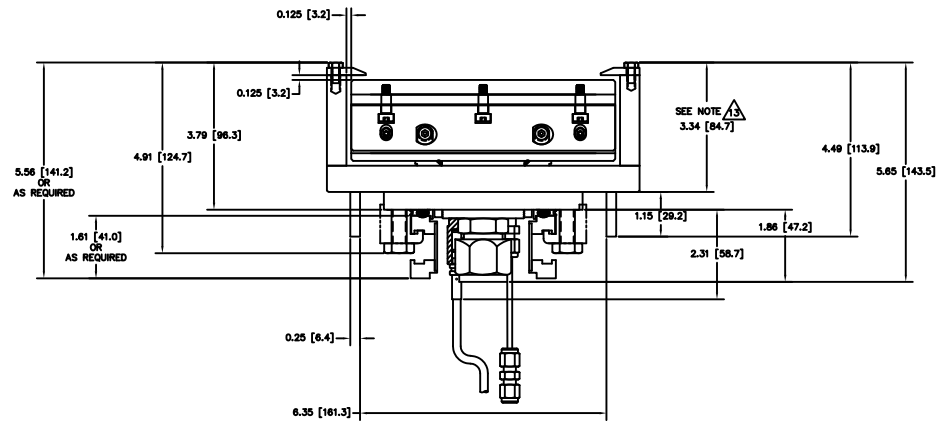
QUANTITY FOR ASSEMBLY	CAGE CODE	PART OR IDENTIFYING NO.	NOMENCLATURE OR DESCRIPTION	MATERIAL SPECIFICATION	ZONE	ITEM NO
			PARTS LIST			
			DATE: 10/18/20 BY: J.MILLER			
			REVISIONS: 1. 10/18/20 J.MILLER 2. 10/18/20 J.MILLER			
			APPROVED: DATE: 10/18/20 BY: J.MILLER			
				MATERIALS SCIENCE, INC. Vacuum and Thin Film Technology Department		
				SUNSOURCE, 6" WIDE, INTERNAL KAMLOK STYLE, 2X FEEDTHRU		
				REV: E		
				DATE CODE: 00002253		
				ISSUE: 1/1		
				SCALE: 1/1		
				APP: 1/1		
				DO NOT SCALE DRAWING		

00002253



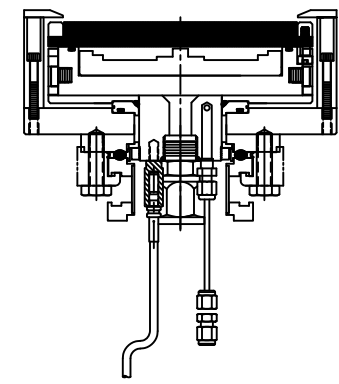
BONDED TARGET ASSEMBLY SHOWN

SECTION B-B



BONDED TARGET ASSEMBLY SHOWN

SECTION A-A



DIRECT WATER COOLED TARGET SHOWN