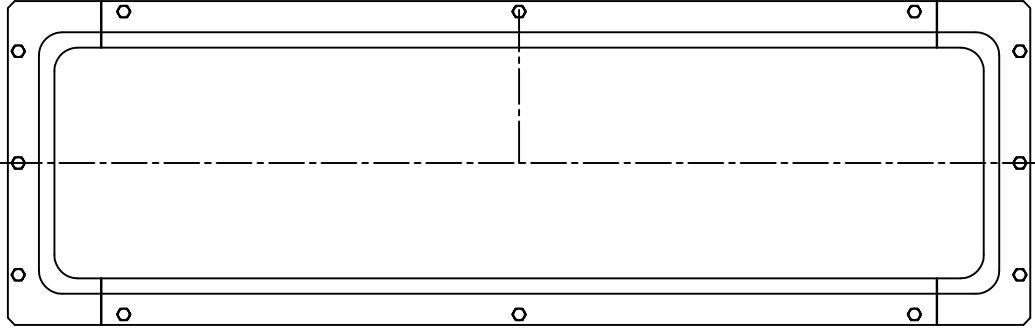
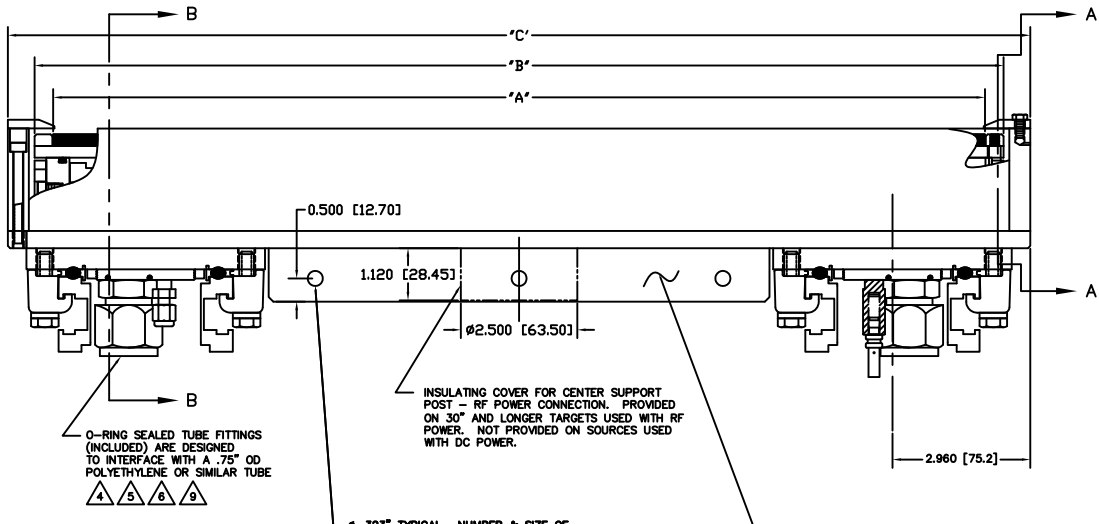


REVISED		DATE	BY
INITIAL RELEASE	110718		

- NOTES: UNLESS OTHERWISE SPECIFIED
- INTERPRET DRAWING IAW THE GLOBAL PROFESSIONAL PUBLICATIONS "DRAWING REQUIREMENTS MANUAL", EIGHTH EDITION.
 - INTERPRET DIMENSIONS AND TOLERANCES IAW ANSI Y14.5M - 1982.
 - INTERPRET ABBREVIATIONS IAW MIL-STD-12.
 - WARNING:**
WATER FITTINGS HAVE A CLEAR ID OF .500" [12,7MM] INCHES. USING A SLEEVE OR SIMILAR DEVICE INSIDE THE WATER HOSE MAY CAUSE FLUID RESTRICTIONS AND INTERFERENCE WITH THE NORMAL OPERATION OF THE CATHODE AND THEREFORE IS NOT RECOMMENDED.
 - WATER CHANNELS ARE SYMMETRICAL THROUGHOUT. ORIENTATION OF WATER INLET OR OUTLET IS NOT CRITICAL.
 - WARNING:**
MINIMUM HOSE LENGTH OF 60" [1524MM] IS REQUIRED TO ENSURE RESISTIVITY RELATIVE TO ELECTRICAL GROUND WITHIN 50 KILO OHMS. TEST CABLE WITH AN OHM METER OR OTHER SUITABLE DEVICE BEFORE USE.
 - MULTI-CONTACT-USA:
5560 SKYLANE BLVD.
SANTA ROSA, CA 95403
VOICES: (707) 575-7575
FAX: (707) 575-7373
INTERNET:
WWW.MULTI-CONTACT-USA.COM
 - FOR PROPER INSTALLATION, OPERATION, AND USE OF THE SUNSOURCE PLANAR MAGNETRON CATHODE(S), SEE MATERIALS SCIENCE, INC. DOCUMENT NUMBER 251091.
 - P/N A100-12-10 IS AVAILABLE FROM:
LENZ, INC.
P.O. BOX 1044
DAYTON, OH 45401-1044
TEL: (937) 277-6516
HTTP://WWW.LENZINC.COM
 - ALL FASTENERS ARE METRIC.
 - DIMENSIONS IN BRACKETS "[]" DENOTE REFERENCE DIMENSIONS IN MILLIMETERS.
 - TARGET UTILIZATION IS HIGHEST FOR BONDED & CLAMPED TARGETS. DIRECTLY WATER COOLED TARGETS MUST BE SLIGHTLY LONGER & WIDER - THIS EXTRA AREA IS NOT SPUTTERED. THEREFORE TARGET UTILIZATION IS LOWER - BY DEFINITION.
 - ADD .100 [2.54] WHEN CLAMPED TARGETS ARE USED. A TALLER SET OF SIDE ANODE/GROUND SHIELDS ARE REQUIRED TO MAINTAIN THE PROPER DARK SPACE GAP WHEN CLAMPED TARGETS ARE USED. BONDED AND DIRECTLY WATER COOLED TARGETS USE THE STANDARD SIDE SHIELDS SHOWN AND DIMENSIONED.



TOP VIEW



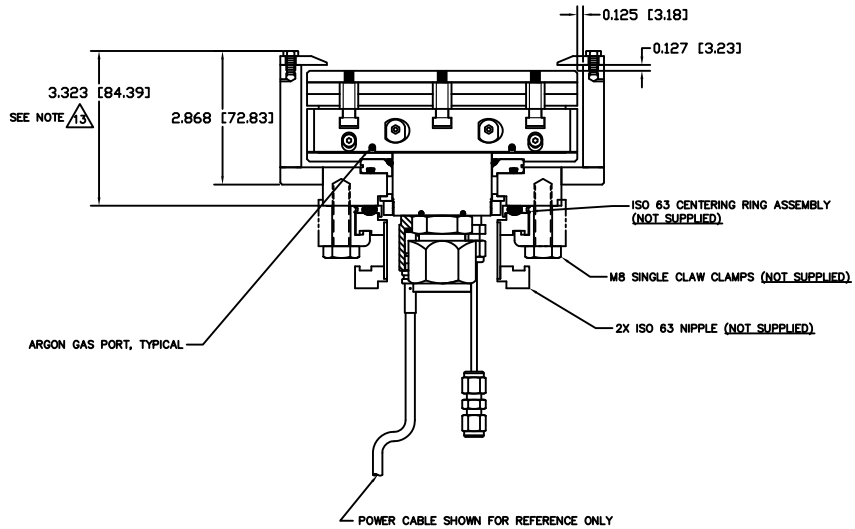
SIDE VIEW

TARGET LENGTH	"A" DIMENSION	"B" DIMENSION	"C" DIMENSION
20 [508,0]	20.00 [508,0]	20.80 [528,3]	21.95 [884,5]
25 [635,0]	25.00 [635,0]	25.80 [655,3]	26.95 [884,5]
30 [762,0]	30.00 [762,0]	30.80 [782,3]	31.95 [811,5]
36 [914,4]	36.00 [914,4]	36.80 [934,7]	37.95 [963,9]
40 [1016,0]	40.00 [1016,0]	40.80 [1036,3]	41.95 [1065,5]
48 [1219,2]	48.00 [1219,2]	48.80 [1239,5]	49.95 [1268,7]
60 [1524,0]	60.00 [1524,0]	60.80 [1544,3]	61.95 [1573,5]

- NOTES:
- TARGET DIMENSIONS NOTED IN TABLE ARE FOR COMMON SIZES.
 - OTHER TARGET LENGTHS CAN BE ACCOMMODATED.
 - LINEAR DIMENSIONS IN TABLE SCALE EXACTLY.

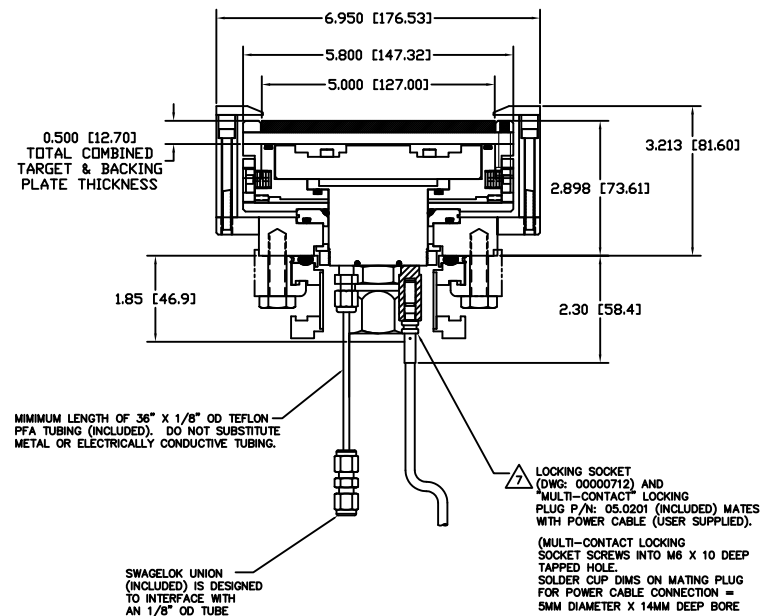
INSTALLATION CONTROL DRAWING

QUANTITY FOR ASSEMBLY	CAGE CODE	PART OR IDENTIFYING NO.	NOMENCLATURE OR DESCRIPTION	MATERIAL SPECIFICATION	ZONE	ITEM NO
			PARTS LIST			
			JOHN KELLER 1/1/07/10			
			MATERIALS SCIENCE, INC. Vacuum and Thin Film Technology			
			SUNSOURCE, 5" WIDE INTERNAL, KAMLOK STYLE, LONG			
						00002450
						1/1
						2



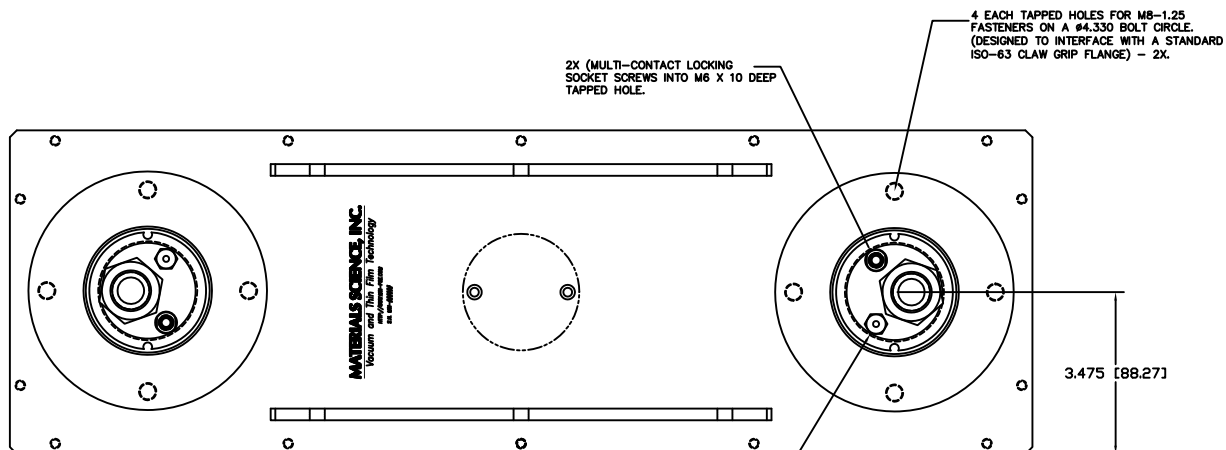
BONDED TARGET ASSEMBLY SHOWN

SECTION A-A

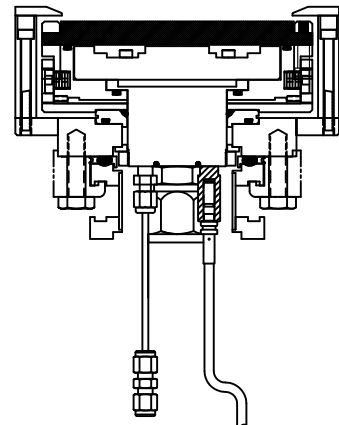


BONDED TARGET ASSEMBLY SHOWN

SECTION B-B



BOTTOM VIEW



DIRECT WATER COOLED TARGET SHOWN

SWAGelok FITTING (2X) FOR ARGON GAS CAN CONNECT TO DUAL OR SINGLE GAS MANIFOLD - CONTACT FACTORY. 1/8" OD X 36" LG (MINIMUM). DO NOT SUBSTITUTE METAL TUBING FOR TEFLON PFA TUBING PROVIDED.