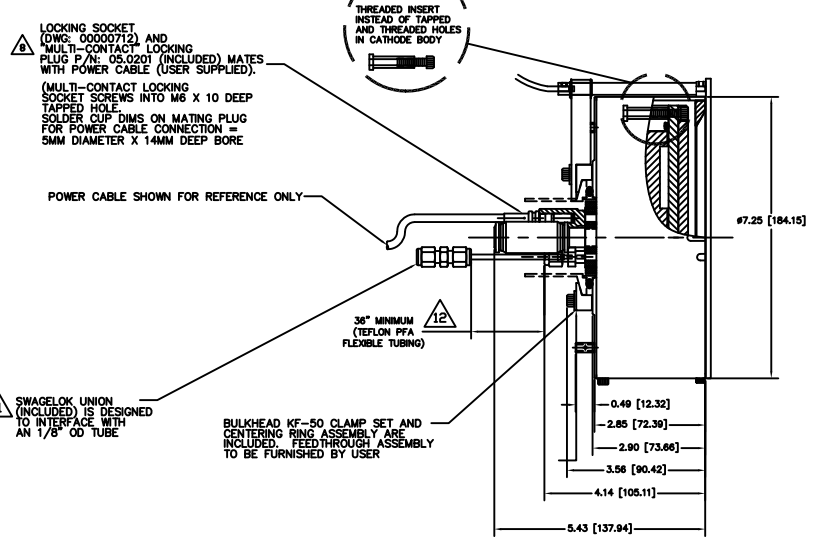
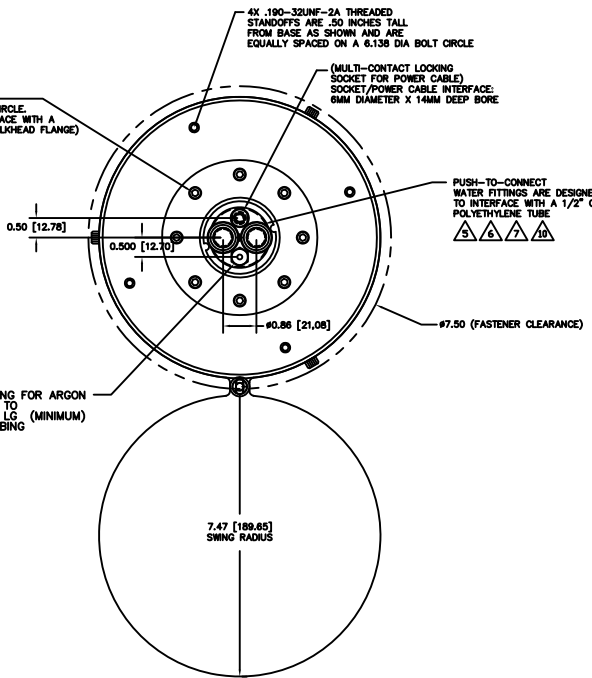
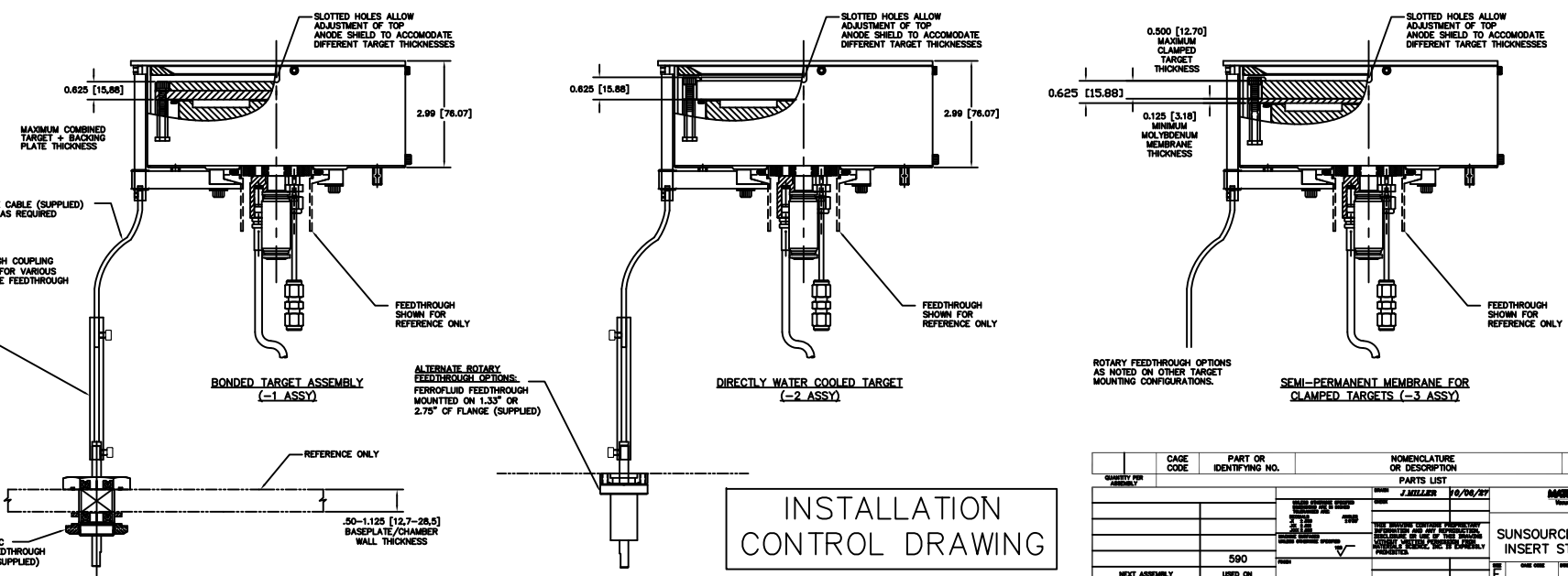


REV	DATE	DESCRIPTION
INITIAL RELEASE	12/06/20	

- NOTES: UNLESS OTHERWISE SPECIFIED
- INTERPRET DRAWING IAW THE GLOBAL PROFESSIONAL PUBLICATIONS "DRAWING REQUIREMENTS MANUAL", EIGHTH EDITION.
 - INTERPRET DIMENSIONS AND TOLERANCES IAW ANSI Y14.5M - 1982.
 - INTERPRET ABBREVIATIONS IAW MIL-STD-12.
 - MASS OF CATHODE FULLY ASSEMBLED IS 22 LBS., DRY.
- WARNING:**
 WATER FITTINGS HAVE A CLEAR ID OF .375 INCHES. USING A SLEEVE OR SIMILAR DEVICE INSIDE THE WATER HOSE MAY CAUSE FLUID RESTRICTIONS AND INTERFERENCE WITH THE NORMAL OPERATION OF THE CATHODE AND THEREFORE IS NOT RECOMMENDED.
- WARNING:**
 WATER CHANNELS ARE SYMMETRICAL THROUGHOUT. ORIENTATION OF WATER INLET OR OUTLET IS NOT CRITICAL.
- WARNING:**
 MINIMUM HOSE LENGTH OF 60" IS REQUIRED TO ENSURE RESISTIVITY RELATIVE TO ELECTRICAL GROUND WITHIN 50 KILO OHMS. TEST CABLE WITH AN OHM METER OR OTHER SUITABLE DEVICE BEFORE USE.
- WARNING:**
 MULTI-CONTACT USA: 5560 SKYLANE BLVD. SANTA ROSA, CA 95403 VOICE: (707) 575-7575 FAX: (707) 575-7375 INTERNET: WWW.MULTICONTACT-USA.COM
- FOR PROPER INSTALLATION, OPERATION, AND USE OF THE SUNSOURCE PLANAR MAGNETRON CATHODE(S) SEE MATERIALS SCIENCE, INC. DOCUMENT NUMBER 251092.
 - P/N 88040-08 IS AVAILABLE FROM:
 ALPHA TECHNOLOGIES
 320 PREMIER COURT, SUITE 222
 FRANKLIN, TN 37067
 TEL: (615) 771-6650
 HTTP://WWW.ALPHAFITTINGS.COM
 - GAS FITTING (INCLUDED), SWAGelok IS AVAILABLE FROM:
 HTTP://WWW.SWAGELOK.COM
 - MINIMUM 36" LONG TEFLON PFA LINE REQUIRED (36" INCLUDED WITH SOURCE) FOR SAFE OPERATION. DO NOT USE METAL GAS LINES TO MEET THIS REQUIREMENT - ELECTRICAL ISOLATION IS NECESSARY.



TARGET MOUNTING VARIATIONS



INSTALLATION CONTROL DRAWING

QUANTITY PER ASSEMBLY	CAGE CODE	PART OR IDENTIFYING NO.	NOMENCLATURE OR DESCRIPTION	MATERIAL SPECIFICATION	ZONE	ITEM NO
			PARTS LIST			
			DATE: J. MILLER 10/04/21			
			MATERIALS SCIENCE, INC. Vacuum and Thin Film Technology			
			SUNSOURCE, 6" DIA. INTERNAL, INSERT STYLE WITH SHUTTER			
		580				00002592
			DATE CODE: E			
			REVISION: 1/1			