

REV	DESCRIPTION	DATE	APPROVED
1	INITIAL RELEASE	120803	

- NOTES: UNLESS OTHERWISE SPECIFIED
1. INTERPRET DRAWING IAW THE GLOBAL PROFESSIONAL PUBLICATIONS "DRAWING REQUIREMENTS MANUAL", EIGHTH EDITION.
 2. INTERPRET DIMENSIONS AND TOLERANCES IAW ANSI Y14.5M - 1982.
 3. INTERPRET ABBREVIATIONS IAW MIL-STD-12.
 4. METRIC DIMENSIONS NOTED IN BRACKETS 'T'.

⚠ TOP AND SIDE GROUND SHIELDS ARE FABRICATED FROM 304 CRES.

⚠ WARNING: WATER FITTINGS HAVE A CLEAR ID OF .375 (1/2" OD) INCHES. USING A SLEEVE OR SIMILAR DEVICE INSIDE THE WATER HOSE MAY CAUSE FLUID RESTRICTIONS AND INTERFERENCE WITH THE NORMAL OPERATION OF THE CATHODE AND THEREFORE IS NOT RECOMMENDED.

⚠ WATER CHANNELS ARE SYMMETRICAL THROUGHOUT. ORIENTATION OF WATER INLET OR OUTLET IS NOT CRITICAL.

⚠ WARNING: MINIMUM HOSE LENGTH OF 60" IS REQUIRED TO ENSURE RESISTIVITY RELATIVE TO ELECTRICAL GROUND WITHIN 50 KILO OHMS. TEST CABLE WITH AN OHM METER OR OTHER SUITABLE DEVICE BEFORE USE.

⚠ MULTI-CONTACT-USA: 5560 SKYLINE BLVD. SANTA ROSA, CA 95403 VOICE: (707) 575-7575 FAX: (707) 575-7373 INTERNET: WWW.MULTI-CONTACT-USA.COM

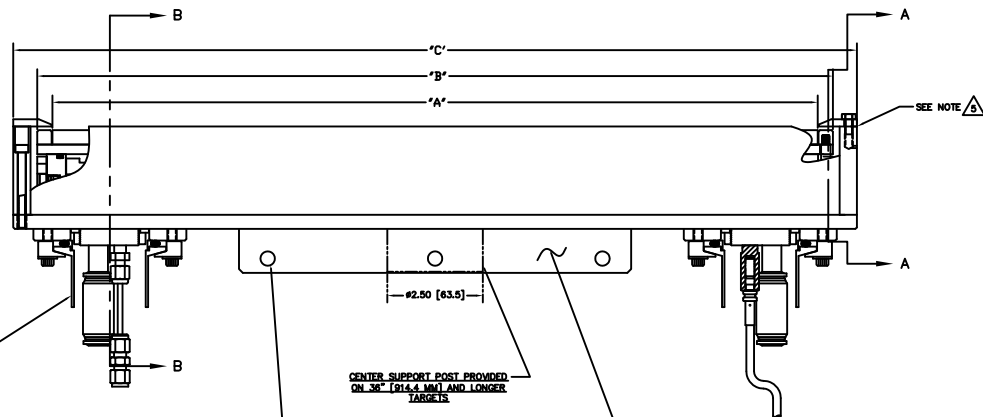
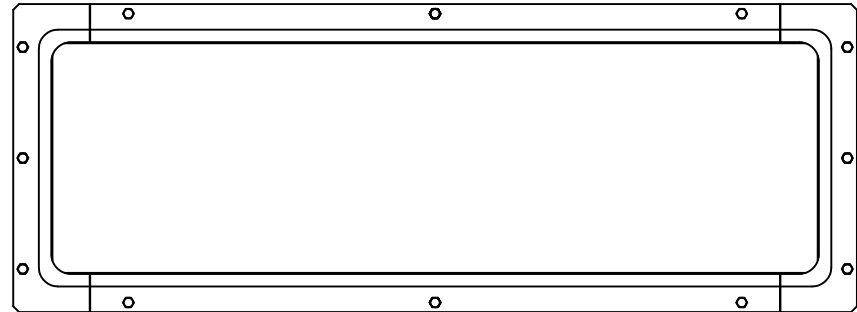
10. FOR PROPER INSTALLATION, OPERATION, AND USE OF THE SUNSOURCE PLANAR MAGNETRON CATHODE(S) SEE MATERIALS SCIENCE, INC. DOCUMENT NUMBER 251091.

⚠ P/N 89040-9 IS AVAILABLE FROM: ALPHA TECHNOLOGIES 330 PRIMER COURT FRANKLIN, TN 37067 TEL: (615) 771-6850 HTTP://WWW.ALPHAFITTINGS.COM

12. ALL FASTENERS ARE METRIC.

⚠ ADD .100 [2.54] WHEN CLAMPED TARGETS ARE USED. A TALLER SET OF SIDE GROUND SHIELDS ARE REQUIRED TO MAINTAIN THE PROPER DARK SPACE GAP WHEN CLAMPED TARGETS ARE USED. BONDED AND DIRECTLY WATER COOLED TARGETS USE THE STANDARD SIDE SHIELDS SHOWN AND DIMENSIONED.

14. TARGET UTILIZATION IS HIGHEST FOR BONDED & CLAMPED TARGETS. DIRECTLY WATER COOLED TARGETS MUST BE SLIGHTLY LONGER & WIDER - THIS EXTRA AREA IS NOT SPATTERED. THEREFORE TARGET UTILIZATION IS LOWER - BY DEFINITION.



TARGET LENGTH	"A" DIMENSION	"B" DIMENSION	"C" DIMENSION
15	15.000	15.80	17.05
20	20.000	20.80	22.05
24	24.000	24.80	26.05
30	30.000	30.80	32.05
36	36.000	36.80	38.05

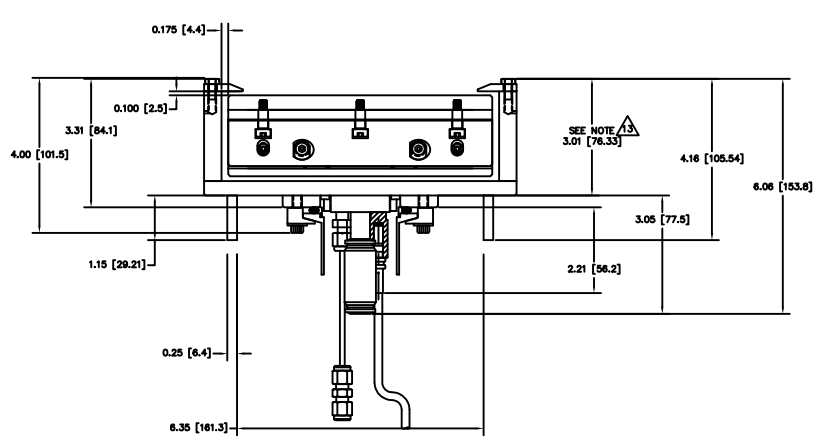
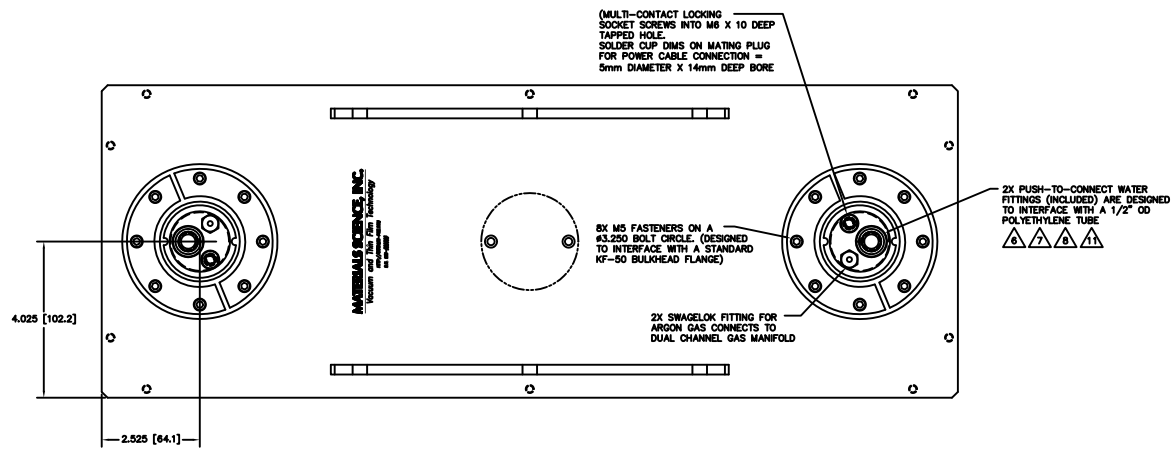
- NOTES:
- A. TARGET DIMENSIONS NOTED IN TABLE ARE FOR COMMON SIZES.
 - B. OTHER TARGET LENGTHS CAN BE ACCOMMODATED.
 - C. LINEAR DIMENSIONS IN TABLE SCALE EXACTLY.

NOTE: FOR HIGH POWER OPERATION - SEE DRAWING 00002253 FOR SOURCES WITH ISO 63 FLANGES AND 3/4" OD WATER LINES

INSTALLATION CONTROL DRAWING

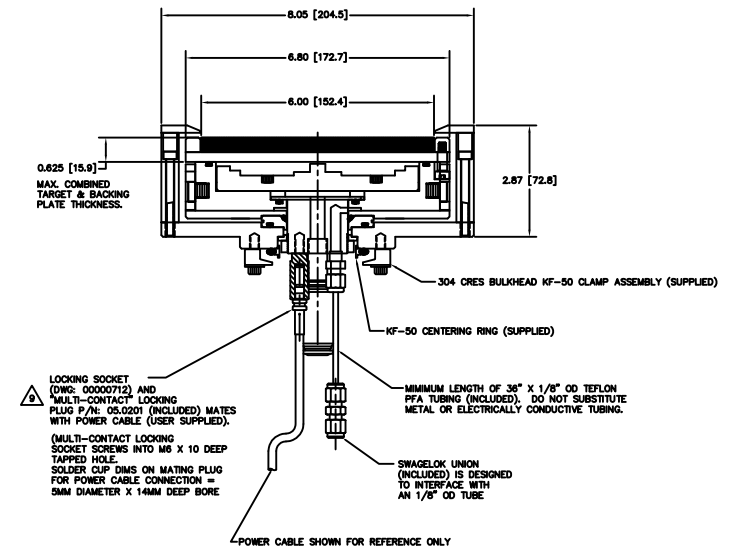
SUBMITTER OR ASSEMBLY	CAGE CODE	PART OR IDENTIFYING NO.	NOMENCLATURE OR DESCRIPTION	MATERIAL SPECIFICATION	ZONE	ITEM NO								
			<table border="1"> <thead> <tr> <th colspan="2">PARTS LIST</th> <th>DATE</th> <th>BY</th> </tr> </thead> <tbody> <tr> <td>2</td> <td>KILLER</td> <td>1/2/06/06</td> <td></td> </tr> </tbody> </table>	PARTS LIST		DATE	BY	2	KILLER	1/2/06/06				
PARTS LIST		DATE	BY											
2	KILLER	1/2/06/06												
			<table border="1"> <thead> <tr> <th colspan="2">SUNSOURCE PLANAR MAGNETRON CATHODE(S)</th> <th>DATE</th> <th>BY</th> </tr> </thead> <tbody> <tr> <td>1</td> <td>00002625</td> <td></td> <td></td> </tr> </tbody> </table>	SUNSOURCE PLANAR MAGNETRON CATHODE(S)		DATE	BY	1	00002625					
SUNSOURCE PLANAR MAGNETRON CATHODE(S)		DATE	BY											
1	00002625													
				SUNSOURCE, 6" WIDE, INTERNAL KAMLOK STYLE, 2X FEEDTHRU										
				00002625										
				1/1		2								

00002625



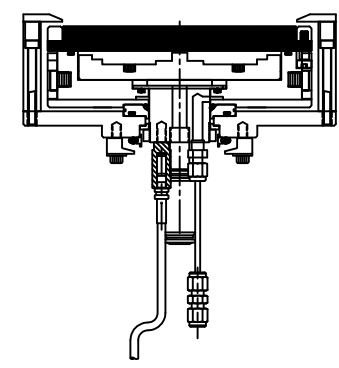
BONDED TARGET ASSEMBLY SHOWN

SECTION A-A



BONDED TARGET ASSEMBLY SHOWN

SECTION B-B



DIRECT WATER COOLED TARGET SHOWN

00002625