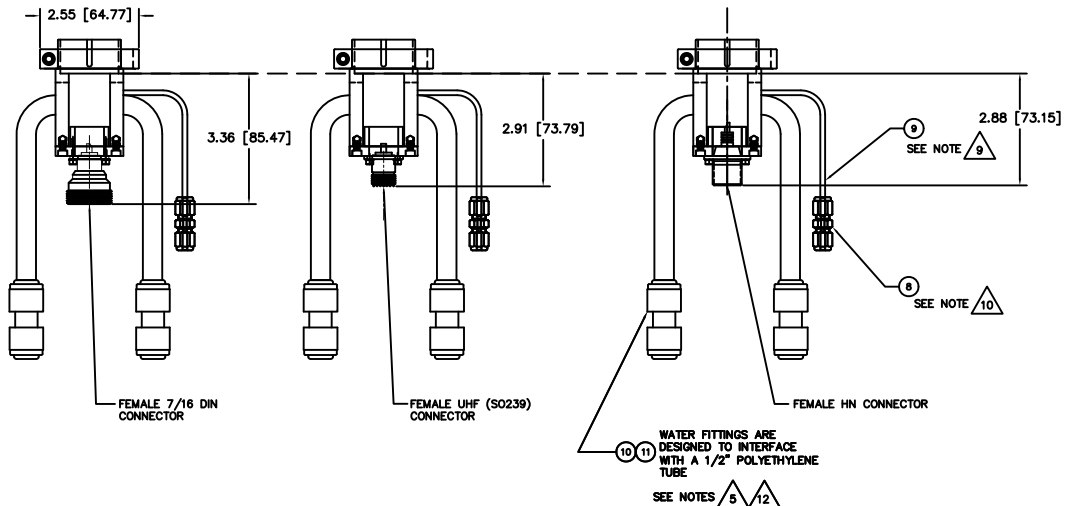
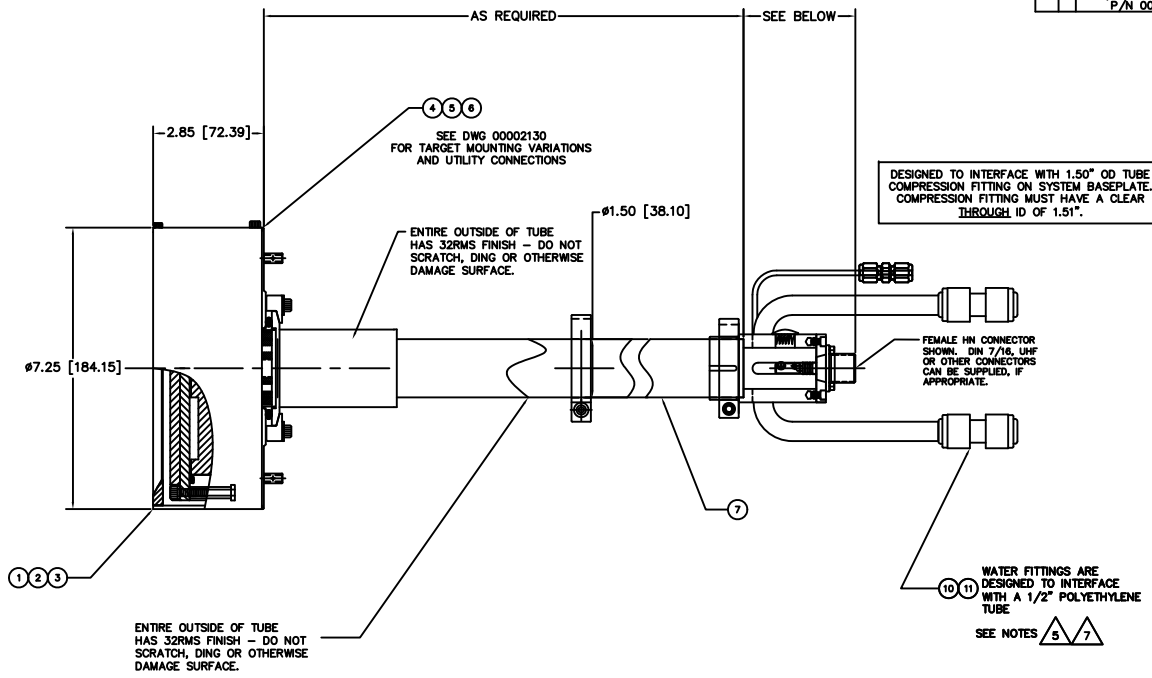


- NOTES: UNLESS OTHERWISE SPECIFIED
- INTERPRET DRAWING IAW THE GLOBAL PROFESSIONAL PUBLICATIONS "DRAWING REQUIREMENTS MANUAL", EIGHTH EDITION.
  - INTERPRET DIMENSIONS AND TOLERANCES IAW ANSI Y14.5M - 1982.
  - INTERPRET ABBREVIATIONS IAW MIL-STD-12.
  - MASS OF CATHODE FULLY ASSEMBLED IS 23 LBS., DRY.
- WARNING:** WATER FITTINGS HAVE A CLEAR ID OF .375 INCHES. USING A SLEEVE OR SIMILAR DEVICE INSIDE THE WATER HOSE MAY CAUSE FLUID RESTRICTIONS AND INTERFERENCE WITH THE NORMAL OPERATION OF THE CATHODE AND THEREFORE IS NOT RECOMMENDED.
- WARNING:** WATER CHANNELS ARE SYMMETRICAL THROUGHOUT. ORIENTATION OF WATER INLET OR OUTLET IS NOT CRITICAL.
- WARNING:** MINIMUM HOSE LENGTH OF 60" IS REQUIRED TO ENSURE RESISTIVITY RELATIVE TO ELECTRICAL GROUND WITHIN 50 KILO OHMS. TEST CABLE WITH AN OHM METER OR OTHER SUITABLE DEVICE BEFORE USE.
- FOR PROPER INSTALLATION, OPERATION, AND USE OF THE SUNSOURCE PLANAR MAGNETRON CATHODE(S) SEE MATERIALS SCIENCE, INC. DOCUMENT NUMBER 251092.
  - MINIMUM 36" LONG TEFLON PFA LINE REQUIRED (36" INCLUDED WITH SOURCE) FOR SAFE OPERATION. DO NOT USE METAL GAS LINES TO MEET THIS REQUIREMENT - ELECTRICAL ISOLATION IS NECESSARY.
  - GAS FITTING (INCLUDED), SWAGELOK (ITEM 8) IS AVAILABLE FROM: [HTTP://WWW.SWAGELOK.COM](http://www.swagelok.com)
  - TAKE CARE NOT TO DING, SCRATCH OR GOUGE POLISHED SURFACE.
  - WATER LINE CONNECTORS (INCLUDED, ITEM 10) ARE AVAILABLE FROM: [HTTP://WWW.JOHNQUEST.COM](http://www.johnguest.com). P/N PP0416W.



QTY	QTY PER ASSEMBLY	QTY PER SUBASSEMBLY	CAGE CODE	PART OR IDENTIFYING NO.	NOMENCLATURE OR DESCRIPTION	MATERIAL SPECIFICATION	ZONE	ITEM NO
								14
								12
2	2	2		0000074-2	TUBING, 1/2" OD X 3/8" ID X 18" LONG	POLYETHYLENE		11
2	2	2		00002208	1/2" OD COUPLING, QUICK DISCONNECT	POLYPROPYLENE		10
1	1	1	9	00000038-1	TUBING, 1/8" OD X 1/16" ID X 36" MINIMUM	TEFLON PFA		9
1	1	1	10	00000316	FITTING, SWAGELOK, SS-200-6	316 CRES		8
1	1	1	11	00002941	1.5 INCH TUBE FEEDTHROUGH ASSEMBLY	304 CRES		7
1				00002130-3	6" INTERNAL CATHODE (CLAMPED TO MEMBRANE)			6
1				00002130-2	6 INCH INT CATHODE (DIRECT WATER COOLED TGT)			5
				00002130-1	6 INCH INTERNAL CATHODE (BONDED TARGET)			4
				00002703-3	6" INTERNAL SOURCE, VARIABLE POSITION			3
				00002703-2	6" INTERNAL SOURCE, VARIABLE POSITION			2
				00002703-1	6" INTERNAL SOURCE, VARIABLE POSITION			1

APPROVED: J. MILLER 10/10/00

DATE: 10/10/00

DESIGNED BY: J. MILLER

DATE: 10/10/00

REVISIONS:

REV	DESCRIPTION	DATE	BY
A	CHANGED ITEM 7 FROM P/N 00002608 TO P/N 00002941	17/01/12	J. MILLER

INITIAL RELEASE 151009

DATE: 10/10/00

BY: J. MILLER

00002703

00002703

1/1

INSTALLATION CONTROL DRAWING