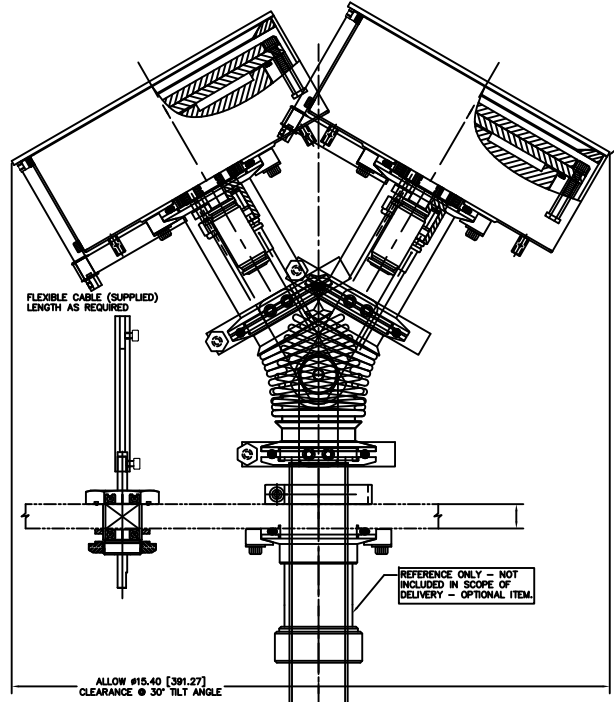
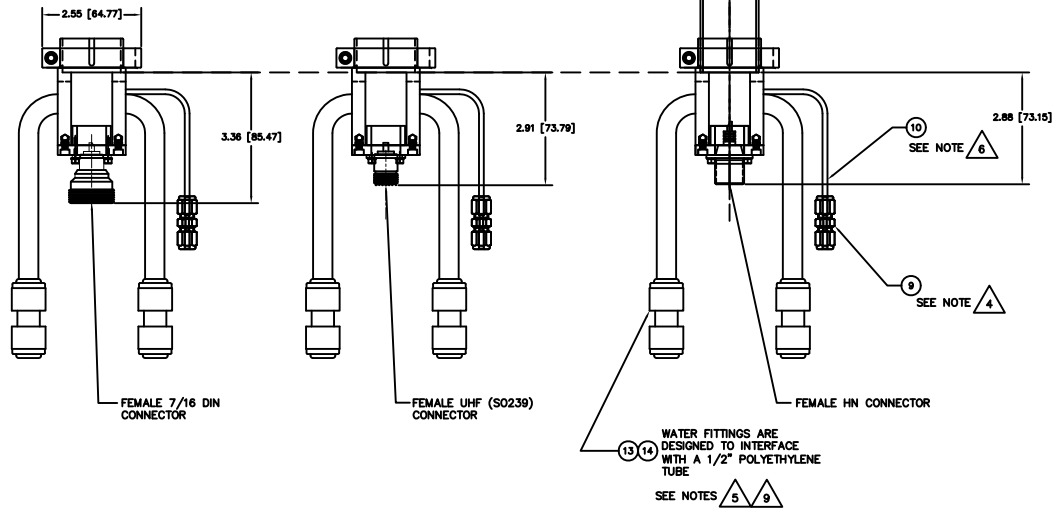


REV	DATE	DESCRIPTION	BY	APP'D
1	150107	INITIAL RELEASE		

- NOTES: UNLESS OTHERWISE SPECIFIED
- INTERPRET DRAWING IAW THE GLOBAL PROFESSIONAL PUBLICATIONS "DRAWING REQUIREMENTS MANUAL", EIGHTH EDITION.
 - INTERPRET DIMENSIONS AND TOLERANCES IAW ANSI Y14.5M - 1982.
 - INTERPRET ABBREVIATIONS IAW MIL-STD-12.
 - GAS FITTING (INCLUDED), SWAGelok (ITEM 9) IS AVAILABLE FROM: [HTTP://WWW.SWAGelok.COM](http://www.swagelok.com)
 - MINIMUM 60" LONG POLYETHYLENE LINES REQUIRED FOR SAFE OPERATION. USER MUST SUPPLY POLYETHYLENE WATER LINES TO MEET THIS REQUIREMENT.
 - MINIMUM 36" LONG TEFLON PFA LINE REQUIRED (36" INCLUDED WITH SOURCE) FOR SAFE OPERATION. DO NOT USE METAL GAS LINES TO MEET THIS REQUIREMENT - ELECTRICAL ISOLATION IS NECESSARY.
 - TAKE CARE NOT TO DING, SCRATCH OR GOUGE POLISHED SURFACE.
 - SEE MATERIALS SCIENCE, INC. DOCUMENT NO. 251092 FOR PROPER INSTALLATION, OPERATION AND USE OF SUNSOURCE GEN II SPUTTERING SOURCES.
 - WATER LINE CONNECTORS (INCLUDED, ITEM 13) ARE AVAILABLE FROM: [HTTP://WWW.JOHNGUEST.COM](http://www.johnguest.com). P/N PP0416W.



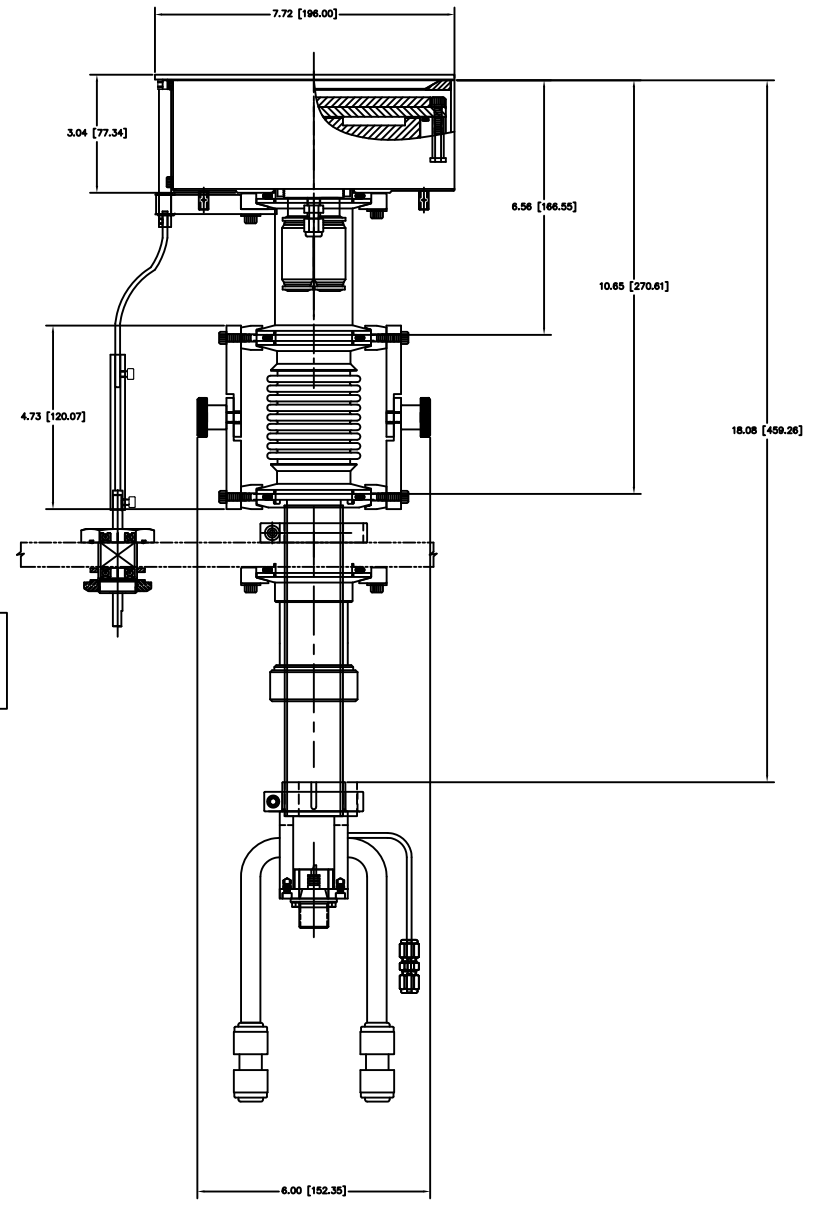
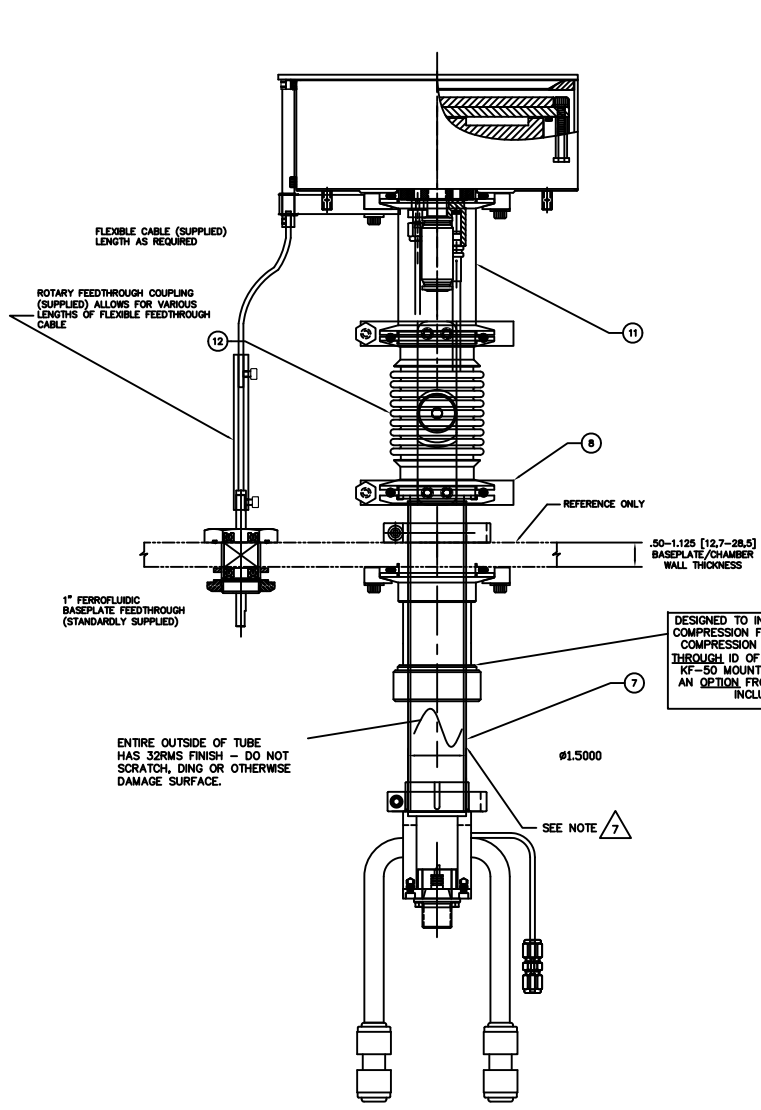
SEE DWG 00002130 FOR TARGET MOUNTING VARIATIONS AND UTILITY CONNECTIONS



QTY	REV	DESCRIPTION	MATERIAL SPECIFICATION	ZONE	ITEM NO	
2	2	2	00000074-2	TUBING, 1/2" OD X 3/8" ID X 18" LONG	POLYETHYLENE	14
2	2	2	00002208	1/2" OD COUPLING, QUICK DISCONNECT	POLYPROPYLENE	13
1	1	1	00002152	TILT MECHANISM ASSEMBLY, KF-50		12
1	1	1	00002156	NIPPLE, KF-50 X 3.50 INCH LONG	304 CRES	11
1	1	1	00000038-1	TUBING, 1/8" OD X 1/16" ID X 36" MINIMUM	TEFLON PFA	10
1	1	1	00000316	FITTING, SWAGelok, SS-200-6	316 CRES	9
1	1	1	00002155	CLAMP, COMPRESSION, 1.5" TUBE, ASSY		8
1	1	1	00002154	1.5 INCH TUBE FEEDTHROUGH ASSEMBLY	304 CRES	7
1			00002130-3	6" INTERNAL CATHODE (CLAMPED TO MEMBRANE)		6
1	1		00002130-2	6 INCH INT CATHODE (DIRECT WATER COOLED TGT)		5
1	1		00002130-1	6 INCH INTERNAL CATHODE (BONDED TARGET)		4
			00002376-3	6" INTERNAL SOURCE, VARIABLE POSITION & TILT		3
			00002376-2	6" INTERNAL SOURCE, VARIABLE POSITION & TILT		2
			00002376-1	6" INTERNAL SOURCE, VARIABLE POSITION & TILT		1

INSTALLATION CONTROL DRAWING

QUANTITY FOR ASSEMBLY	-3	-2	-1	CAGE CODE	PART OR IDENTIFYING NO.	NOMENCLATURE OR DESCRIPTION	MATERIAL SPECIFICATION	ZONE	ITEM NO
PARTS LIST						MATERIALS SCIENCE, INC. Vacuum and Thin Film Technology			
NEXT ASSEMBLY						SUNSOURCE, 6" DIA. INTERNAL, VARIABLE HEIGHT, SHUTTER, TILT			
APPLICATION						DATE: 1/1/01			



DESIGNED TO INTERFACE WITH 1.50" OD TUBE COMPRESSION FITTING ON SYSTEM BASEPLATE. COMPRESSION FITTING MUST HAVE A CLEAR THROUGH ID OF 1.52". ADAPTOR FITTING WITH KF-50 MOUNTING FLANGE IS AVAILABLE AS AN OPTION FROM MATERIALS SCIENCE. NOT INCLUDED AS STANDARD.

ENTIRE OUTSIDE OF TUBE HAS 32RMS FINISH - DO NOT SCRATCH, DING OR OTHERWISE DAMAGE SURFACE.

1" FERROFLUIDIC BASEPLATE FEEDTHROUGH (STANDARDLY SUPPLIED)

Ø1.5000

SEE NOTE 7

REFERENCE ONLY

.50-1.125 [12.7-28.5] BASEPLATE/CHAMBER WALL THICKNESS

00002860