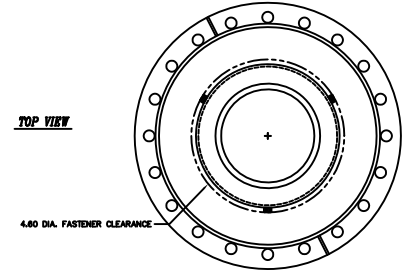
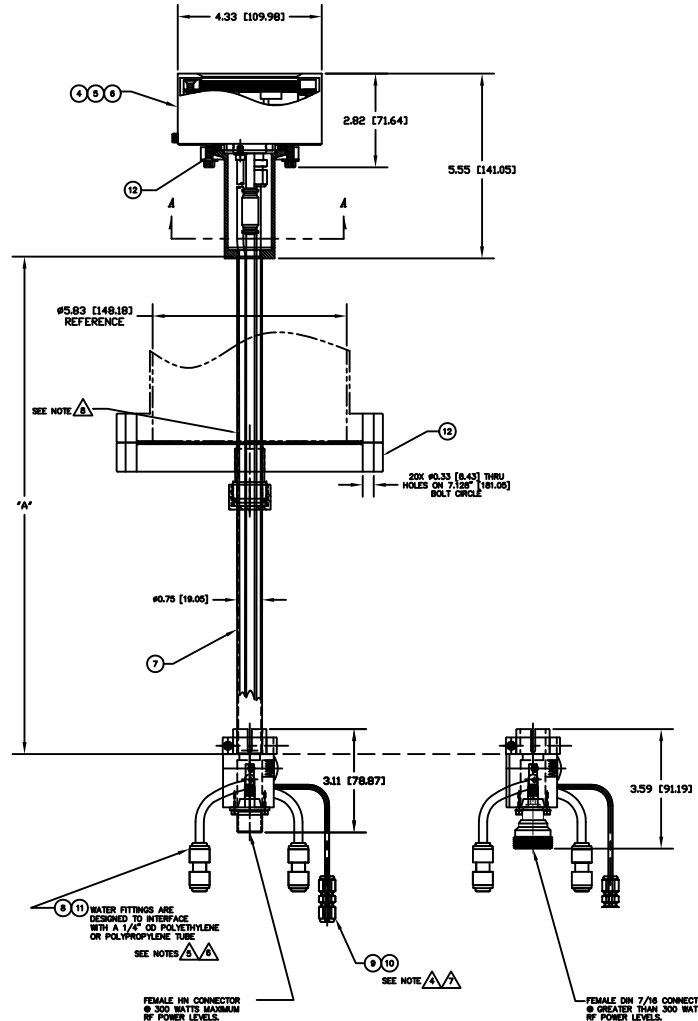


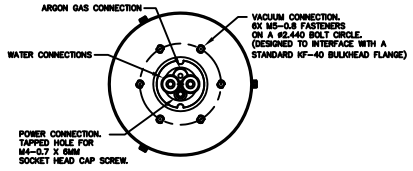
REV	DESCRIPTION	DATE	APPROVED
INITIAL RELEASE		180516	

- NOTES: UNLESS OTHERWISE SPECIFIED
- INTERPRET DRAWING IAW THE GLOBAL PROFESSIONAL PUBLICATIONS "DRAWING REQUIREMENTS MANUAL", EIGHTH EDITION.
 - INTERPRET DIMENSIONS AND TOLERANCES IAW ANSI Y14.5M - 1982.
 - INTERPRET ABBREVIATIONS IAW MIL-STD-12.
- ⚠ GAS FITTING (INCLUDED), SWAGelok (ITEM 9) IS AVAILABLE FROM: [HTTP://WWW.SWAGELOK.COM](http://www.swagelok.com)
 - ⚠ MINIMUM 60" LONG POLYETHYLENE LINES REQUIRED FOR SAFE OPERATION. USER MUST SUPPLY ADDITIONAL 42" LONG POLYETHYLENE WATER LINES TO MEET THIS REQUIREMENT. DO NOT SUBSTITUTE METAL WATER FITTINGS FOR ITEM 8.
 - ⚠ WATER LINE CONNECTORS (INCLUDED, ITEM 8) ARE AVAILABLE FROM: [HTTP://WWW.JOHNQUEST.COM](http://www.johnguest.com)
 - ⚠ MINIMUM 36" LONG TEFLON PFA LINE REQUIRED (36" INCLUDED WITH SOURCE) FOR SAFE OPERATION. DO NOT USE METAL GAS LINES TO MEET THIS REQUIREMENT - ELECTRICAL ISOLATION IS NECESSARY.
 - ⚠ TAKE CARE NOT TO DING, SCRATCH OR GOUGE POLISHED SURFACE.
- SEE MATERIALS SCIENCE, INC. DOCUMENT NO. 251011 FOR PROPER INSTALLATION, OPERATION AND USE OF POLARIS SPUTTERING SOURCES.
 - MASS OF SPUTTERING SOURCE ASSEMBLY FULLY ASSEMBLED IS 15 LBS., DRY.



-1, -2, AND -3 ASSY SHOWN

DASH NO	Dim "A"
-1	12"
-2	18"
-3	24"



INSTALLATION CONTROL DRAWING

QTY	PART OR IDENTIFYING NO.	NOMENCLATURE OR DESCRIPTION	MATERIAL SPECIFICATION	ZONE	ITEM NO			
					18			
					17			
					16			
					15			
					14			
1	1	1	00002910	ADAPTOR ASSEMBLY, 8" OD CF TO 3/4" OD TUBE	304 CRES	13		
3	3	3	00000100-3	CENTERING RING, KF-40		12		
1	1	1	⚠ 00000074-1	TUBING, 1/4" OD X .170" ID X 18"	POLYETHYLENE	11		
1	1	1	⚠ 00000038-1	TUBING, 1/8" OD X 1/16" ID X 36" MINIMUM	TEFLON PFA	10		
1	1	1	⚠ 00000316	FITTING, SWAGelok, SS-200-6	316 CRES	9		
2	2	2	00000281-1	1/4 INCH OD COUPLING, QUICK CONNECT	P/N C1040BW	8		
1	1	1	00000789	3/4 INCH TUBE FEEDTHROUGH ASSEMBLY	304 CRES	7		
1			00002085-3	3 INCH INTERNAL CATHODE (CLAMPED TARGET)		6		
1	1		00002085-2	3 INCH INT CATHODE (DIRECT WATER COOLED TGT)		5		
1	1		00002085-1	3 INCH INTERNAL CATHODE (BONDED TARGET)		4		
			00002907-3	3" POLARIS SOURCE, VARIABLE POSITION		3		
			00002907-2	3" POLARIS SOURCE, VARIABLE POSITION		2		
			00002907-1	3" POLARIS SOURCE, VARIABLE POSITION		1		
-3	-2	-1	CASE CODE	PART OR IDENTIFYING NO.	NOMENCLATURE OR DESCRIPTION	MATERIAL SPECIFICATION	ZONE	ITEM NO

APPROVED: J. MILLER 10/06/10

DATE: 10/06/10

3" POLARIS, VARIABLE POSITION ON 8" CF FLANGE

00002907

1/1