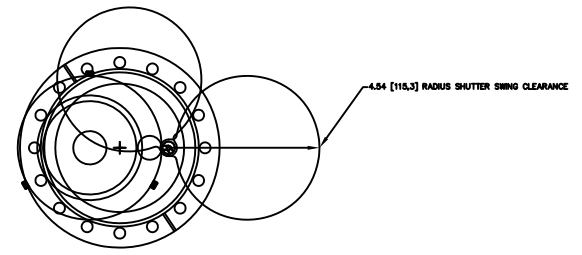
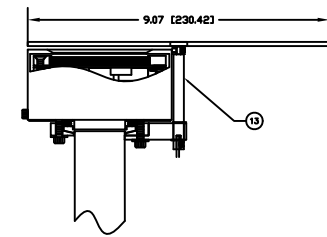
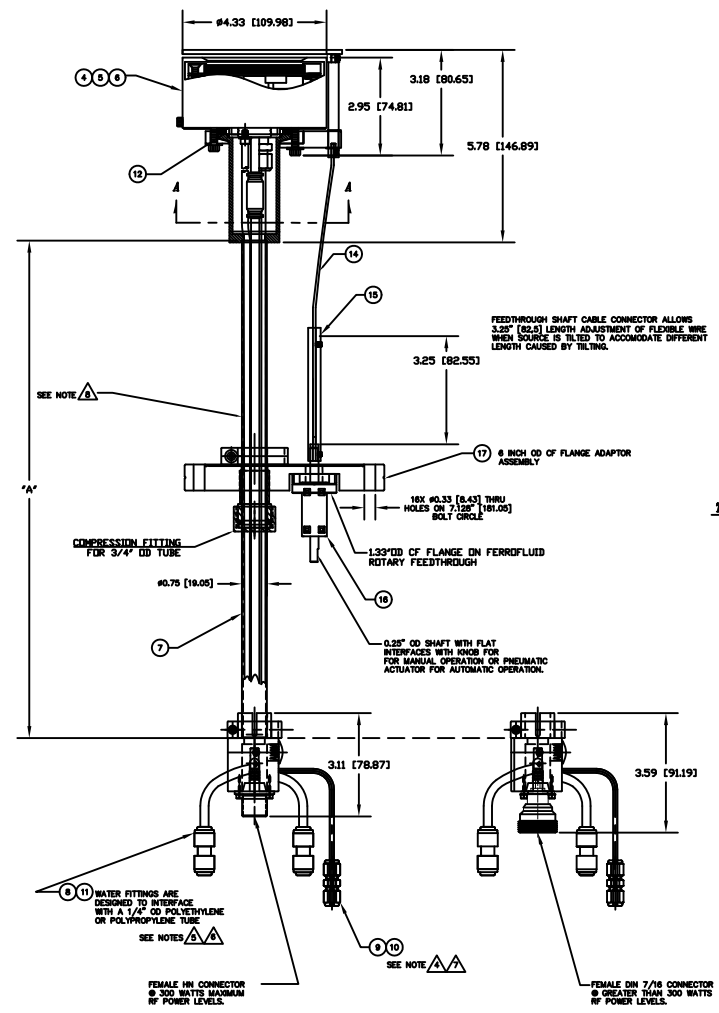


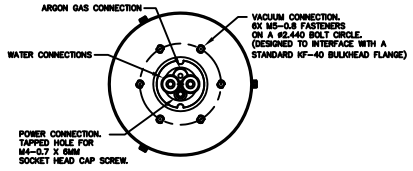
REV	DESCRIPTION	DATE	APPROVED
INITIAL RELEASE		180916	

- NOTES: UNLESS OTHERWISE SPECIFIED
- INTERPRET DRAWING IAW THE GLOBAL PROFESSIONAL PUBLICATIONS "DRAWING REQUIREMENTS MANUAL", EIGHTH EDITION.
 - INTERPRET DIMENSIONS AND TOLERANCES IAW ANSI Y14.5M - 1982.
 - INTERPRET ABBREVIATIONS IAW MIL-STD-12.
 - GAS FITTING (INCLUDED), SWAGelok (ITEM 9) IS AVAILABLE FROM: HTTP://WWW.SWAGELOK.COM**
 - MINIMUM 60" LONG POLYETHYLENE LINES REQUIRED FOR SAFE OPERATION. USER MUST SUPPLY ADDITIONAL 42" LONG POLYETHYLENE WATER LINES TO MEET THIS REQUIREMENT. DO NOT SUBSTITUTE METAL WATER FITTINGS FOR ITEM 8.**
 - WATER LINE CONNECTORS (INCLUDED, ITEM 8) ARE AVAILABLE FROM: HTTP://WWW.JOHNQUEST.COM**
 - MINIMUM 36" LONG TEFLON PFA LINE REQUIRED (36" INCLUDED WITH SOURCE) FOR SAFE OPERATION. DO NOT USE METAL GAS LINES TO MEET THIS REQUIREMENT - ELECTRICAL ISOLATION IS NECESSARY.**
 - TAKE CARE NOT TO DING, SCRATCH OR GOUGE POLISHED SURFACE.**
 - SEE MATERIALS SCIENCE, INC. DOCUMENT NO. 251011 FOR PROPER INSTALLATION, OPERATION AND USE OF POLARIS SPUTTERING SOURCES.
 - MASS OF SPUTTERING SOURCE ASSEMBLY FULLY ASSEMBLED IS 16 LBS., DRY.



-1, -2, AND -3 ASSY SHOWN

DASH NO	Dim "A"
-1	12"
-2	18"
-3	24"



INSTALLATION CONTROL DRAWING

QTY	PART OR IDENTIFYING NO.	NOMENCLATURE OR DESCRIPTION	MATERIAL SPECIFICATION	ZONE	ITEM NO
1	00002931	6" OD OF FLANGE ADAPTOR ASSEMBLY	304 CRES		18
1	00002362	FEEDTHROUGH, ROTARY, FERROFLUID SEAL			17
1	00002133	FEEDTHROUGH SHAFT CABLE CONNECTOR	304 CRES		15
1	00002134	FLEXIBLE CABLE ASSEMBLY	304 CRES		14
1	00002381	SHUTTER ASSEMBLY, 3 INCH POLARIS	304 CRES		13
3	0000100-3	CENTERING RING, KF-40			12
1	00000074-1	TUBING, 1/4" OD X .170" ID X 18"	POLYETHYLENE		11
1	00000038-1	TUBING, 1/8" OD X 1/16" ID X 36" MINIMUM	TEFLON PFA		10
1	00000316	FITTING, SWAGelok, SS-200-6	316 CRES		9
2	0000281-1	1/4 INCH OD COUPLING, QUICK CONNECT	P/N C1040BW		8
1	00000789	3/4 INCH TUBE FEEDTHROUGH ASSEMBLY	304 CRES		7
1	00002085-3	3 INCH INTERNAL CATHODE (CLAMPED TARGET)			6
1	00002085-2	3 INCH INT CATHODE (DIRECT WATER COOLED TGT)			5
1	00002085-1	3 INCH INTERNAL CATHODE (BONDED TARGET)			4
	00002928-3	3" POLARIS SOURCE, VARIABLE HEIGHT & SHUTTER			3
	00002928-2	3" POLARIS SOURCE, VARIABLE HEIGHT & SHUTTER			2
	00002928-1	3" POLARIS SOURCE, VARIABLE HEIGHT & SHUTTER			1

QUANTITY FOR ASSEMBLY	CASE CODE	PART OR IDENTIFYING NO.	NOMENCLATURE OR DESCRIPTION	MATERIAL SPECIFICATION	ZONE	ITEM NO
APPLICATOR			DATE	PARTS LIST		
NEXT ASSEMBLY			USED ON	3" POLARIS, VARIABLE POSITION WITH SHUTTER - 6" CF FLANGE		
APPLICATION			DO NOT SCALE DRAWING	DATE: 1/1		