

REV	DATE	DESCRIPTION	BY	APP'D
1		INITIAL RELEASE	170814	

NOTES: UNLESS OTHERWISE SPECIFIED

1. INTERPRET DRAWING IAW THE GLOBAL PROFESSIONAL PUBLICATIONS "DRAWING REQUIREMENTS MANUAL", EIGHTH EDITION.
2. INTERPRET DIMENSIONS AND TOLERANCES IAW ANSI Y14.5M - 1982.
3. INTERPRET ABBREVIATIONS IAW MIL-STD-12.

4. METRIC DIMENSIONS NOTED IN BRACKETS "E J".

△ TOP AND SIDE GROUND SHIELDS ARE FABRICATED FROM 304 CRES.

⚠ WARNING:
WATER FITTINGS HAVE A CLEAR ID OF .375 (1/2" OD) OR .50 (3/4" OD) INCHES. USING A SLEEVE OR SIMILAR DEVICE INSIDE THE WATER HOSE MAY CAUSE FLUID RESTRICTIONS AND INTERFERENCE WITH THE NORMAL OPERATION OF THE CATHODE AND THEREFORE IS NOT RECOMMENDED.

△ WATER CHANNELS ARE SYMMETRICAL THROUGHOUT. ORIENTATION OF WATER INLET OR OUTLET IS NOT CRITICAL.

⚠ WARNING:
MINIMUM HOSE LENGTH OF 60" IS REQUIRED TO ENSURE RESISTIVITY RELATIVE TO ELECTRICAL GROUND WITHIN 50 KILO OHMS.
TEST CABLE WITH AN OHM METER OR OTHER SUITABLE DEVICE BEFORE USE.

△ MULTI-CONTACT-USA:
2560 SKYLINE BLVD.
SANTA ROSA, CA 95403
VOICE: (707) 575-7575
FAX: (707) 575-7373
INTERNET:
www.multi-contact-usa.com

10. FOR PROPER INSTALLATION, OPERATION, AND USE OF THE SUNSOURCE PLANAR MAGNETRON CATHODE(S), SEE MATERIALS SCIENCE, INC. DOCUMENT NUMBER 251091.

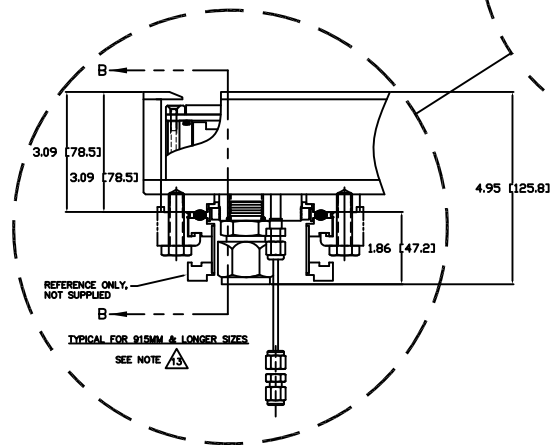
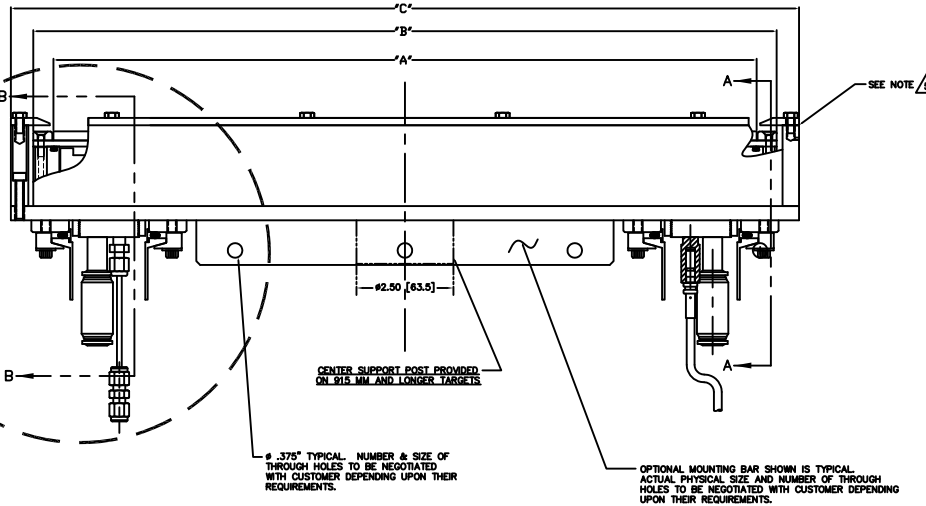
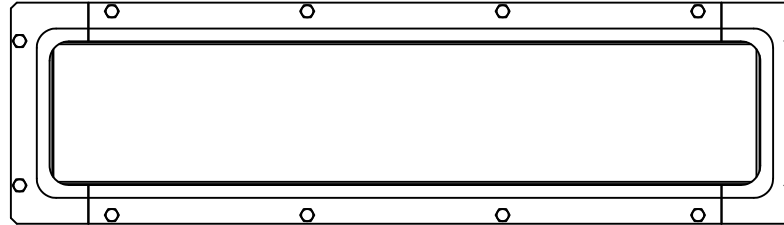
△ P/N 88040-08 IS AVAILABLE FROM:
ALPHA TECHNOLOGIES
320 PREMIER COURT, SUITE 222
FRANKLIN, TN 37087
TEL: (615) 771-8650
HTTP://WWW.ALPHAFITTINGS.COM

△ P/N A100-12-10 IS AVAILABLE FROM:
LENZ, INC.
1301 KLEPPINGER ROAD
DAYTON, OH 45408-1842
TEL: (937) 277-8518
HTTP://WWW.LENZINC.COM

13. ALL FASTENERS ARE METRIC.

△ ADD .100 [2.54] WHEN CLAMPED TARGETS ARE USED. A TALLER SET OF SIDE WING/GROUND SHIELDS ARE REQUIRED TO MAINTAIN THE PROPER DARK SPACE GAP WHEN CLAMPED TARGETS ARE USED. BONDED AND DIRECTLY WATER COOLED TARGETS USE THE STANDARD SIDE SHIELDS SHOWN AND DIMENSIONED.

15. TARGET UTILIZATION IS HIGHEST FOR BONDED & CLAMPED TARGETS. DIRECTLY WATER COOLED TARGETS MUST BE SLIGHTLY LONGER & WIDER - THIS EXTRA AREA IS NOT SPATTERED. THEREFORE TARGET UTILIZATION IS LOWER - BY DEFINITION.



TARGET LENGTH	"A" DIMENSION	"B" DIMENSION	"C" DIMENSION
380MM	14.961 [380]	15.962 [405,4]	17.161 [435,9]
500MM	19.685 [500]	20.686 [525,4]	21.885 [555,9]
915MM	38.024 [915]	37.025 [940,4]	38.224 [970,9]
1500MM	59.055 [1500]	60.056 [1525,4]	61.255 [1555,9]
2000MM	78.740 [2000]	79.741 [2025,4]	80.940 [2055,9]

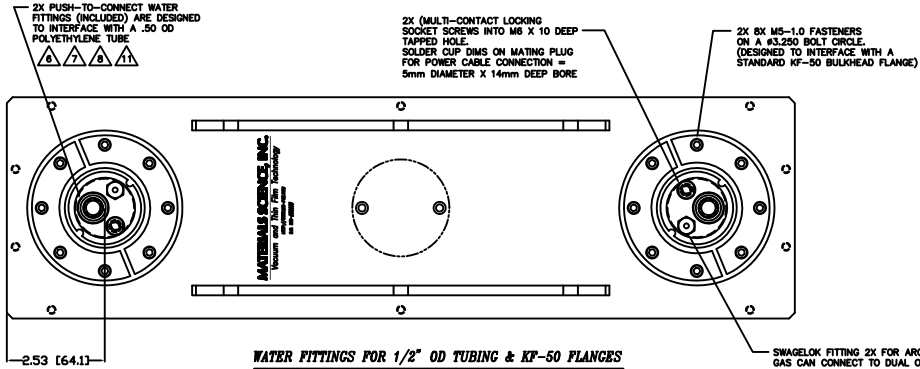
- NOTES:
A. TARGET DIMENSIONS NOTED IN TABLE ARE FOR COMMON SIZES.
B. OTHER TARGET LENGTHS CAN BE ACCOMMODATED.
C. LINEAR DIMENSIONS IN TABLE SCALE EXACTLY.

INSTALLATION CONTROL DRAWING

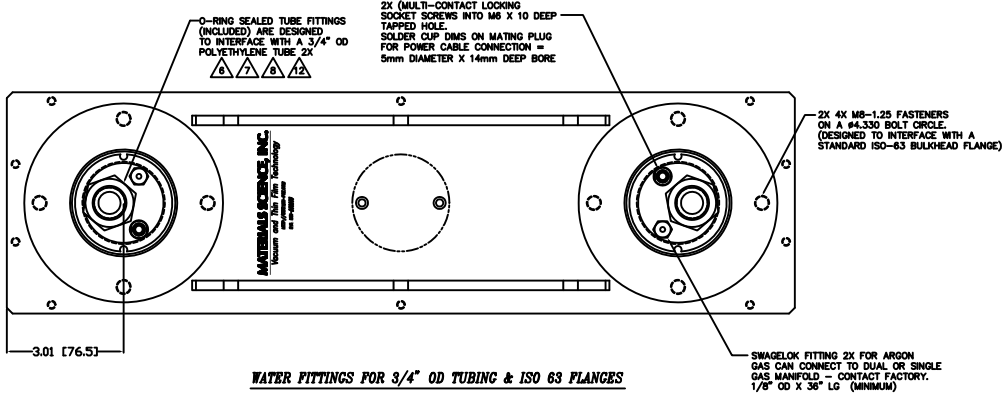
QUANTITY PER ASSEMBLY	CAGE CODE	PART OR IDENTIFYING NO.	NOMENCLATURE OR DESCRIPTION	MATERIAL SPECIFICATION	ZONE	ITEM NO
			PARTS LIST			
			DATE: 1/1/14 BY: J.MILLER			
			MATERIALS SCIENCE, INC. Vacuum and Thin Film Technology			
			SUNSOURCE, 90 MM WIDE, INT. MOUNT, LONG, INSERT STYLE			
			REV: E	DATE: 1/1/14	ITEM NO: 00002980	REV: -
			APPLICATION	USED ON	DO NOT SCALE DRAWING	SCALE: 1/1

WATER FITTINGS FOR 3/4" OD TUBING & ISO 63 FLANGES

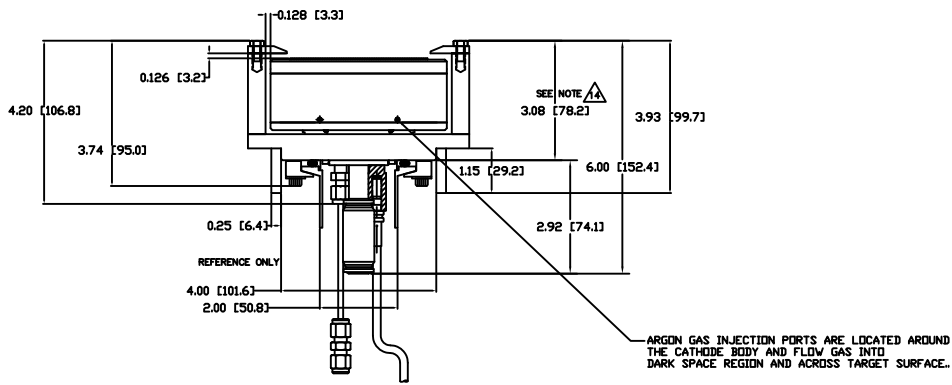
00002980



WATER FITTINGS FOR 1/2" OD TUBING & KF-50 FLANGES



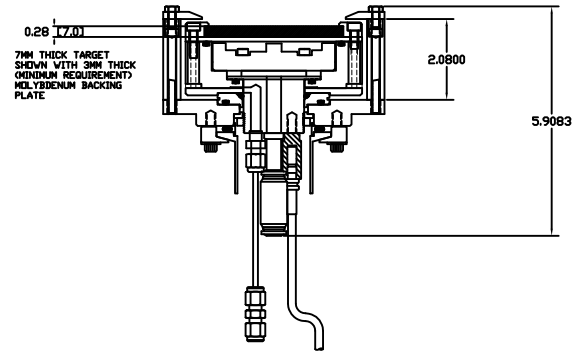
WATER FITTINGS FOR 3/4" OD TUBING & ISO 63 FLANGES



**BONDED TARGET ASSEMBLY WITH KF-50 FLANGES & 1/2" OD WATER FITTINGS SHOWN
(SEE SHEET 1 FOR ISO-63 FLANGES & 3/4" OD WATER FITTINGS)**

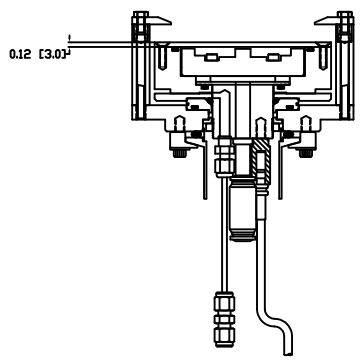
SECTION A-A

00002980



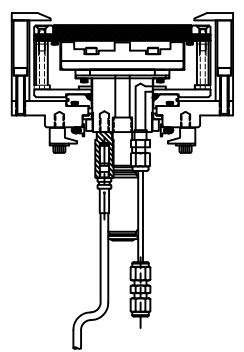
TARGET CLAMPED TO "SEMI-PERMANENT" BACKING PLATE

NOTE: THIS STYLE CATHODE BODY IS DIFFERENT. IT HAS TAPPED HOLES TO RETAIN SEMI-PERMANENT MEMBRANE (BACKING PLATE) SO CLAMPED TARGETS CAN BE EXCHANGED WITHOUT BREAKING THE WATER TO VACUUM SEAL. HOLES WITH THREADED T-INSERTS ARE USED TO RETAIN THE TARGETS AS SHOWN IN THE OTHER VIEWS.



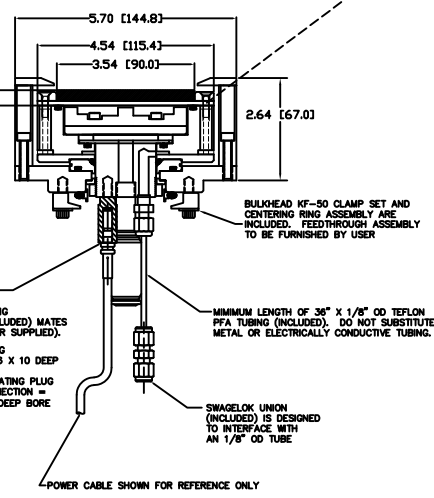
"SEMI-PERMANENT" BACKING PLATE SHOWN WITH TARGET AND CLAMPING BARS REMOVED

SECTION B-B



DIRECT WATER COOLED TARGET SHOWN

SECTION B-B



BONDED TARGET ASSEMBLY SHOWN

SECTION B-B