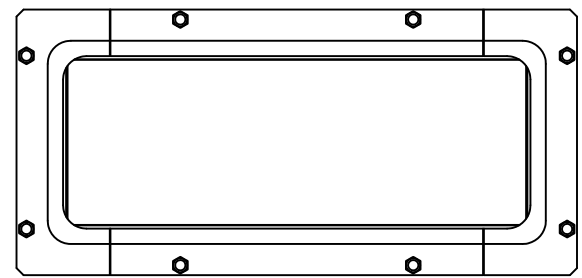
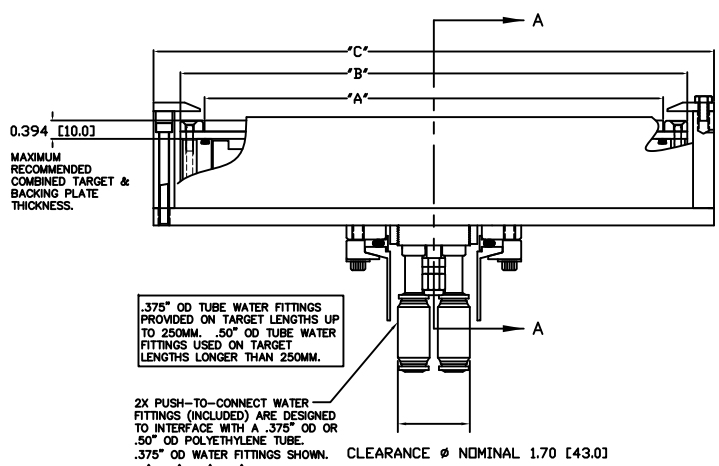


REVISION			
NO.	REV.	DESCRIPTION	DATE
1	INITIAL RELEASE	180126	

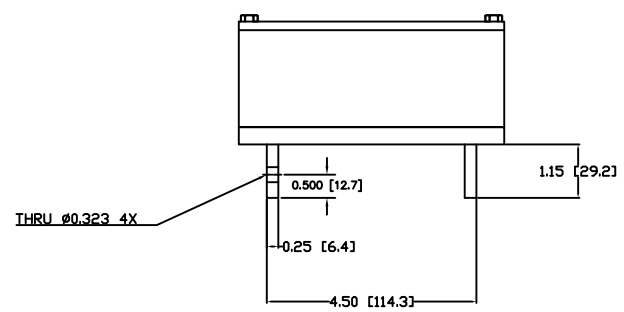
- NOTES: UNLESS OTHERWISE SPECIFIED
- INTERPRET DRAWING IAW THE GLOBAL PROFESSIONAL PUBLICATIONS "DRAWING REQUIREMENTS MANUAL", EIGHTH EDITION.
 - INTERPRET DIMENSIONS AND TOLERANCES IAW ANSI Y14.5M - 1982.
 - INTERPRET ABBREVIATIONS IAW MIL-STD-12.
- 4** WARNING:
WATER FITTINGS ON SOURCES WITH TARGET LENGTHS THROUGH 250MM HAVE A CLEAR ID OF .25 INCHES. LONGER TARGET LENGTHS HAVE A CLEAR ID OF .375 INCHES. USING A SLEEVE OR SIMILAR DEVICE INSIDE THE WATER TUBE MAY CAUSE FLOW RESTRICTIONS AND INTERFERENCE WITH THE NORMAL OPERATION OF THE CATHODE AND THEREFORE IS NOT RECOMMENDED.
- 5** WATER CHANNELS ARE SYMMETRICAL THROUGHOUT. ORIENTATION OF WATER INLET OR OUTLET IS NOT CRITICAL.
- 6** WARNING:
MINIMUM HOSE LENGTH OF 60" IS REQUIRED TO ENSURE RESISTIVITY RELATIVE TO ELECTRICAL GROUND WITHIN 50 KILO OHMS. TEST CABLE WITH AN OHM METER OR OTHER SUITABLE DEVICE BEFORE USE.
- 7** MULTI-CONTACT-USA:
5560 SKYLANE BLVD.
SANTA ROSA, CA 95403
VOICE: (707) 575-7575
FAX: (707) 575-7373
INTERNET:
WWW.MULTI-CONTACT-USA.COM
- 8** FOR PROPER INSTALLATION, OPERATION, AND USE OF THE SUNSOURCE PLANAR MAGNETRON CATHODE(S), SEE MATERIALS SCIENCE, INC. DOCUMENT NUMBER 251091.
- 9** P/N 88040-06 IS AVAILABLE FROM:
ALPHA TECHNOLOGIES
320 PREMIER COURT, SUITE 222
FRANKLIN, TN 37067
TEL: (615) 771-6650
HTTP://WWW.ALPHAFITTINGS.COM
- ALL FASTENERS ARE METRIC.
 - DIMENSIONS IN BRACKETS "[]" DENOTE REFERENCE DIMENSIONS IN MILLIMETERS.
 - TARGET UTILIZATION IS HIGHEST FOR BONDED & CLAMPED TARGETS. DIRECTLY WATER COOLED TARGETS MUST BE SLIGHTLY LONGER & WIDER - THIS EXTRA AREA IS NOT SPUTTERED. THEREFORE TARGET UTILIZATION IS LOWER - BY DEFINITION.
 - ADD .100 [2.54] WHEN CLAMPED TARGETS ARE USED. A TALLER SET OF SIDE ANODE/GROUND SHIELDS ARE REQUIRED TO MAINTAIN THE PROPER DARK SPACE GAP WHEN CLAMPED TARGETS ARE USED. BONDED AND DIRECTLY WATER COOLED TARGETS USE THE STANDARD SIDE SHIELDS SHOWN AND DIMENSIONED.



TOP VIEW



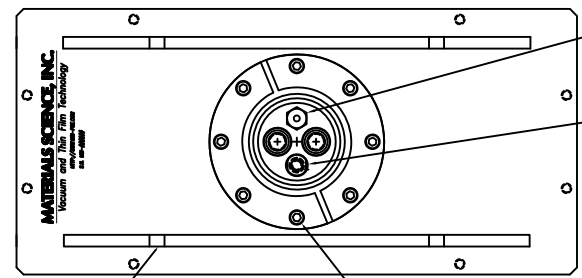
BONDED TARGET ASSEMBLY SHOWN



MOUNTING BARS DETAIL

TARGET LENGTH	"A" DIMENSION	"B" DIMENSION	"C" DIMENSION
200MM	7.874 [200]	8.914 [224.4]	10.064 [255.6]
250MM	9.843 [250]	10.880 [276.4]	12.030 [305.6]
381MM	15.000 [381]	15.900 [403.9]	17.187 [436.6]
400MM	15.748 [400]	16.749 [425.4]	17.935 [455.6]
500MM	19.685 [500]	20.686 [525.4]	21.872 [555.6]

- NOTES:
- TARGET DIMENSIONS NOTED IN TABLE ARE FOR COMMON SIZES.
 - OTHER TARGET LENGTHS CAN BE ACCOMMODATED.
 - LINEAR DIMENSIONS IN TABLE SCALE EXACTLY.



BOTTOM VIEW

MOUNTING HOLES: THROUGH HOLES. NUMBER AND LOCATION AS REQUIRED

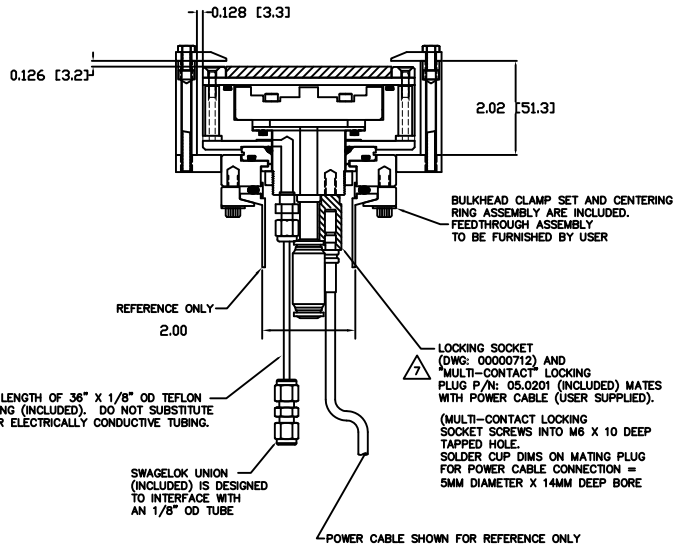
8X M6-1.0 FASTENERS ON A Ø3.250 BOLT CIRCLE (DESIGNED TO INTERFACE WITH A STANDARD KF-50 BULKHEAD FLANGE)

- SWAGelok FITTING FOR ARGON GAS CONNECTS TO 1/8" OD X 36" LG (MINIMUM) TEFLON PFA TUBING
- (MULTI-CONTACT LOCKING SOCKET SCREWS INTO M6 X 10 DEEP TAPPED HOLE. SOLDER CUP DIMS ON MATING PLUG FOR POWER CABLE CONNECTION = 5mm DIAMETER X 14mm DEEP BORE

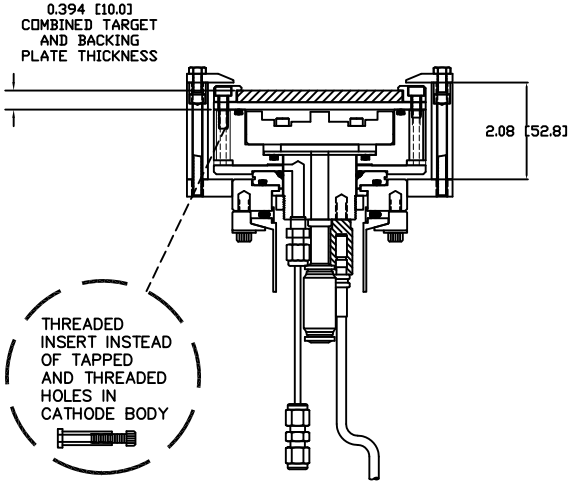
INSTALLATION CONTROL DRAWING

QUANTITY FOR ASSEMBLY	CAGE CODE	PART OR IDENTIFYING NO.	NOMENCLATURE OR DESCRIPTION	MATERIAL SPECIFICATION	ZONE	ITEM NO
			PARTS LIST			
			DATE: J. MILLER 10/01/20			
			MATERIALS SCIENCE, INC. Vacuum and Thin Film Technology			
			SUNSOURCE, 90M WIDE, INTERNAL INSERT STYLE, 1 FEEDTHRU			
			DATE: 00002988			
			APPLICATION			

00002988

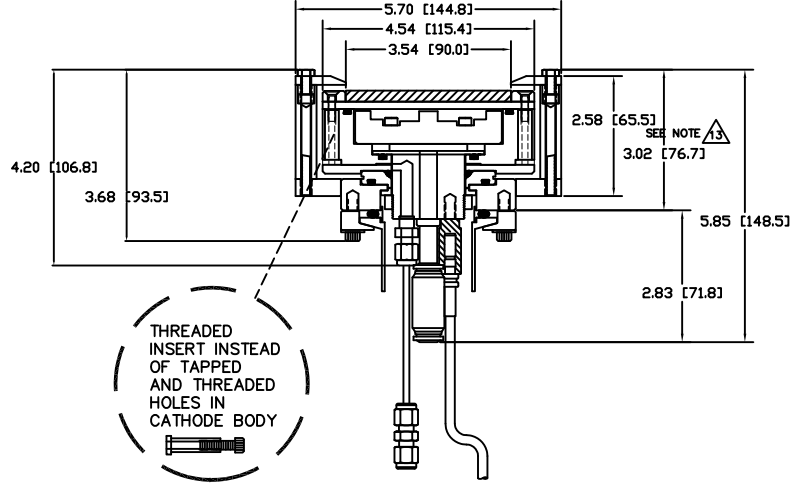


STANDARD BONDED TARGET SHOWN

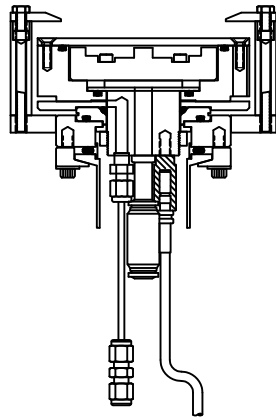


TARGET CLAMPED TO "SEMI-PERMANENT" BACKING PLATE

SECTION A-A

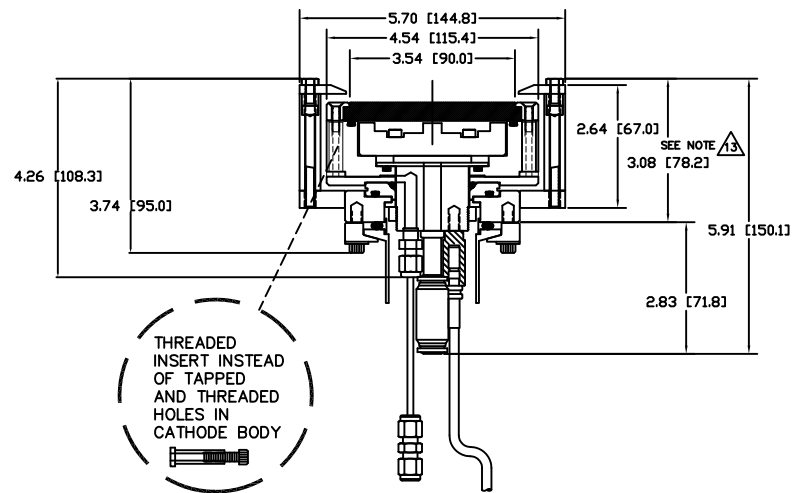
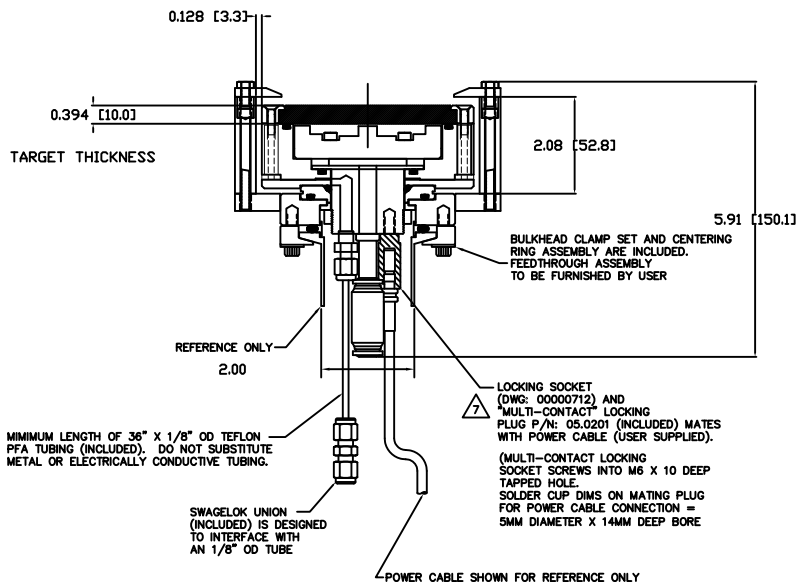


STANDARD BONDED TARGET SHOWN

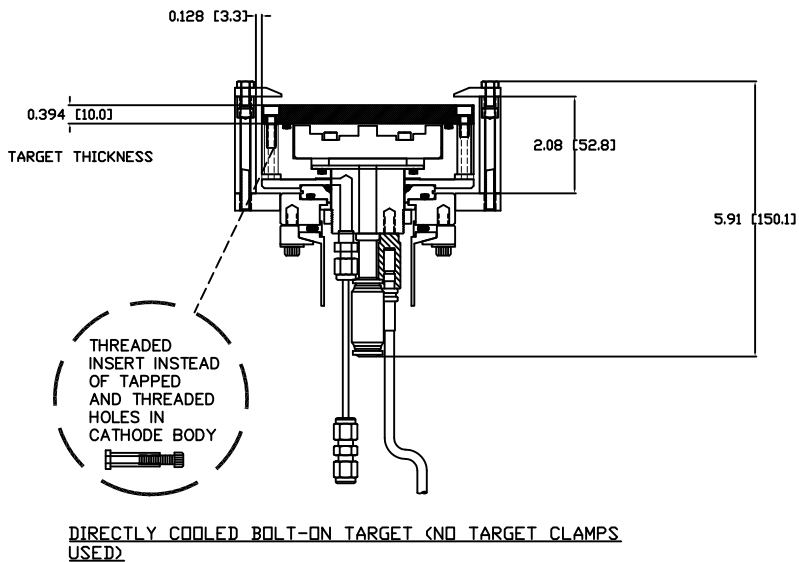


"SEMI-PERMANENT" BACKING PLATE SHOWN WITH TARGET AND CLAMPING BARS REMOVED

SECTION A-A

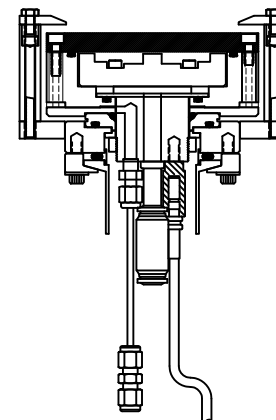


DIRECTLY COOLED STEPPED TARGET



SECTION A-A

DIRECTLY COOLED STEPPED TARGET



DIRECTLY COOLED BOLT-ON TARGET (NO TARGET CLAMPS USED)

SECTION A-A