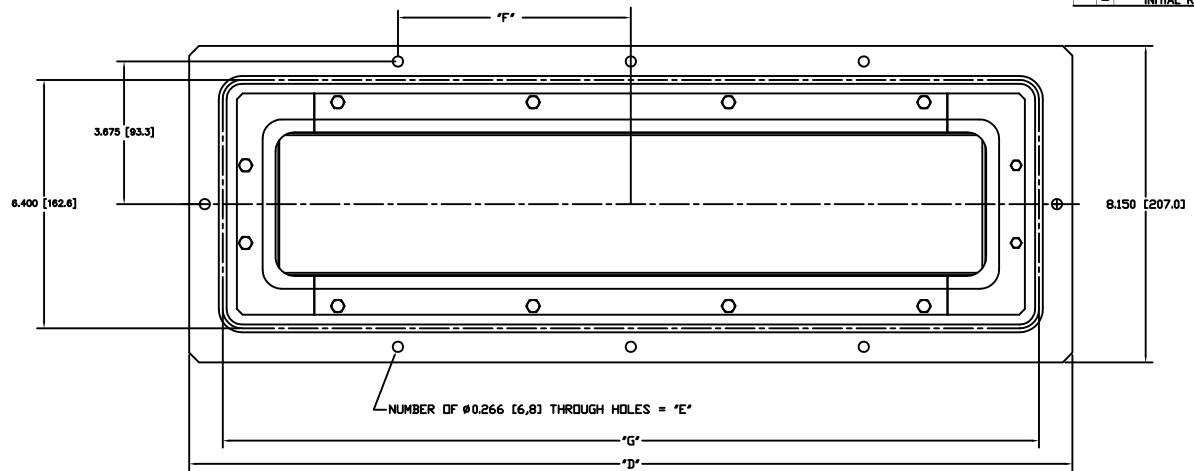


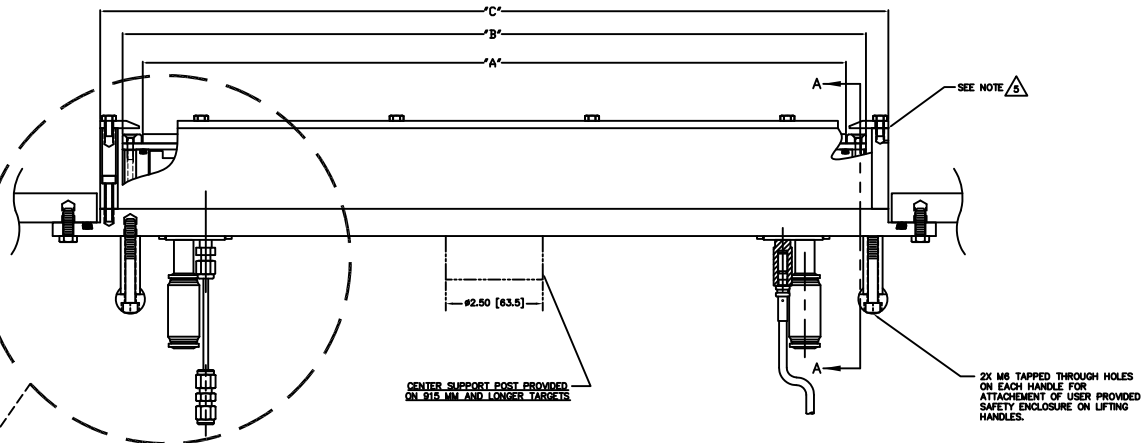
REV	DATE	DESCRIPTION	BY	APP'D
INITIAL RELEASE	180620			

NOTES: UNLESS OTHERWISE SPECIFIED

- INTERPRET DRAWING IAW THE GLOBAL PROFESSIONAL PUBLICATIONS "DRAWING REQUIREMENTS MANUAL", EIGHTH EDITION.
- INTERPRET DIMENSIONS AND TOLERANCES IAW ANSI Y14.5M - 1982.
- INTERPRET ABBREVIATIONS IAW MIL-STD-112.
- METRIC DIMENSIONS NOTED IN BRACKETS "E".
- TOP AND SIDE GROUND SHIELDS ARE FABRICATED FROM 304 CRES.
- WARNING: WATER FITTINGS HAVE A CLEAR ID OF .375 (1/8" OD) OR .50 (3/4" OD) INCHES. USING A SLEEVE OR SIMILAR DEVICE INSIDE THE WATER HOSE MAY CAUSE FLUID RESTRICTIONS AND INTERFERENCE WITH THE NORMAL OPERATION OF THE CATHODE AND THEREFORE IS NOT RECOMMENDED.
- WATER CHANNELS ARE SYMMETRICAL THROUGHOUT. ORIENTATION OF WATER INLET OR OUTLET IS NOT CRITICAL.
- WARNING: MINIMUM HOSE LENGTH OF 60" IS REQUIRED TO ENSURE RESISTIVITY RELATIVE TO ELECTRICAL GROUND WITHIN 50 KILO OHMS. TEST CABLE WITH AN OHM METER OR OTHER SUITABLE DEVICE BEFORE USE.
- MULTI-CONTACT-USA: 2500 SKYLINE BLVD. SANTA ROSA, CA 95403. VOICE: (707) 575-7575. FAX: (707) 575-7373. INTERNET: WWW.MULTI-CONTACT-USA.COM
- FOR PROPER INSTALLATION, OPERATION, AND USE OF THE SUNSOURCE PLANAR MAGNETRON CATHODE(S), SEE MATERIALS SCIENCE, INC. DOCUMENT NUMBER 251091.
- P/N 88040-08 IS AVAILABLE FROM: ALPHA TECHNOLOGIES, 320 PREMIER COURT, SUITE 222, FRANKLIN, TN 37067, TEL: (615) 771-8850, HTTP://WWW.ALPHAFITTINGS.COM
- P/N A100-12-10 IS AVAILABLE FROM: LENZ, INC., 1301 KLEPPINGER ROAD, DAYTON, OH 45408-1842, TEL: (937) 277-8516, HTTP://WWW.LENZINC.COM
- ALL FASTENERS ARE METRIC.
- ADD .100 [2.54] WHEN CLAMPED TARGETS ARE USED. A TALLER SET OF SIDE WARD/GROUND SHIELDS ARE REQUIRED TO MAINTAIN THE PROPER DARK SPACE GAP WHEN CLAMPED TARGETS ARE USED. BONDED AND DIRECTLY WATER COOLED TARGETS USE THE STANDARD SIDE SHIELDS SHOWN AND DIMENSIONED.
- TARGET UTILIZATION IS HIGHEST FOR BONDED & CLAMPED TARGETS. DIRECTLY WATER COOLED TARGETS MUST BE SLIGHTLY LONGER & WIDER - THIS EXTRA AREA IS NOT SPOTTED. THEREFORE TARGET UTILIZATION IS LOWER - BY DEFINITION.



VACUUM SIDE



CENTER SUPPORT POST PROVIDED ON 915 MM AND LONGER TARGETS

TARGET LENGTH	"A" DIMENSION	"B" DIMENSION	"C" DIMENSION	"D" DIMENSION
380MM	14.981 [380]	15.982 [405.4]	17.161 [435.9]	19.581 [497.4]
500MM	19.685 [500]	20.686 [525.4]	21.865 [555.9]	24.305 [617.3]
915MM	36.024 [915]	37.025 [940.4]	38.224 [970.9]	40.644 [1032.4]
1500MM	59.055 [1500]	60.056 [1525.4]	61.255 [1555.9]	63.675 [1617.3]
2000MM	78.740 [2000]	79.741 [2025.4]	80.940 [2055.9]	83.360 [2117.3]

TARGET LENGTH	"E" DIMENSION	"F" DIMENSION	"G" DIMENSION	"H" DIMENSION
380MM	8 EACH	6.000 [152.4]	"A"+2.90 [73.7]	"C"+.20 [5.08]
500MM	8 EACH	6.000 [152.4]	"A"+2.90 [73.7]	"C"+.20 [5.08]
915MM	8 EACH	6.000 [152.4]	"A"+2.90 [73.7]	"C"+.20 [5.08]
1500MM	22 EACH	6.000 [152.4]	"A"+2.90 [73.7]	"C"+.20 [5.08]
2000MM	30 EACH	6.000 [152.4]	"A"+2.90 [73.7]	"C"+.20 [5.08]

- NOTES:
- TARGET DIMENSIONS NOTED IN TABLE ARE FOR COMMON SIZES.
 - OTHER TARGET LENGTHS CAN BE ACCOMMODATED.
 - LINEAR DIMENSIONS IN TABLE SCALE EXACTLY.

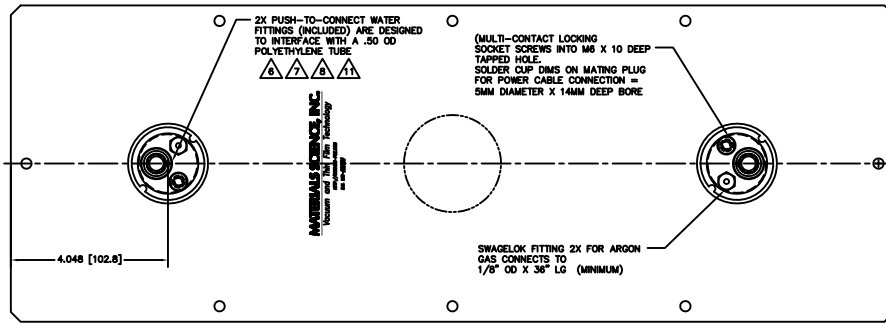
INSTALLATION CONTROL DRAWING

QUANTITY FOR ASSEMBLY	CAGE CODE	PART OR IDENTIFYING NO.	NOMENCLATURE OR DESCRIPTION	MATERIAL SPECIFICATION	ZONE	ITEM NO
			PARTS LIST			
			DATE: 1/18/20 BY: J.MILLER			
			MATERIALS SCIENCE, INC. Vacuum and Hot Film Technology			
			SUNSOURCE, 90 MM WIDE, FLG MOUNT, LONG, INSERT STYLE			
						00002995
						1/1
						3

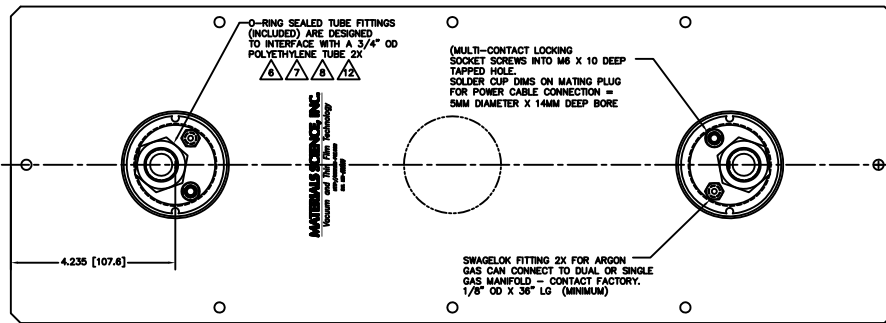
WATER FITTINGS FOR 3/4" OD TUBING & ISO 63 FLANGES

00002995

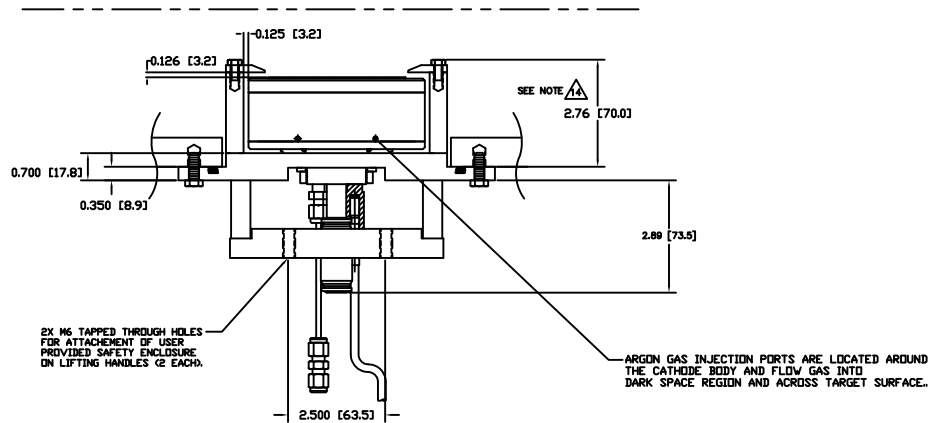
ATMOSPHERE SIDE



WATER FITTINGS FOR 1/2" OD TUBING



WATER FITTINGS FOR 3/4" OD TUBING

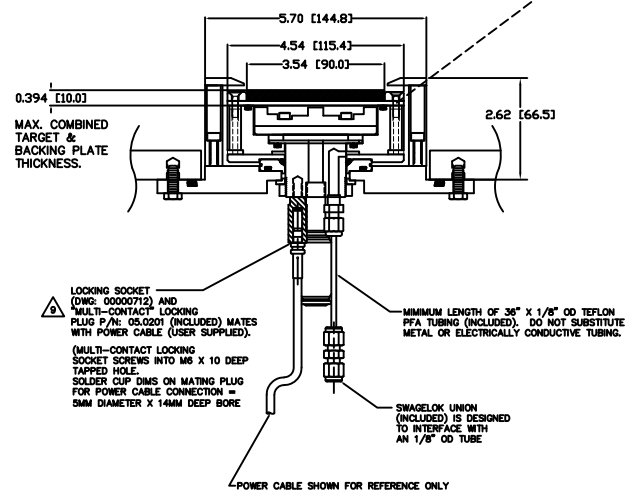
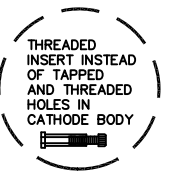


BONDED TARGET ASSEMBLY WITH 1/2" OD WATER FITTINGS SHOWN

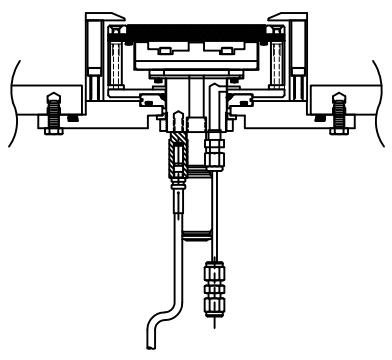
(SEE SHEET 1 FOR 3/4" OD WATER FITTINGS)

SECTION A-A

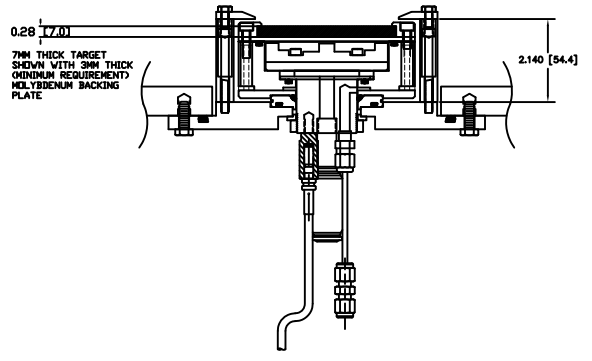
00002995



BONDED TARGET ASSEMBLY SHOWN
SECTION B-B

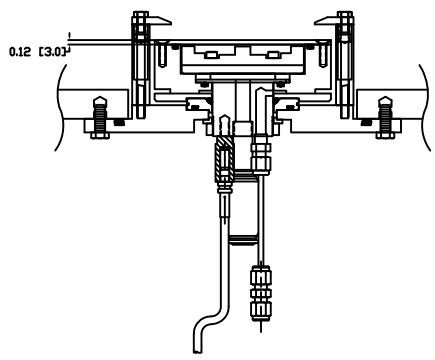


DIRECT WATER COOLED TARGET SHOWN
SECTION B-B



TARGET CLAMPED TO 'SEMI-PERMANENT' BACKING PLATE

NOTE: THIS STYLE CATHODE BODY IS DIFFERENT. IT HAS TAPPED HOLES TO RETAIN SEMI-PERMANENT MEMBRANE (BACKING PLATE) SO CLAMPED TARGETS CAN BE EXCHANGED WITHOUT BREAKING THE WATER TO VACUUM SEAL. HOLES WITH THREADED T-INSERTS ARE USED TO RETAIN THE TARGETS AS SHOWN IN THE OTHER VIEWS.



'SEMI-PERMANENT' BACKING PLATE SHOWN WITH TARGET AND CLAMPING BARS REMOVED
SECTION B-B