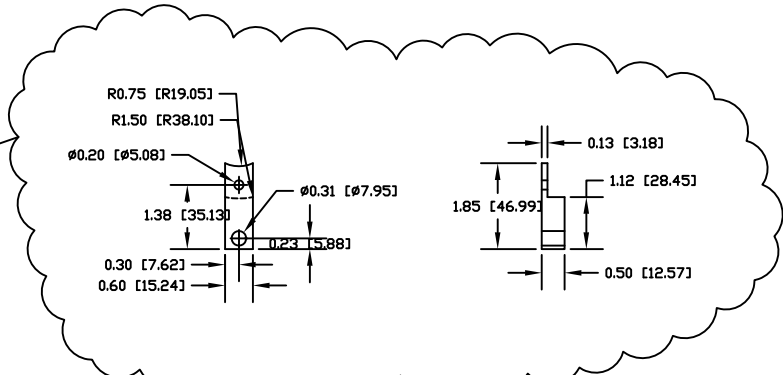
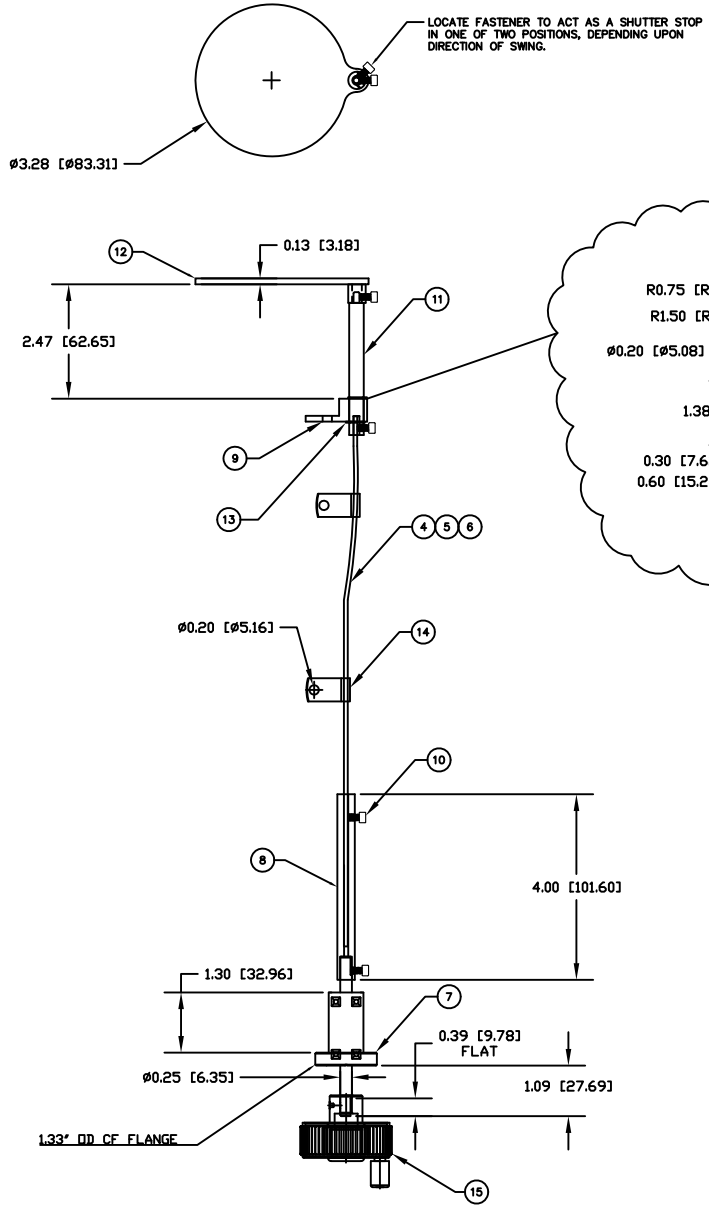


REV	NO	DESCRIPTION	DATE	APPROVED
		INITIAL RELEASE	110702	

NOTES: UNLESS OTHERWISE SPECIFIED

1. INTERPRET DRAWING IAW THE GLOBAL PROFESSIONAL PUBLICATIONS "DRAWING REQUIREMENTS MANUAL", EIGHTH EDITION.
2. INTERPRET DIMENSIONS AND TOLERANCES IAW ANSI Y14.5M - 1982.
3. INTERPRET ABBREVIATIONS IAW MIL-STD-12.



QTY	UNIT	DESCRIPTION	MATERIAL SPECIFICATION	ZONE	ITEM NO.
1	1	00002213	POSITIONING KNOB		16
2	2	00002131	LOOP CLAMP	18-8 CRES	15
2	2	00002211	RETAINING RING, SNAP-TYPE, 5/16" SHAFT	PH 15-7 MO SST	14
1	1	00002250	SHUTTER, 2 INCH POLARIS	304 CRES	12
1	1	00002210	SHUTTER SHAFT, 2 & 3 INCH POLARIS	304 CRES	11
5	5	00000030-60	SOC HD CAP SCREW, .138-32UNC-2A X .250 LG	18-8 CRES	10
1	1	00002251	BRACKET, SHUTTER, 2 INCH POLARIS	304 CRES	9
1	1	00002133	FEEDTHROUGH SHAFT CABLE CONNECTOR	304 CRES	8
1	1	00002362	FEEDTHROUGH, ROTARY, FERROFLUID SEAL		7
1	1	00002134-3	FLEXIBLE SHAFT, 0.125" DIAMETER X 18.75" LONG	304 CRES	6
1	1	00002134-2	FLEXIBLE SHAFT, 0.125" DIAMETER X 16" LONG	304 CRES	5
1	1	00002134-1	FLEXIBLE SHAFT, 0.125" DIAMETER X 13.5" LONG	304 CRES	4
		00002451-3	SHUTTER ASSY, 2 INCH, 1.33 INCH CF FEEDTHRU		3
		00002451-2	SHUTTER ASSY, 2 INCH, 1.33 INCH CF FEEDTHRU		2
		00002451-1	SHUTTER ASSY, 2 INCH, 1.33 INCH CF FEEDTHRU		1

DATE: 11/07/00 DRAWN BY: J. MILLER CHECKED BY: [Signature] APPROVED BY: [Signature]	BAUGHNAN SCIENCE, INC. Vector and Simulation Technology 10000 W. 10th Ave., Suite 100 Broomfield, CO 80020-1000 PHONE: 303.440.8800 FAX: 303.440.8801 WWW: www.baughnanscience.com
PART NO: 00002451 TITLE: SHUTTER ASSEMBLY, 2 INCH, 1.33 INCH CF FEEDTHRU DATE: 1/1/00 SHEET: 1 OF 2	NEXT ASSEMBLY: [Blank] USED ON: [Blank] APPLICATION: [Blank]