

4

3

2

1

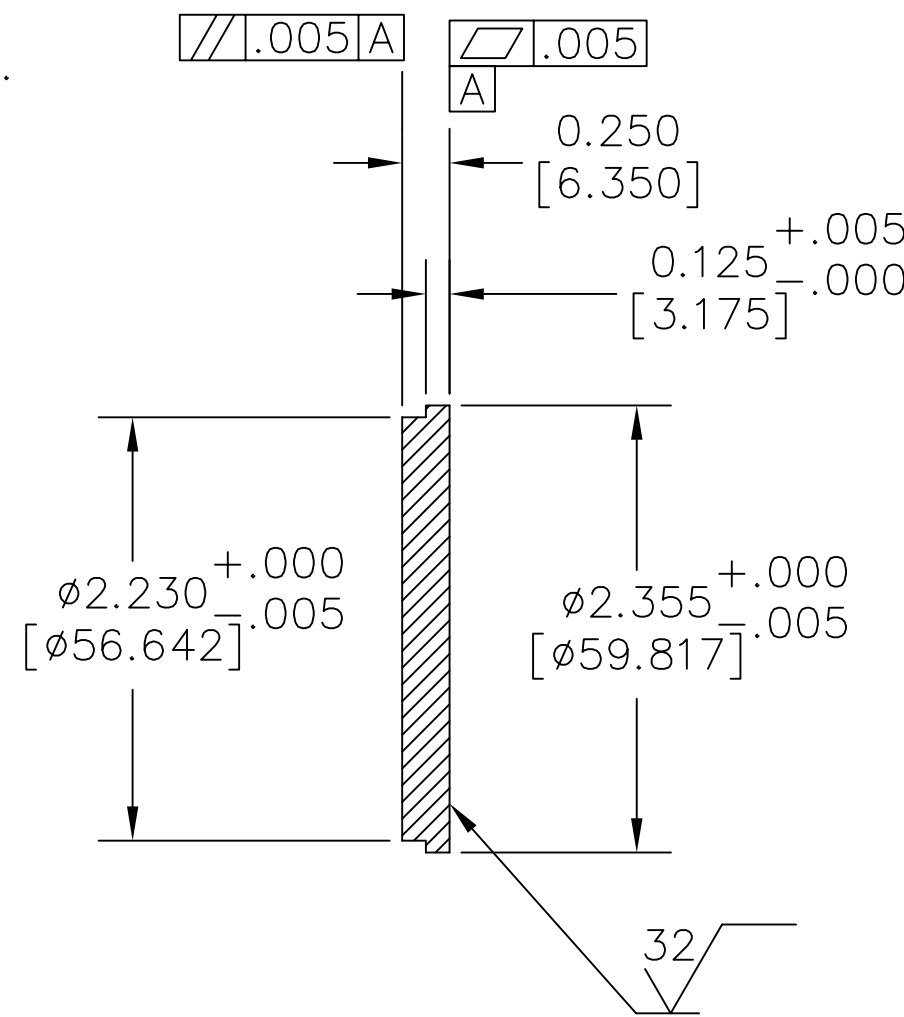
NOTES: UNLESS OTHERWISE SPECIFIED

- 1. INTERPRET DRAWING IAW THE GLOBAL PROFESSIONAL PUBLICATIONS "DRAWING REQUIREMENTS MANUAL", EIGHTH EDITION.
- 2. INTERPRET DIMENSIONS AND TOLERANCES IAW ANSI Y14.5M - 1982.
- 3. REMOVE ALL BURRS, SHARP EDGES, NICKS, AND SCRATCHES.
- 4. INTERPRET ABBREVIATIONS IAW MIL-STD-12.
- 5. DIMENSIONS IN BRACKETS "[]" DENOTE REFERENCE DIMENSIONS IN MILLIMETERS.

6 MATERIAL:
TO BE SPECIFIED BY CUSTOMER PRIOR TO FABRICATION.

- 7. FOR FURTHER FABRICATION REQUIREMENTS, SEE MATERIALS SCIENCE, INC. SPECIFICATION NO. 10000000.

REVISION				
ZONE	REV	DESCRIPTION	DATE	APPROVED
	-	INITIAL RELEASE	970107	



-1 DETAIL

			00000066	2 INCH TARGET, DIRECT WATER COOLED	6		1
		CAGE CODE	PART OR IDENTIFYING NO.	NOMENCLATURE OR DESCRIPTION	MATERIAL SPECIFICATION	ZONE	ITEM NO.

QUANTITY PER ASSEMBLY		PARTS LIST				MATERIALS SCIENCE, INC. Vacuum and Thin Film Technology 166 Lee Hill Road, San Diego, CA 92109				
				UNLESS OTHERWISE SPECIFIED DIMENSIONS ARE IN INCHES TOLERANCES ARE: DECIMALS .X ± .030 .XX ± .010 .XXX ± .005 ANGLES ± 0'30"	DRAWN <i>C. CERVANTES</i>	97/01/07	2 INCH TARGET, DIRECT WATER COOLED			
				MACHINE SURFACES UNLESS OTHERWISE SPECIFIED 125	APPROVAL					
		NEXT ASSEMBLY	USED ON	FINISH	THIS DRAWING CONTAINS PROPRIETARY INFORMATION AND ANY REPRODUCTION, DISCLOSURE OR USE OF THIS DRAWING WITHOUT WRITTEN PERMISSION FROM MATERIAL SCIENCES, INC. IS EXPRESSLY PROHIBITED		SIZE C	CAGE CODE	DWG. NO. 00000066	REV -
APPLICATION		DO NOT SCALE DRAWING		SCALE: 1/1	WT:	DISP:	SHEET: 1 OF 1			

4

3

2

1

REV -
DWG NO. 00000066